

roundtree

real estate



RIVERSIDE DRIVE, GOLDERS GREEN NW11

£1,150,000



3



2



Y

Leasehold



BRITISH
PROPERTY
AWARDS

2022



GOLD WINNER

ESTATE AGENT
IN NW4



BRITISH
PROPERTY
AWARDS

2022 - 2023

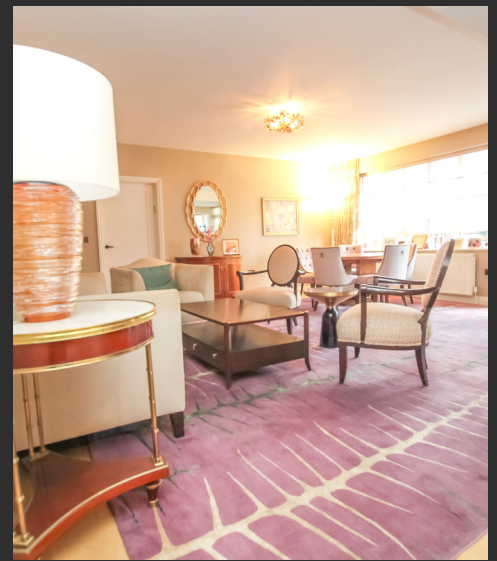


GOLD WINNER

LETTING AGENT
IN NW4

A fresh approach to your property journey...

A bright and deceptively spacious Three double bedroom Two bathroom (One Ensuite) apartment situated in this ever popular purpose built block with walking distance of the tube station, Golders Green shopping facilities and local amenities. Consisting of Spacious living/Dining room with door leading to the private balcony, large kosher kitchen/breakfast room, Principal bedroom with



Three double Bedrooms

Two bathrooms (One
Ensuite)

Spacious living/Dining room

Large Kosher

Kitchen/Breakfast Room

Private Balcony

Principle bedroom with

Walk In Wardrobe

Approximately 1500 SQ FT
of Living Space

Porter

Lift in Block to all floors

Minutes walking distance to

tube station and Golders

Green shopping facilities

Chain Free

Sole Agent



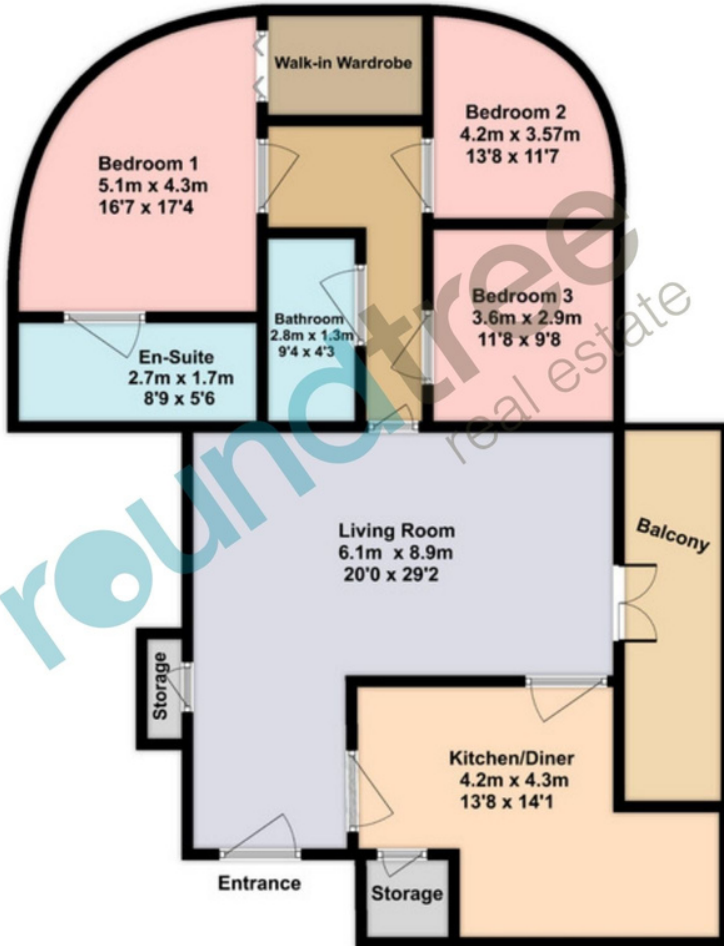


Walk In Wardrobe two further double bedrooms and family bathroom.
The block benefits from having a Porter.
Outside there is off street parking plus communal gardens.
Chain free.
Sole Agents.



RIVERSIDE DRIVE, GOLDERS GREEN NW11

Approximate Area = 1474 sq ft / 137 sq m

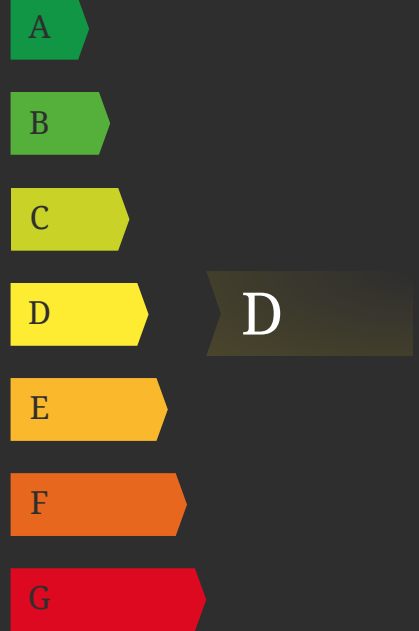


Third Floor

For identification only
Not to scale

sales@theroundtree.com | 020 8203 2111 | www.theroundtree.com

EPC



1 Sentinel Square, Brent Street
Hendon, NW4 2EL

020 8203 21111

mail@theroundtree.com

theroundtree.com

Selling your home?

If you are considering selling your home please contact us today for your no obligation free market appraisal.

Our dedicated and friendly team will assist you.

Get in touch today!



General: While we endeavor to make our sales particulars fair, accurate and reliable, they are only a general guide to the property and, accordingly, if there is any point which is of particular importance to you, please contact the office and we will be pleased to check the position for you, especially if you are contemplating travelling some distance to view the property. Measurements: These approximate room sizes are only intended as general guidance. You must verify the dimensions carefully before ordering carpets or any built-in furniture. Services: Please note we have not tested the services or any of the equipment or appliances in this property, accordingly we strongly advise prospective buyers to commission their own survey or service reports before finalizing their offer to purchase. THESE PARTICULARS ARE ISSUED IN GOOD FAITH BUT DO NOT CONSTITUTE REPRESENTATIONS OF FACT OR FORM PART OF ANY OFFER OR CONTRACT. THE MATTERS REFERRED TO IN THESE PARTICULARS SHOULD BE INDEPENDENTLY VERIFIED BY PROSPECTIVE BUYERS OR TENANTS. NEITHER ROUNDTREE NOR ANY OF ITS EMPLOYEES OR AGENTS HAS ANY AUTHORITY TO MAKE OR GIVE ANY REPRESENTATION OR WARRANTY WHATSOEVER IN RELATION TO THIS PROPERTY.

A fresh approach to your property journey..