



Green Lane, Hendon, NW4

A Bright and spacious four bedroom two bathroom (one ensuite) family home with more than 1650 sq ft over 3 floors situated in one of Hendon's popular streets with walking distance of Hendon Central Tube Station, Hendon Park, Schools, Brent Street shopping facilities, Hendon Park and Brent Cross shopping Centre.

£1,150,000
Freehold

Green Lane, Hendon, NW4

Overview

- FOUR BEDROOMS
- TWO BATHROOMS (ONE ENSUITE)
- LARGE LIVING/ RECEPTION ROOM
- DINING ROOM
- SPACIOUS EAT IN KITCHEN
- GROUND FLOOR CLOAKROOM
- UTILITY ROOM
- SOUTH WEST FACING GARDEN
- WALKING DISTANCE OF PUBLIC TRANSPORT
- CHAIN FREE



Comprising large Living room/reception, Spacious Eat in Kitchen, Dining room and ground floor cloakroom. On the first floor there are 3 bedrooms, Family bathroom plus utility room. On the top floor there is the Principal bedroom with Ensuite Bathroom.

Externally to the rear is the south west facing garden with large patio and Astro turf lawn.

To the front is a large paved driveway providing off street parking for 2 cars plus an electric charging point.

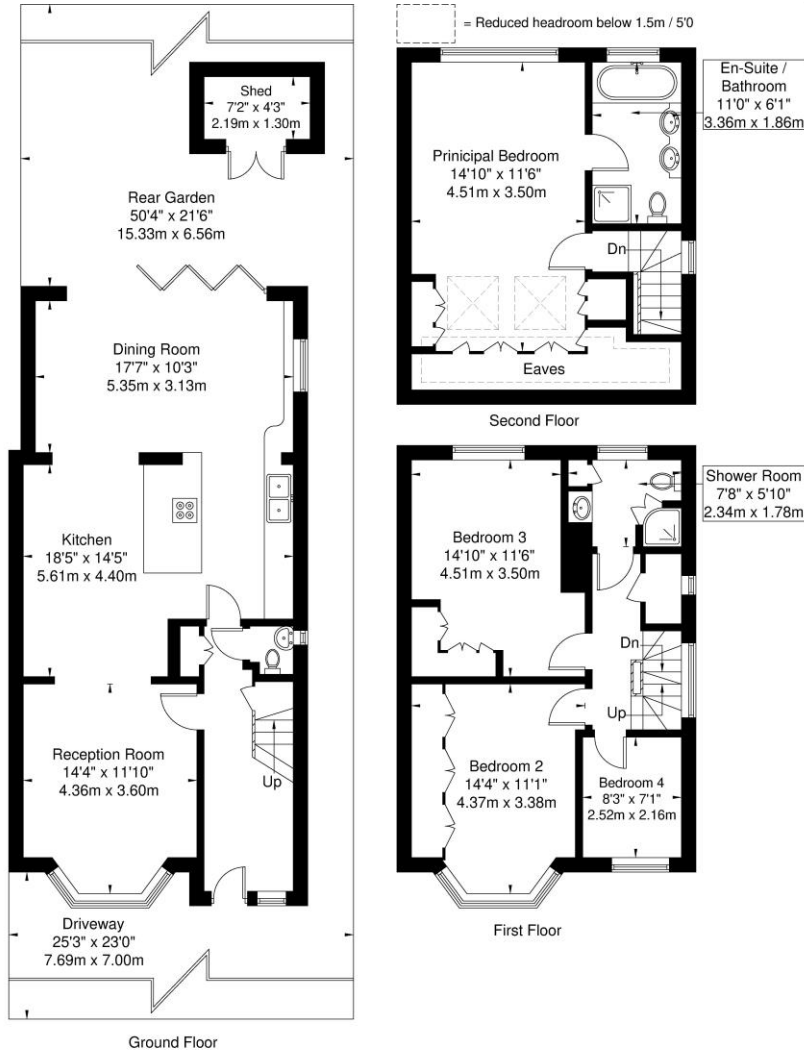
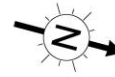
Chain free.





Green Lane, Hendon, NW4 2NL

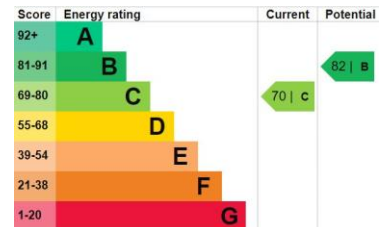
Approx. Gross Internal Area = 153.50 sq m / 1652 sq ft
(Including Restricted Height Area & Eaves)



Ref

Copyright **BLEU PLAN**

The Floor plan is not to scale and measurements and areas shown are approximate and therefore should be used for illustrative purposes only. The plan has been prepared in accordance with the RICS code of Measuring Practice and whilst we have confidence in the information produced it must not be relied on. If there is any aspect of particular importance, you should carry out or commission your own inspection of the property.
Copyright @ BLEUPLAN



Selling your home?

If you are considering selling your home please contact us today for your no obligation free market appraisal.

Our dedicated and friendly team will assist you. Get in touch today!



1 Sentinel Square, Brent Street, Hendon, NW4 2EL

020 8203 2111 • mail@theroundtree.com



www.theroundtree.com

General: While we endeavour to make our sales particulars fair, accurate and reliable, they are only a general guide to the property and, accordingly, if there is any point which is of particular importance to you, please contact the office and we will be pleased to check the position for you, especially if you are contemplating travelling some distance to view the property. Measurements: These approximate room sizes are only intended as general guidance. You must verify the dimensions carefully before ordering carpets or any built-in furniture. Services: Please note we have not tested the services or any of the equipment or appliances in this property, accordingly we strongly advise prospective buyers to commission their own survey or service reports before finalizing their offer to purchase. THESE PARTICULARS ARE ISSUED IN GOOD FAITH BUT DO NOT CONSTITUTE REPRESENTATIONS OF FACT OR FORM PART OF ANY OFFER OR CONTRACT. THE MATTERS REFERRED TO IN THESE PARTICULARS SHOULD BE INDEPENDENTLY VERIFIED BY PROSPECTIVE BUYERS OR TENANTS. NEITHER ROUNDTREE NOR ANY OF ITS EMPLOYEES OR AGENTS HAS ANY AUTHORITY TO MAKE OR GIVE ANY REPRESENTATION OR WARRANTY WHATSOEVER IN RELATION TO THIS PROPERTY.