

roundtree

real estate



Broughton Avenue, Finchley N3

£1,075,000



4



2

Freehold



BRITISH
PROPERTY
AWARDS

2022



GOLD WINNER

ESTATE AGENT
IN NW4



BRITISH
PROPERTY
AWARDS

2022 - 2023



GOLD WINNER

LETTING AGENT
IN NW4

A fresh approach to your property journey...

A beautifully presented extended four bedroom, two bathroom semi detached family home arranged over three floors situated off Hendon Lane and within close proximity to Dollis Valley Greenwalk and Windsor Open Space. The property comprises a large open plan modern kitchen breakfast dining room with bifold doors to rear garden, reception room and ground floor WC.



Four bedrooms

Two bathrooms

Modern open plan kitchen
dining family room

Reception room

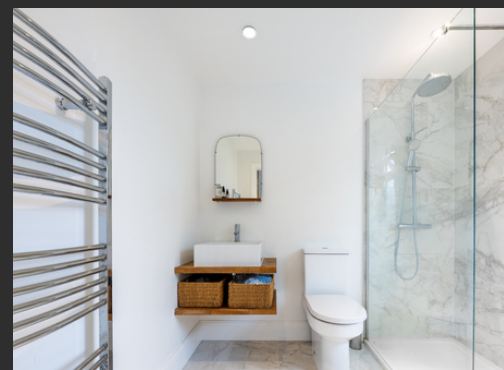
Ground floor WC

Tandem length garage

West facing garden

Chain free





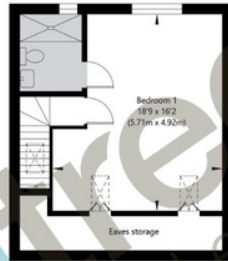
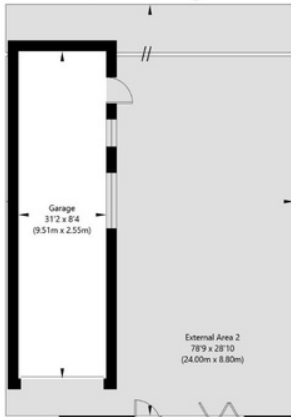
On the first floor there are 3 bedrooms and a modern bathroom suite. The top floor boasts a master bedroom with en-suite shower room. Externally there is a tandem length garage and west facing rear garden. Finchley Central underground and its shopping amenities are also with reach. Chain free



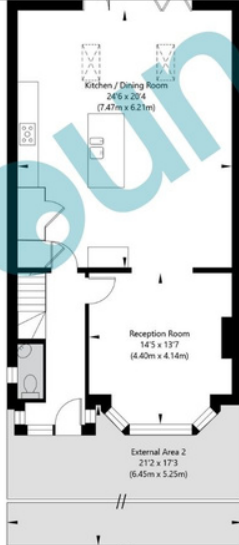
Floorplan

roundtree
real estate

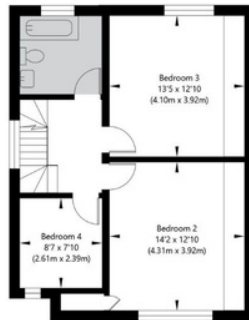
Broughton Avenue, Finchley, London, N3 3ES



Loft
GROSS INTERNAL FLOOR AREA
APPROX. 32.9 SQ M / 354 SQ FT



Ground Floor
GROSS INTERNAL FLOOR AREA
APPROX. 73.02 SQ M / 786 SQ FT



First Floor
GROSS INTERNAL FLOOR AREA
APPROX. 54.98 SQ M / 592 SQ FT

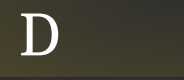
APPROXIMATE GROSS INTERNAL FLOOR AREA INCLUDING OUTBUILDING 185.15 SQ M / 1993 SQ FT
THIS FLOOR PLAN IS FOR ILLUSTRATIVE PURPOSES ONLY AND
SHOULD BE USED FOR THIS PURPOSE BY PROSPECTIVE APPLICANTS AS ITS NOT TO SCALE.

(C) AMBERSHORE PIX LIMITED / PHOTO - VIDEO - FLOOR PLANS / 0800 999 1577 / WWW.AMBERSHOREPIX.CO.UK

sales@theroundtree.com | 020 8203 2111 | www.theroundtree.com



EPC



1 Sentinel Square, Brent Street
Hendon, NW4 2EL

020 8203 21111

mail@theroundtree.com

theroundtree.com

Selling your home?

If you are considering selling your home please contact us today for your no obligation free market appraisal.

Our dedicated and friendly team will assist you.

Get in touch today!



General: While we endeavor to make our sales particulars fair, accurate and reliable, they are only a general guide to the property and, accordingly, if there is any point which is of particular importance to you, please contact the office and we will be pleased to check the position for you, especially if you are contemplating travelling some distance to view the property. Measurements: These approximate room sizes are only intended as general guidance. You must verify the dimensions carefully before ordering carpets or any built-in furniture. Services: Please note we have not tested the services or any of the equipment or appliances in this property, accordingly we strongly advise prospective buyers to commission their own survey or service reports before finalizing their offer to purchase. THESE PARTICULARS ARE ISSUED IN GOOD FAITH BUT DO NOT CONSTITUTE REPRESENTATIONS OF FACT OR FORM PART OF ANY OFFER OR CONTRACT. THE MATTERS REFERRED TO IN THESE PARTICULARS SHOULD BE INDEPENDENTLY VERIFIED BY PROSPECTIVE BUYERS OR TENANTS. NEITHER ROUNDTREE NOR ANY OF ITS EMPLOYEES OR AGENTS HAS ANY AUTHORITY TO MAKE OR GIVE ANY REPRESENTATION OR WARRANTY WHATSOEVER IN RELATION TO THIS PROPERTY.

A fresh approach to your property journey..