



Winnington Close, Hampstead Garden Suburb N2

£6,950,000

Freehold

We are pleased to bring to the market for the first time in over 40 years, this iconic home situated on one of Hampstead Garden Suburbs most sought after cul-de-sac roads.

Winnington Close, Hampstead Garden Suburb N2

Overview

- Six double bedrooms
- Four bathrooms (two Ensuites)
- Four reception rooms
- Ground floor cloakroom
- Study
- Master bedroom with Walk In Wardrobe
- Large Garage
- Huge rear garden
- Popular Cul de Sac In Hampstead garden Suburb



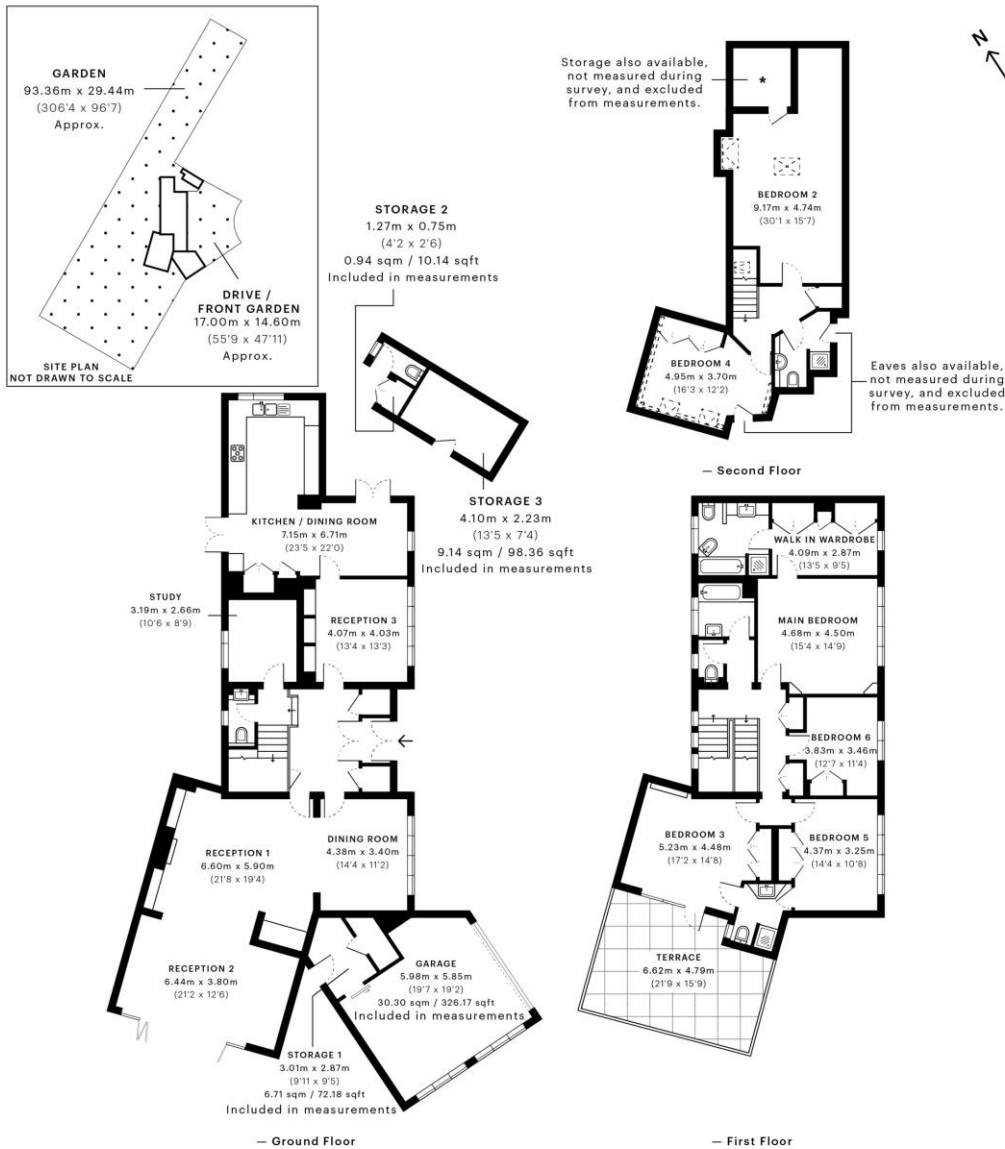
The property offers a great opportunity to any incoming purchaser, to create a substantial home to their own specification (subject to the usual planning consents) with the plot measuring just under half an acre and with gardens extending to 240', providing the possibility to create one of the area's finest residences.



The current home comprises of 6 bedrooms 4 bathrooms and 4 reception rooms, with a large garage, driveway and frontage, offering over 4,600 sq ft of total current accommodation.







GROSS INTERNAL AREA (GIA)
The footprint of the property
400.70 sqm / 4313.10 sqft

NET INTERNAL AREA (NIA)
Excludes walls and external features
Includes washrooms, restricted floor height
320.80 sqm / 3453.06 sqft

EXTERNAL STRUCTURAL FEATURES
Balconies, terraces, verandas etc.
39.25 sqm / 422.48 sqft

RESTRICTED HEAD HEIGHT
Limited use area under 1.9m
0.81 sqm / 8.72 sqft



Spec Verified floor plans are produced in accordance with Royal Institution of Chartered Surveyors' Property Measurement Standards. Plots and gardens are illustrative only and excluded from all area calculations. Due to rounding, numbers may not add up precisely. All measurements shown for the individual room lengths and widths are the maximum points of measurements captured in the scan.

IPMS 3B RESIDENTIAL 425.84 sqm / 4584.47 sqft
IPMS 3C RESIDENTIAL 403.86 sqm / 4342.81 sqft

*Excluded from measurements

SPEC ID: 56321fcb635d440e32c38965

Selling your home?

If you are considering selling your home please contact us today for your no obligation free market appraisal.

Our dedicated and friendly team will assist you. Get in touch today!



1 Sentinel Square, Brent Street, Hendon, NW4 2EL

020 8203 2111 • mail@theroundtree.com



www.theroundtree.com

General: While we endeavour to make our sales particulars fair, accurate and reliable, they are only a general guide to the property and, accordingly, if there is any point which is of particular importance to you, please contact the office and we will be pleased to check the position for you, especially if you are contemplating travelling some distance to view the property. Measurements: These approximate room sizes are only intended as general guidance. You must verify the dimensions carefully before ordering carpets or any built-in furniture. Services: Please note we have not tested the services or any of the equipment or appliances in this property, accordingly we strongly advise prospective buyers to commission their own survey or service reports before finalizing their offer to purchase. THESE PARTICULARS ARE ISSUED IN GOOD FAITH BUT DO NOT CONSTITUTE REPRESENTATIONS OF FACT OR FORM PART OF ANY OFFER OR CONTRACT. THE MATTERS REFERRED TO IN THESE PARTICULARS SHOULD BE INDEPENDENTLY VERIFIED BY PROSPECTIVE BUYERS OR TENANTS. NEITHER ROUNDTREE NOR ANY OF ITS EMPLOYEES OR AGENTS HAS ANY AUTHORITY TO MAKE OR GIVE ANY REPRESENTATION OR WARRANTY WHATSOEVER IN RELATION TO THIS PROPERTY.