



Rundell Crescent, London, NW4

£1,250,000

Freehold

A Bright and deceptively spacious four/five bedroom detached family home extending to 193 sq m/ 2077 sq ft. situated within walking distance of both Hendon Central tube station and Hendon Overground. The accommodation comprises of good size hallway, a large through lounge, newly spacious fitted kitchen/ Breakfast room, ground floor cloakroom, study/Bedroom five and storage room. To the first floor there are four bedrooms and two bathrooms (1 ensuite).

Rundell Crescent, London, NW4

Overview

- Four/Five bedrooms
- Two bathrooms (One Ensuite)
- Good size entrance hall
- Large Through Living room
- Newly fitted kitchen/ Breakfast room
- Ground floor cloakroom
- Study/ Bedroom Five
- Huge storage room
- Spacious rear garden
- Driveway providing off street parking for numerous cars
- Sole Agents



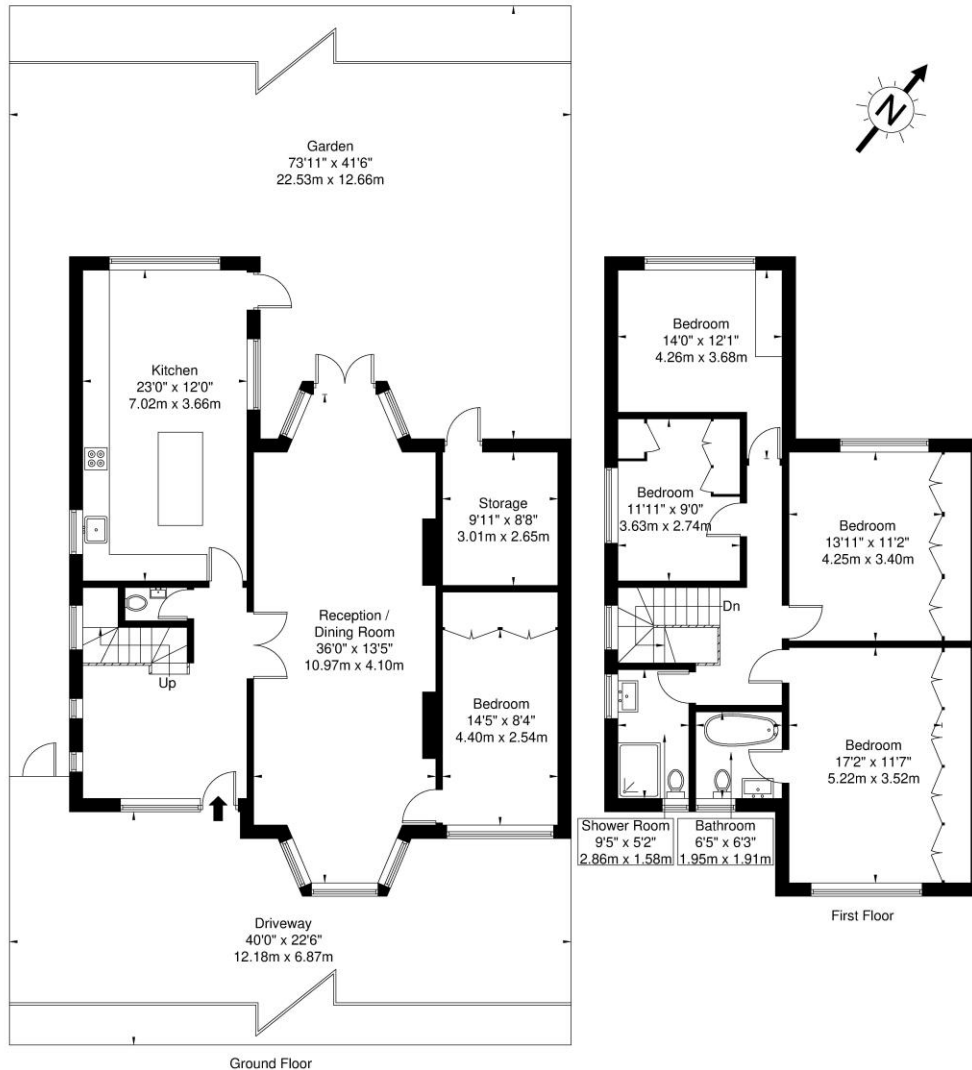
Externally there is driveway parking to the front providing parking for numerous cars and a large rear garden. The property is situated close to Hendon Centrals shopping facilities and major road links. There is also huge potential for expansion (subject to planning permission).
Sole Agents.





Rundell Crescent, Hendon, NW4 3BS

Approx. Gross Internal Area = 193.0 sq m / 2077 sq ft



Ref

Copyright **BLEU PLAN**

The Floor plan is not to scale and measurements and areas shown are approximate and therefore should be used for illustrative purposes only. The plan has been prepared in accordance with the RICS code of Measuring Practice and whilst we have confidence in the information produced it must not be relied on. If there is any aspect of particular importance, you should carry out or commission your own inspection of the property.

Copyright @ BLEUPLAN



Selling your home?

If you are considering selling your home please contact us today for your no obligation free market appraisal.

Our dedicated and friendly team will assist you. Get in touch today!



1 Sentinel Square, Brent Street, Hendon, NW4 2EL

020 8203 2111 • mail@theroundtree.com



www.theroundtree.com

General: While we endeavour to make our sales particulars fair, accurate and reliable, they are only a general guide to the property and, accordingly, if there is any point which is of particular importance to you, please contact the office and we will be pleased to check the position for you, especially if you are contemplating travelling some distance to view the property. Measurements: These approximate room sizes are only intended as general guidance. You must verify the dimensions carefully before ordering carpets or any built-in furniture. Services: Please note we have not tested the services or any of the equipment or appliances in this property, accordingly we strongly advise prospective buyers to commission their own survey or service reports before finalizing their offer to purchase. THESE PARTICULARS ARE ISSUED IN GOOD FAITH BUT DO NOT CONSTITUTE REPRESENTATIONS OF FACT OR FORM PART OF ANY OFFER OR CONTRACT. THE MATTERS REFERRED TO IN THESE PARTICULARS SHOULD BE INDEPENDENTLY VERIFIED BY PROSPECTIVE BUYERS OR TENANTS. NEITHER ROUNDTREE NOR ANY OF ITS EMPLOYEES OR AGENTS HAS ANY AUTHORITY TO MAKE OR GIVE ANY REPRESENTATION OR WARRANTY WHATSOEVER IN RELATION TO THIS PROPERTY.