

Shirehall Park, Hendon, London NW4

A magnificent and spacious four double bedroom three bathroom detached corner plot family residence arranged over three floors situated on the highly sort after Shirehall Estate and within walking distance of Hendon central Tube station, Hendon park, Brent Street shopping facilities, local amenities and places of worship.

£1,249,950
Freehold

Shirehall Park, Hendon, London NW4

Overview

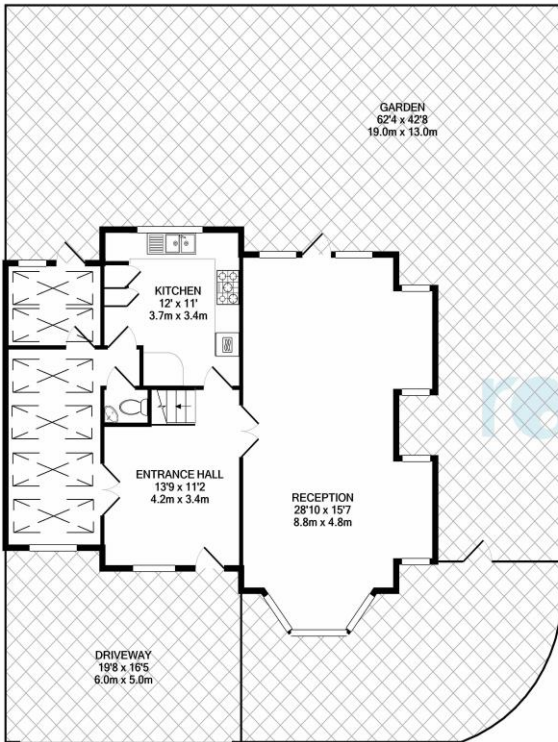
- FOUR DOUBLE BEDROOMS
- THREE BATHROOMS (TWO ENSUITES)
- SPACIOUS DOUBLE RECEPTION ROOM
- KITCHEN/BREAKFAST ROOM
- GROUND FLOOR CLOAKROOM
- LARGE ENTRANCE HALL
- GOOD SIZE REAR AND SIDE GARDENS
- CORNER PLOT
- CHAIN FREE SOLE AGENTS



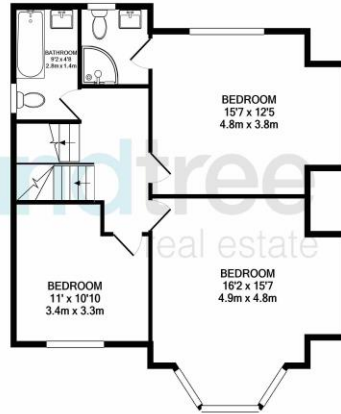
The property is in good condition throughout and comprises of through living/dining room, kitchen/breakfast room, big entrance hallway, ground floor cloakroom, four bedrooms, three bathrooms (two ensembles). There is a large rear and side gardens and to the front a driveway providing off street parking for numerous cars. This is a chain free transaction. Sole agents.



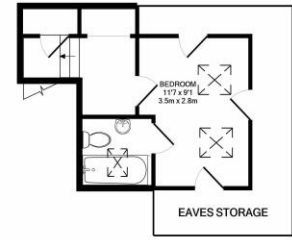




GROUND FLOOR



1ST FLOOR



2ND FLOOR

SHIREHALL PARK NW4
 TOTAL APPROX. FLOOR AREA 1738 SQ.FT. (161.4 SQ.M.)
 Measurements are approximate. Not to scale. Illustrative purposes only.
 Made with Metropix 50021

Score	Energy rating	Current	Potential
92+	A		
81-91	B		
69-80	C		72 C
55-68	D		
39-54	E	46 E	
21-38	F		
1-20	G		

Selling your home?

If you are considering selling your home please contact us today for your no obligation free market appraisal.

Our dedicated and friendly team will assist you. Get in touch today!



1 Sentinel Square, Brent Street, Hendon, NW4 2EL

020 8203 2111 • mail@theroundtree.com



www.theroundtree.com

General: While we endeavour to make our sales particulars fair, accurate and reliable, they are only a general guide to the property and, accordingly, if there is any point which is of particular importance to you, please contact the office and we will be pleased to check the position for you, especially if you are contemplating travelling some distance to view the property. Measurements: These approximate room sizes are only intended as general guidance. You must verify the dimensions carefully before ordering carpets or any built-in furniture. Services: Please note we have not tested the services or any of the equipment or appliances in this property, accordingly we strongly advise prospective buyers to commission their own survey or service reports before finalizing their offer to purchase. THESE PARTICULARS ARE ISSUED IN GOOD FAITH BUT DO NOT CONSTITUTE REPRESENTATIONS OF FACT OR FORM PART OF ANY OFFER OR CONTRACT. THE MATTERS REFERRED TO IN THESE PARTICULARS SHOULD BE INDEPENDENTLY VERIFIED BY PROSPECTIVE BUYERS OR TENANTS. NEITHER ROUNDTREE NOR ANY OF ITS EMPLOYEES OR AGENTS HAS ANY AUTHORITY TO MAKE OR GIVE ANY REPRESENTATION OR WARRANTY WHATSOEVER IN RELATION TO THIS PROPERTY.