



Downes  
&  
Daughters  
ESTATE AGENCY

1 | FOX COURT | KINGS BROMLEY | STAFFORDSHIRE | DE13 7JH







# 1

FOX COURT | KINGS BROMLEY | STAFFORDSHIRE | DE13 7JH

£775,000

A luxury family home, occupying a secluded position within this highly desirable Staffordshire village, built by the renowned Firstpost Homes, credited for dominating the luxury home market for the last 35 years. Benefitting from further improvements and extensions by the current owner, this charming property is tastefully presented and now extends to 2,228 square feet and also boasts a south facing rear garden.

The ground floor accommodation provides a welcoming entrance hallway with an elegant staircase rising to a gallery landing, guest cloakroom, 30 ft double aspect living room, formal dining room, study/gaming room, conservatory, utility and a refitted breakfast kitchen.

The first floor boasts a gallery landing, opulent principal bedroom suite with fitted wardrobes and en suite shower room, three further bedrooms, two with fitted wardrobes, and a luxury contemporary family bathroom. Externally the gardens have been stylishly landscaped and benefit from good levels of privacy with extensive patio areas, shaped lawns (which have just undergone a scarification treatment), established stylishly planted borders. This incredible package is completed by ample amounts of driveway parking and a double garage.

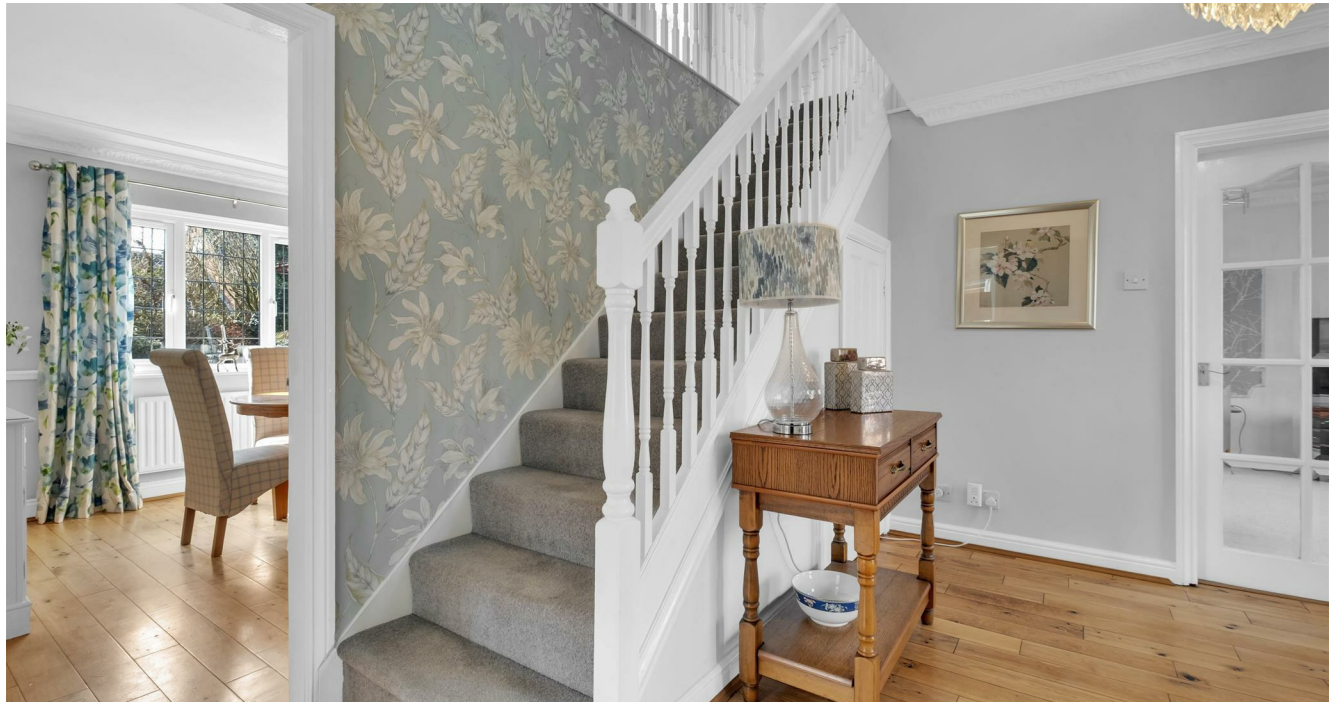
Viewing is essential to appreciate the thoroughly impressive nature of this home.





## GROUND FLOOR

- Spacious Entrance Hallway With Storage Cupboard & Elegant Staircase To First Floor
- Guest Cloakroom
- Breakfast Kitchen
- Double Aspect Living Room With Double Doors To...
- Formal Dining Room
- High Quality Conservatory
- Study Also Suitable For Gaming Or Play Room
- Utility Room With Access To Side Return









## FIRST FLOOR

- Elegant Landing With Airing Cupboard & Loft Access
- Principal Bedroom Suite With Fitted Wardrobes & Storage
- En Suite Shower Room
- Bedroom Two With Fitted Wardrobes
- Bedroom Three With Fitted Wardrobes
- Bedroom Four
- Luxury Family Bathroom











## WHY WE LOVE THIS HOUSE...

"This has been a family home for the last 28 years for me and my late husband. Our daughters and their families have moved back in between house moves and it has accommodated us all easily. Our grandchildren have all attended the village school and I have lovely memories of them growing up here. It's a great house for entertaining especially the garden in the summer months. It's time for a new chapter in my life but I leave my home with wonderful memories".









## OUTSIDE

- Impressive Block Paved Private Driveway
- Double Garage With Side Storage Area
- Stylishly Planted Front Garden & Approach
- South Facing Lawned Rear Garden With Great Levels Of Privacy
- Ample Patio Seating Areas
- Established Borders, Fenced & Walled Boundaries & Gated Side Access

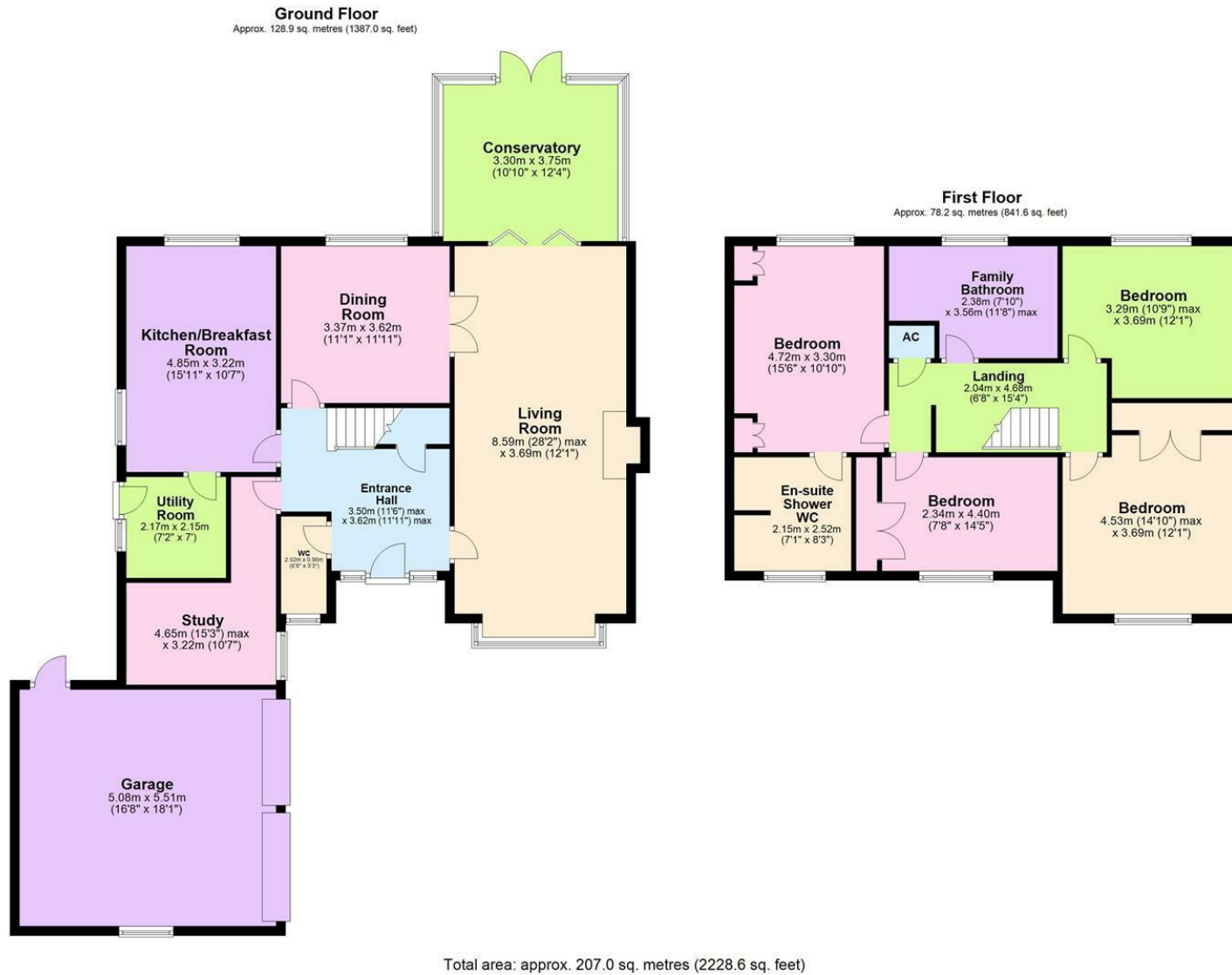








EPC Rating: C



5 Main Street, Whittington, Staffs. WS14 9JU | Tel: 01543 432 099  
[www.downesanddaughters.co.uk](http://www.downesanddaughters.co.uk)

Downes & Daughters Ltd. wishes to emphasize that all property particulars do not constitute part of an offer or a contract. All statements contained herein are made without responsibility on the part of Downes & Daughters. They are not to be relied on as statements or representation of fact and intending purchasers must satisfy themselves by inspection or other wise as to the correctness of each of the statements contained on these particulars including room measurements. The mention of any appliances and/or services within these sales particulars does not imply that they are in full and efficient working order.



Not All Agents Are Equal...