

FORTNAM SMITH & BANWELL



1930'S FAMILY HOME

OPEN PLAN KITCHEN/LIVING SPACE

FRONT & REAR GARDENS

THREE/FOUR BEDROOMS

CLOSE TO TOWN AND SEAFRONT

DOUBLE GARAGE & PARKING



Acasias, Hill Road, Lyme Regis, Dorset, DT7 3PE

£730,000

This immaculate three/four bedroom family home situated close to town benefits from an open plan kitchen/living space, sea glimpses, a sunny south facing garden and a detached double garage.



Found in a popular residential location close to the town centre, seafront and beaches, Acasias is a spacious 1930's family home with views to the sea and along the West Dorset coastline.

Recently modernised and extended by the current owner this 1930's detached family home offers generous and flexible accommodation comprising: Entrance hall, open plan living space with kitchen, dining and lounge areas, conservatory, ground floor bed 4/study with an adjacent shower room and utility room. On the first floor there are 3 bedrooms and a bathroom. Externally the property boasts a detached double garage, additional parking and sunny gardens.

Lyme Regis is famed for its many historic connections and character buildings, and of course, for its well known Cobb Harbour. As a resort, it is considered quite unspoilt, but has most of the shops and amenities that one could require. In addition to which there are numerous leisure activities including both sailing and power boat clubs, a cliff top golf course and a bowling club. The whole coastline with Lyme Regis and Charmouth at its centre has recently been designated a World Heritage Site commonly known as the Jurassic Coast. It lies approximately 5 miles from the market town of Axminster, with its main line railway connections to Waterloo (Approx. 2 3/4 hours). Taunton and town of Dorchester is a similar distance. Locally there are primary schools in Lyme Regis and Uplyme along with the well respected Woodroffe and Colyton Grammar Schools.



The accommodation with approximate measurements comprises:

Entrance Porch with UPVC double glazed French doors. Front door to:

Entrance Hall

Two feature stained glass windows. Stairs rising to first floor. Radiator. Telecom point. Doors to:

Kitchen 10' 10" x 10' 11" (3.30m x 3.32m)

Kitchen fitted with modern duck egg coloured units comprising base cupboards, drawers and matching wall cupboards. Laminate worktops with inset granite effect sink and drainer and inset induction hob with extractor above. Fitted appliances include Lamona double oven and dishwasher. Built in fridge/freezer. Tiled splashbacks. Two UPVC double glazed windows. Door to side access and patio.

Dining/Living area 11' 8" x 23' 4" (3.55m x 7.11m)

UPVC Bay window. UPVC sliding door to conservatory. Two TV points. Two Living Flame electric fireplaces. Radiator. Door to Utility.

Conservatory 11' 11" x 6' 10" (3.63m x 2.08m)

UPVC French doors to garden.

Bedroom 4/Study 9' 5" x 14' 4" (2.87m x 4.37m)

UPVC sliding door to conservatory. UPVC Velux window. Radiator.

Shower Room

White suite comprising: Walk in shower with glass screen. WC. Wash hand basin. Heated towel rail. UPVC Velux window.

Utility room

Fitted with a range of matching cream wall and base cupboard units with inset sink and drainer on laminate worktops. Appliance space for washing machine and single fridge/freezer. UPVC Velux window.

First Floor

Stairs rising to first floor. UPVC window.

Landing

Loft access.

Bedroom 1 13' 11" x 10' 11" (4.24m x 3.32m) inc bay

UPVC double glazed bay window. Radiator. TV point.

Bedroom 2 10' 10" x 14' 3" (3.30m x 4.34m)

UPVC double glazed window with sea and coastal glimpses. TV point. Radiator.

Bedroom 3 10' 10" x 7' 6" (3.30m x 2.28m)

Dual aspect UPVC double glazed windows with sea and coastal glimpses. TV point. Radiator.

Family Bathroom

White suite with part tiled walls comprising: WC. Bath with shower attachment. Wash hand basin. Wall mounted vanity unit. Heated towel rail. Airing cupboard housing hot water tank. UPVC double glazed Oriel window.

Outside

Front Garden

Entrance gate from road with two access doors. Side entrance and outside WC on the left of the property. Shared access road to back garden and garage.

Rear Garden

Two patio areas. Mainly laid to lawn with path to garage. Additional car parking spaces in front of the garage and on gravelled areas.

Garage 19' 4" x 18' 5" (5.89m x 5.61m)

Detached double garage with electric door. UPVC double glazed window and side door.

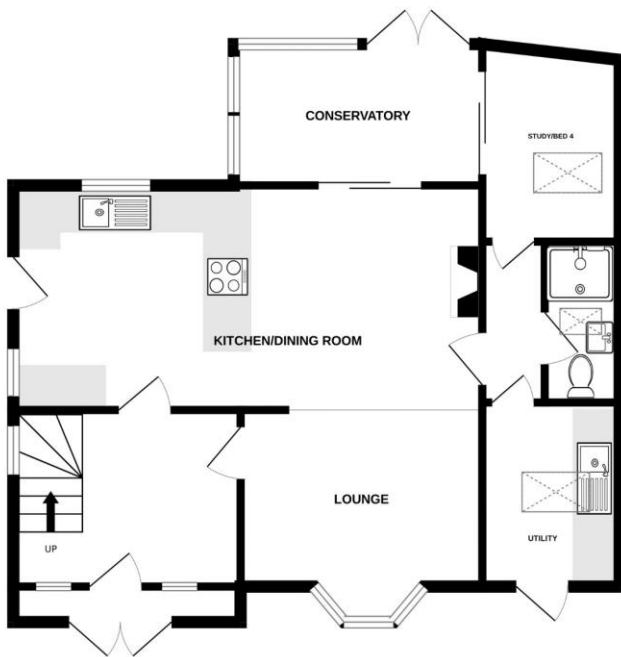
Services

All mains services. Gas fired central heating. Council Tax Band E EPC rating D

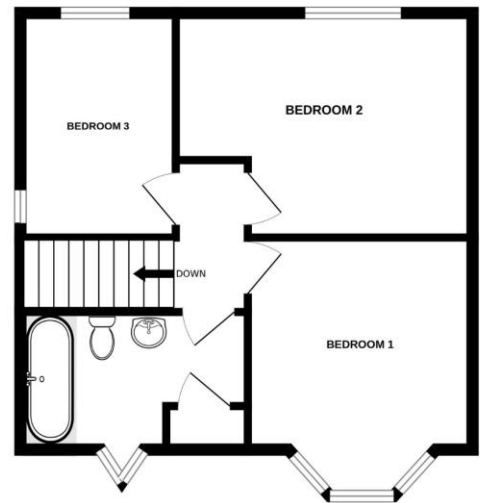
Agents Note

Please note we have not tested any apparatus, fixtures, fittings or services. Interested parties must undertake their own investigations into the working order of these items. All measurements are approximate, photographs and floor plans are provided for guidance only.

GROUND FLOOR



1ST FLOOR



Measurements are approximate. Not to scale. Illustrative purposes only
Made with Metropix ©2023

CONSUMER PROTECTION FROM UNFAIR TRADING REGULATIONS 2008.

The agent has not tested any apparatus, equipment, fixtures and fittings or services and so cannot verify that they are in working order or fit for the purpose. A buyer is advised to obtain verification from their solicitor or surveyor. References to the tenure of a property are based on information supplied by the seller. The agent has not had sight of the title documents. A buyer is advised to obtain verification from their solicitor. Items shown in photographs are not included unless specifically mentioned in the sales particulars. They may however be available by separate negotiation. Buyers must check the availability of any property and make an appointment to view before embarking on any journey to see a property.

DATA PROTECTION ACT 1998

Personal information provided by customers wishing to receive information and/or services from the estate agent and Property Sharing Experts (of which it is a member) for the purpose of providing services associated with the business of an estate agent but specifically excluding mailing or promotions by a third party. If you do not wish your personal information to be used for any of these purposes, please notify us.