



Westfield Rise, Saltdean, Brighton, BN2 8HR
Asking Price £550,000

Westfield Rise, Saltdean, Brighton, BN2 8HR

Discover this impressive four bedroom, two bathroom semi-detached house in Saltdean, offering a self-contained studio, generous living space, and stunning views.

Nestled in the highly sought-after area of Saltdean, this four-bedroom, two-bathroom semi-detached house on Westfield Rise presents an exceptional opportunity for discerning buyers. Boasting an expansive 1495 sq. ft. (139 sq. m.) of meticulously arranged living space, this property combines comfortable family living with the added benefit of versatile income potential.

Upon entering, you are greeted by a welcoming atmosphere that flows seamlessly throughout the home. The kitchen/dining area is designed for both everyday family meals and entertaining guests. This bright and airy space is complemented by a separate, lounge, providing a dedicated area for relaxation and social gatherings. The layout ensures a practical and enjoyable living experience, with ample room for various furniture arrangements and personal touches.

One of the standout features of this remarkable property is the self-contained studio. This versatile space offers income potential, whether utilized as a rental unit, a dedicated home office, an annex for extended family, or even a creative studio. Its independent nature provides flexibility and adds considerable value to the home, catering to a wide range of lifestyle needs.

The upper levels of the house are home to four generously sized bedrooms, offering comfortable retreats for all family members.

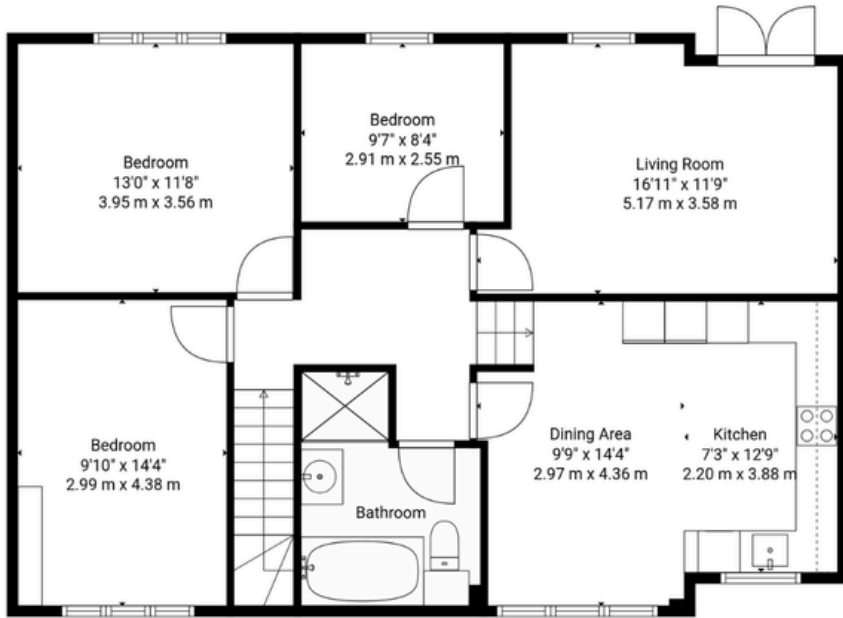
The two well-appointed bathrooms ensure convenience and privacy, designed with modern fixtures and fittings.

Externally, the property benefits from a private driveway, offering convenient off-street parking.

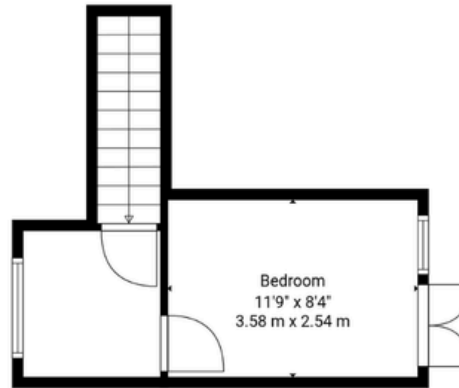
Saltdean itself is a vibrant and friendly community, offering a superb quality of life. Residents benefit from excellent local amenities, including shops, cafes, and recreational facilities. The area is well-regarded for its proximity to the stunning Sussex coastline, providing easy access to beaches, cliff-top walks, and outdoor pursuits. Furthermore, Brighton city centre is just a short drive away, offering a wider array of shopping, dining, and entertainment options, along with excellent transport links.

This four-bedroom semi-detached house on Westfield Rise represents an outstanding opportunity to acquire a spacious family home with unique features and significant potential. Its prime location, generous proportions, and the added advantage of a self-contained studio make it an ideal choice for those seeking a versatile and appealing property in a desirable coastal setting.





Floor 2



Floor 3



Floor 1

Total Internal Area = 1495 sq ft/ 139 sq m
For identification only - not to scale



Agents Notes

Tenure Freehold
Council Tax Band D

Energy Performance Certificate

Score	Energy rating	Current	Potential
92+	A		
81-91	B		
69-80	C	72 C	79 C
55-68	D		
39-54	E		
21-38	F		
1-20	G		



Oakley

Your Sussex Property Expert

Brighton & Hove Office
01273 688 881

3-6 North Road, Brighton BN1 1YA
www.oakleyproperty.com
sales@oakleyproperty.com

We also have offices in:
Shoreham by Sea
Lewes Town & Country



A new way of marketing property

Get in touch to book a viewing or valuation of
your own property



Please note:

These details have been produced in good faith and are believed to be accurate based upon the information supplied but they are not intended to form part of a contract. All statements contained in these particulars as to this property are made without responsibility on the part of Oakley, the vendors or lessors and are NOT to be relied on as statements or representations of fact. Any intending purchasers must satisfy themselves by inspection or otherwise as to the correctness of each of the statements contained in these particulars. The vendors, Oakley and any person who work in their employment do not have any authority to make or give any representation or warranty. The floor plan is for illustrative purposes only and the accuracy cannot be relied upon or guaranteed and no responsibility is taken for an error, omission or mis-statement. The total floor area shown has been taken from the EPC.