



The Brewery 1881, 30 South Street, Portslade, BN41 2AQ
From £375,000

The Brewery 1881, 30 South Street, Portslade, BN41 2AQ

A two bedroom top floor apartment with stunning views, gated permit parking, a long lease and the remainder of a 10 year ICW new homes warranty.

The Property

This two bedroom apartment is part of The Old Brewery, located in the original brewery building on the top floor. It has been finished to exacting standards, using carefully chosen materials to reflect the exclusive quality of the development. Stylised heritage windows call to the original character of the building, while contemporary design brings the space into the 21st Century.

The open plan, kitchen, dining and living space, offers panoramic views over Portslade to the sea. Oak engineered flooring and a subtle palette of colours will complement modern furnishings, and the kitchen area has been well-designed to accentuate the space with seamless matt cashmere handleless units paired with marbled white worktops and upstands. Integrated Bosch appliances include a fan oven, extractor fan, electric touch control hob, fridge freezer and washing machine.

Comfortably spacious and fitted with smoked grey carpets, the double bedrooms feel luxurious, and the bathroom has been designed with Grohe fittings for simplicity and style. The porcelain part-tiled walls, floor tiles and stone sills add refined glamour to the space and a wall mounted, chrome heated towel rail completes the look.

The bathroom is fitted with a white suite and the lighting is atmospheric with recessed LEDs and an illuminated wall mirror.

As part of the regeneration, the development also incorporates office space and a new gym, meaning you can stay in shape without having to travel (subject to subscription).

The Location

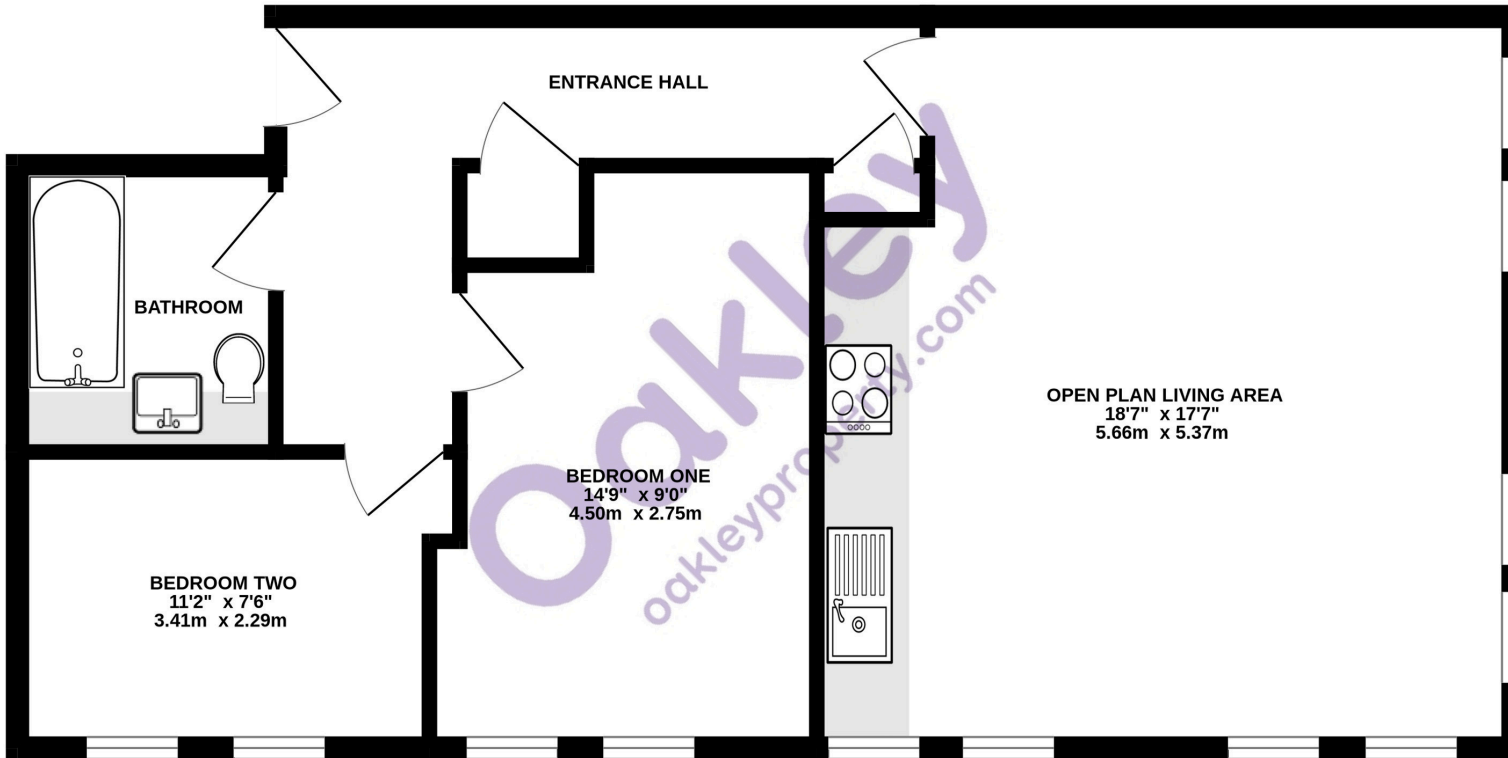
Steeped in history and brimming with character and style, The Old Brewery is an iconic and listed structure within Portslade Old Village which has dominated the landscape here since 1881. It sits within the Parish of Portslade which is part of the City of Brighton and Hove on the south-east coast, just 60 miles from London, half a mile north of the main A270 east-west thoroughfare and a mile south of the A27 Brighton bypass linking to the A23.

Bordered by the South Downs National Park to the north, Portslade Old Village is ideally positioned between the coast and the countryside, offering all residents the perfect balance between town and country lifestyles.



FOURTH FLOOR

693 sq.ft. (64.4 sq.m.) approx.



TOTAL FLOOR AREA : 693 sq.ft. (64.4 sq.m.) approx.
Made with Metropix ©2024



Agents Notes	Score	Energy rating	Current	Potential
Tenure Leasehold	92+	A		
999 Year Lease Term From 2022	81-91	B		
Ground Rent- £0	69-80	C	76 C	76 C
Service Charge- Approx. £2,277.22 pa	55-68	D		
Council Tax Band C	39-54	E		
	21-38	F		
	1-20	G		



Please note:
These details have been produced in good faith and are believed to be accurate based upon the information supplied but they are not intended to form part of a contract. All statements contained in these particulars as to this property are made without responsibility on the part of Oakley, the vendors or lessors and are NOT to be relied on as statements or representations of fact. Any intending purchasers must satisfy themselves by inspection or otherwise as to the correctness of each of the statements contained in these particulars. The vendors, Oakley and any person who work in their employment do not have any authority to make or give any representation or warranty. The floor plan is for illustrative purposes only and the accuracy cannot be relied upon or guaranteed and no responsibility is taken for an error, omission or mis-statement. The total floor area shown has been taken from the architectural drawings.



Oakley

Your Sussex Property Expert

Brighton & Hove Office
01273 688 881
3-6 North Road, Brighton BN1 1YA
www.oakleyproperty.com
brighton@oakleyproperty.com

We also have offices in:
Shoreham by Sea
Lewes Town & Country
The London Office



A new way of marketing property

Get in touch to book a viewing or valuation of your own property

