



Roundhill Crescent, Brighton, BN2 3FQ
Asking Price £725,000

Roundhill Crescent, Brighton, BN2 3FQ

Delightful 5 bedroom Victorian home with period features, spacious rooms, rooftop views, and a lovely garden, located in the popular Roundhill Conservation area.

Discover an enchanting slice of Victorian charm in the heart of Brighton's Roundhill Conservation area with this charming 5 bedroom home. Within walking distance of the centre, this property offers a perfect blend of character and convenience, making it an ideal choice for families, professionals, or those seeking a timeless retreat.

Step through the front door and be greeted by a wealth of period features, including beautiful fireplaces and elegant cornices, that exude the timeless grandeur of the Victorian era. The ground floor boasts two versatile rooms, which can be utilized as bedrooms, office space or hobby rooms, catering to your specific needs. A modern kitchen, complete with a dining area and views of the garden, provides the perfect space to create culinary masterpieces. With doors leading to a conservatory, soak in the natural light and enjoy a seamless transition between indoor and outdoor living.

The half landing offers a cozy bedroom and a well-appointed bathroom, featuring a clawfoot bath and separate shower enclosure, providing a tranquil space to unwind and rejuvenate. Ascend to the first floor and be greeted by a light-filled and spacious drawing room that captures panoramic rooftop views to the sea through its bay windows. Immerse yourself in the soothing coastal vista as you relax and entertain friends and family in this inviting space. And a further bedroom overlooking the rear garden.

Venture further upstairs to discover a delightful top-floor bedroom. Awash with natural light from skylight windows, this room boasts wood floors, under-eaves storage areas, and convenient access to a cloakroom, providing a private sanctuary for relaxation and tranquillity.

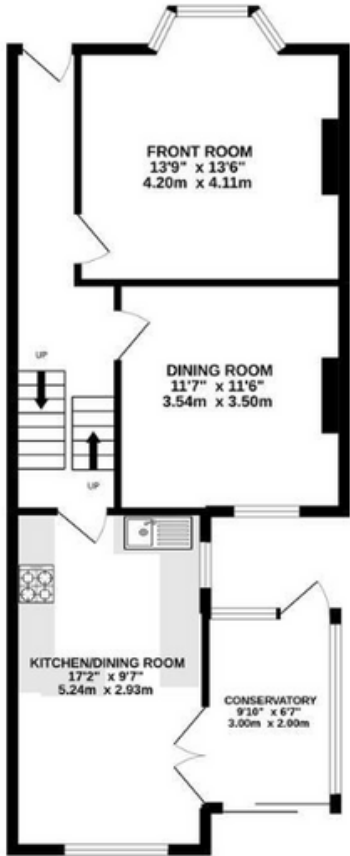
The outdoor space is equally as captivating, with a tiered west-facing garden at the rear of the property. Embrace al fresco living as you bask in the sun-drenched patio areas, surrounded by mature planted beds and a leafy backdrop. Whether it's enjoying a morning coffee, hosting a garden party, or simply unwinding after a long day, this enchanting garden offers a peaceful oasis.

Completing the exterior features is a small stepped garden at the front, enhancing the picture-perfect appeal of this exceptional property. With Brighton railway station, local shops, and amenities within easy walking distance, convenience is key for modern lifestyles.

Spanning an impressive 1475 square feet (137 square meters), this delightful Victorian home offers ample space and a harmonious blend of period architectural details with contemporary comforts.



GROUND FLOOR
640 sq.ft. (59.5 sq.m.) approx.



FIRST FLOOR
587 sq.ft. (54.5 sq.m.) approx.



SECOND FLOOR
248 sq.ft. (23.0 sq.m.) approx.



ROUNDHILL CRESCENT

TOTAL FLOOR AREA : 1475 sq.ft. (137.0 sq.m.) approx.

Whilst every attempt has been made to ensure the accuracy of the floorplan contained here, measurements of doors, windows, rooms and any other items are approximate and no responsibility is taken for any error, omission or mis-statement. This plan is for illustrative purposes only and should be used as such by any prospective purchaser. The services, systems and appliances shown have not been tested and no guarantee as to their operability or efficiency can be given.
Made with Metropix ©2022



Oakley

Your Sussex Property Expert

Brighton & Hove Office
01273 688 881
3-6 North Road, Brighton BN1 1YA
www.oakleyproperty.com
brighton@oakleyproperty.com

We also have offices in:
Shoreham by Sea
Lewes Town & Country
The London Office



A new way of marketing property

Get in touch to book a viewing or valuation of your own property



Energy Performance Certificate

Score	Energy rating	Current	Potential
92+	A		
81-91	B		
69-80	C		
55-68	D	60 D	78 C
39-54	E		
21-38	F		
1-20	G		

Agents Notes

Tenure Freehold
Council Tax Band D



Please note:

These details have been produced in good faith and are believed to be accurate based upon the information supplied but they are not intended to form part of a contract. All statements contained in these particulars as to this property are made without responsibility on the part of Oakley, the vendors or lessors and are NOT to be relied on as statements or representations of fact. Any intending purchasers must satisfy themselves by inspection or otherwise as to the correctness of each of the statements contained in these particulars. The vendors, Oakley and any person who work in their employment do not have any authority to make or give any representation or warranty. The floor plan is for illustrative purposes only and the accuracy cannot be relied upon or guaranteed and no responsibility is taken for an error, omission or mis-statement. The total floor area shown has been taken from the EPC.