



URBAN ESTATES

DA12

SALES, LETTINGS AND PROPERTY MANAGEMENT

Wrotham Road

Meopham, Gravesend, DA13 0HJ

- Rare Opportunity
- 2 Bedroom Ground Floor Apartment
- Popular Village Location
- Allocated Parking

Asking Price Of £345,000

EPC Rating '81'



1 Sunningdale Court , Wrotham Road, Meopham, Gravesend, DA13 0HJ



Property Description

Rarely Available! Urban Estates are pleased to present this Spacious "Brazier Built" Ground Floor Apartment located in the sought after Village of Meopham, Comprising of 2 Double Bedrooms, Large Lounge, Fully Fitted Kitchen, and 2 Bathrooms.

The Property benefits from; Secure Entry, Gas Fired Central Heating, Fully Double Glazed, Integrated appliances, Allocated Parking and Great Transportation Links

HALL

12' 04" x 6' 06" (3.76m x 1.98m)
Wood Flooring, Radiator, Intercom system, Doors to all Rooms, Airing Cupboard.

LOUNGE

15' 11" x 12' 08" (4.85m x 3.86m)
Wood Flooring, Radiator, Double Glazed Window to Front



KITCHEN

9' 02" x 6' 09" (2.79m x 2.06m)

Tiled Flooring, Fitted wall and Base Units, Integrated Fridge freezer, Double Oven, Gas Hob, Extractor Hood, Washing machine, Double Glazed Window to side, Part Tiled Walls and Boiler

BATHROOM

6' 10" x 5' 07" (2.08m x 1.7m)

Tiled Flooring, Part Tiled Walls, Radiator, WC, Wash Hand Basin, Bath tub with shower Connection



BEDROOM 1

12' 09" x 11' 10" (3.89m x 3.61m)

Wood Flooring, Radiator, Double Glazed Window to Rear, Fitted Wardrobe

ENSUITE

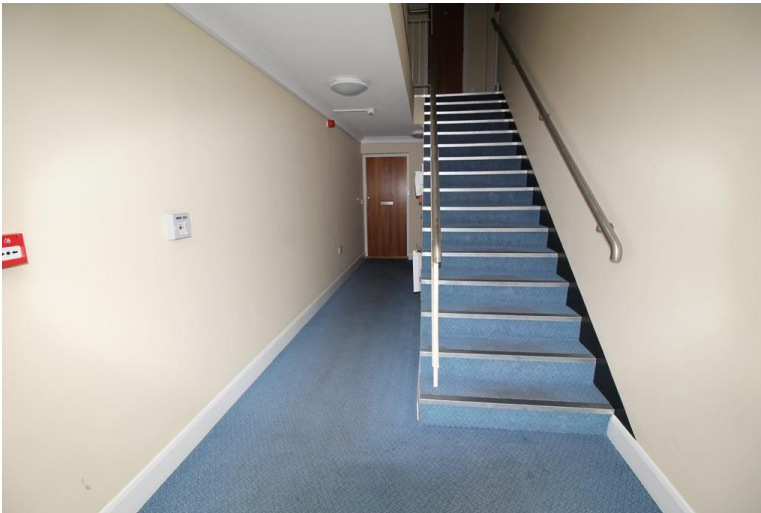
5' 11" x 5' 09" (1.8m x 1.75m)

Tiled Floor, Part Tiled Walls, Frosted Double Glazed window to Rear, Radiator, WC, Wash Hand Basin, Walk in Shower, Shaving Port

BEDROOM 2

10' 02" x 9' 02" (3.1m x 2.79m)

Wood Flooring, Double Glazed Window to Rear, Radiator.



ALLOCATED PARKING





20 Windmill Street
Gravesend
Kent
DA12 1AS

www.urbanestatesuk.com
info@urbanestatesuk.com
01474 532 723

Agents Note: Whilst every care has been taken to prepare these sales particulars, they are for guidance purposes only. All measurements are approximate and are for general guidance purposes only and whilst every care has been taken to ensure their accuracy, they should not be relied upon and potential buyers are advised to recheck the measurements