



Double Garage Coronation Avenue, Rothwell NN14

- DETACHED DOUBEL GARAGE
- DOUBLE PARKING
- Internal length c. 5.34m (17' 6") x 4.71m (15' 4")
- Approx. 4.26m (14') door opening

PRICE
£22,500

23 High Street, Rothwell
01536 418100
info@simonac.co.uk
simonac.co.uk

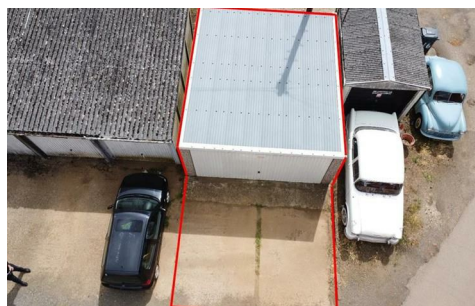
SIMON & CO.
ESTATE AGENTS

Double Garage Coronation Avenue,

£22,500 Freehold

DETACHED DOUBLE GARAGE AND PARKING located within Coronation Avenue. Internal length c. 5.34m (17' 6") x 4.71m (15' 4") = c.25 sq.m (700 sq ft). Built of 75mm Reinforced concrete wall panels with render coating under box profile Plastico coated steel roof with 25mm Class 1 Polythene foam ceiling installation. Approx. 4.26m (14') up and over door opening.

Planning approval KET/2009/0208 - No services connected



We would like to point out that all measurements set out in these sales particulars are approximate and are for guidance only. We have not tested any apparatus, equipment, systems or services etc. And cannot confirm that they are in full or efficient working order or fit for their purpose. No assumption should be made as to compliance with planning consents or current usage. Nothing in these particulars is intended to indicate that any carpets or curtains, furnishings or fittings, electrical goods (whether wired or not), gas fires or light fittings, or any other fixtures not expressly included form any part of the property being offered for sale. While we endeavor to make our sale details accurate and reliable, if there is any point which is of particular importance to you, please, contact us and we will be pleased to confirm the position for you. Wide angled lens may have been used on all photography.

23 High Street, Rothwell
01536 418100
info@simonac.co.uk
simonac.co.uk

SIMON & CO.
ESTATE AGENTS