



## Oakwell Barn, Rothwell Road, Glendon NN14 1QE

- Village Setting
- Self Contained & fully furnished
- Short or Long terms options
- All inclusive

PRICE  
**£975**  
PCM

We would like to point out that all measurements set out in these sales particulars are approximate and are for guidance only. We have not tested any apparatus, equipment, systems or services etc. And cannot confirm that they are in full or efficient working order or fit for their purpose. No assumption should be made as to compliance with planning consents or current usage. Nothing in these particulars is intended to indicate that any carpets or curtains, furnishings or fittings, electrical goods (whether wired or not), gas fires or light fittings, or any other fixtures not expressly included form any part of the property being offered for sale. While we endeavor to make our sale details accurate and reliable, if there is any point which is of particular importance to you, please, contact us and we will be pleased to confirm the position for you. Wide angled lens may have been used on all photography.



23 High Street, Rothwell  
01536 418100  
info@simonac.co.uk  
simonac.co.uk



**\*\*IN PERSON AND VIDEO VIEWS AVAILABLE \*\* - FULLY FURNISHED INCLUSIVE OF BILLS, BUT NOT COUNCIL TAX \*\* (TO REASONABLE USAGE) QUALITY SHORT TO LONG TERM (Minimum 3 months) STONE PROPERTY.** The Accommodation, which is fully double-glazed and comprises; Shared Entrance Hall and stairway to the front door opening into the Lounge/sitting room mezzanine bedroom area above. Kitchen with washing machine, Oven and Hob and fridge freezer, Shower room. The price per month tariff includes utility bills, full furnishing and comprehensive facilities including flat screen television. Air Conditioned and heated. We are sorry to say; no children or pets. What3Words Directions to property link; <https://what3words.com/removed.pencils.irritable>

## COMMUNAL RECEPTION HALL

Having stair case raising to first floor and opening into Lounge/Sitting Room

## LOUNGE/SITTING ROOM

16'2" min widening to 18'11" max x 17'8" (4.93m min widening to 5.78m max x 5.39m )

Having solid wood feature beams and stair case raising to Bedroom/mezzanine floor area, exposed stone feature walls, Upvc double glazed windows to front, side and rear, including window seat, panelled door to Kitchen

## KITCHEN

6'0" x 7'1" (1.85m x 2.17m )

Offering a range of high and base level cupboard units, work tops and tiled surrounds, sink unit with mixer tap, built in oven, hob and extractor, as well as automatic washing machine, high ceiling and beam ceiling and sky light window, laminated wood block style flooring, and door through to Shower Room

## SHOWER ROOM

8'7" x 7'1" (2.62m x 2.18m )

Comprising close coupled Wc, contemporary style glass hand basin and jet shower cubicle, opaque upvc double glazed window to side, high ceiling and spot lights and exposed stone work

## BEDROOM

9'2" x 8'3" (2.81m x 2.52m )

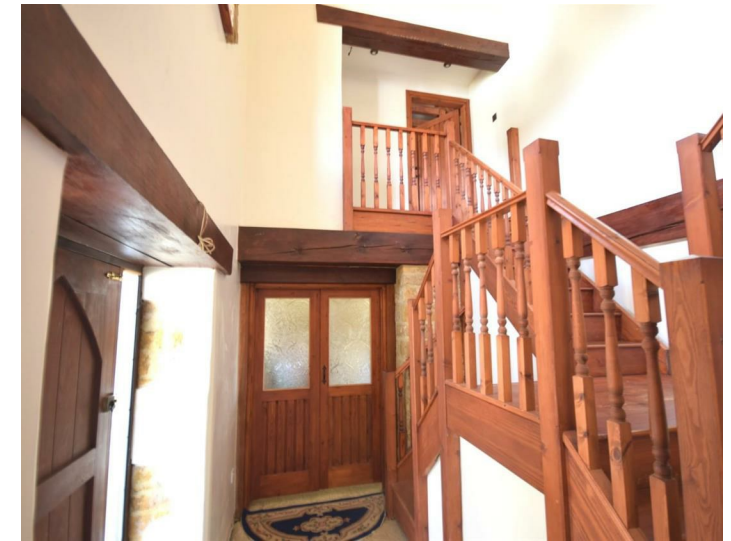
Having solid wood flooring, balustrades and beams to ceiling

## OUTSIDE

The property benefits allocated parking space

## DIRECTIONAL NOTE

Following the road out of Rothwell on the Glendon Road towards Corby/Kettering, follow round towards Oakwell Barns which can be found on the right hand side - postcode attached with the brochure also to include the google map layout



call to view 01536 418100

