

# Stack & Bonner

*passionate about property...*



**£1,150,000**

**Freehold**

Plot 6, 4 Kingsborough Place,  
Kingston Upon Thames  
KT2 6BD

Nestled in the heart of fashionable North Kingston, this exclusive development consists of just eleven bespoke houses and three attractive apartments.

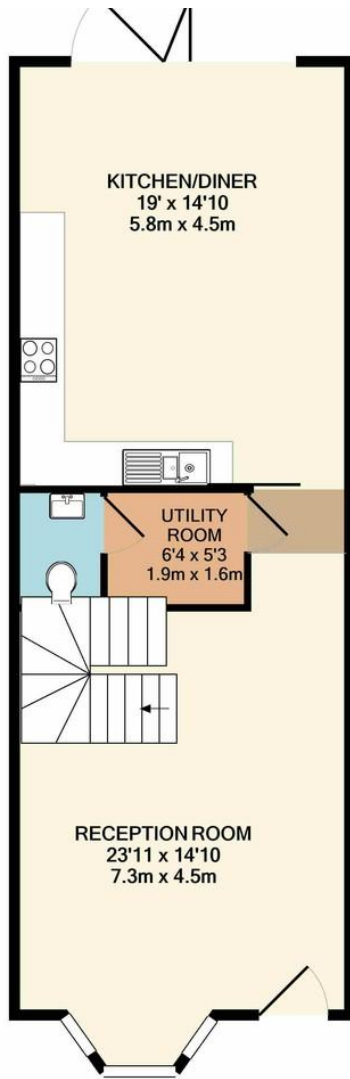
Designed to the highest standard, the units benefit from many outstanding features including: German designer kitchens with solid work tops and Neff appliances, engineered wood flooring to the ground floors, double glazed windows, porcelain tiling in the bathrooms and underfloor heating throughout.



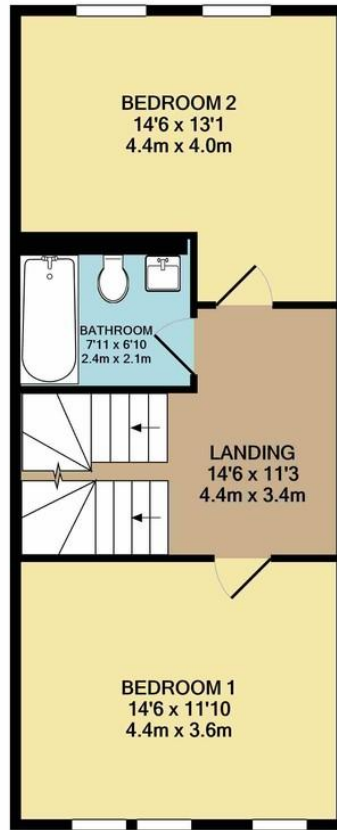
[kingston.sales@stackandbonner.com](mailto:kingston.sales@stackandbonner.com)

[www.stackandbonner.com](http://www.stackandbonner.com)

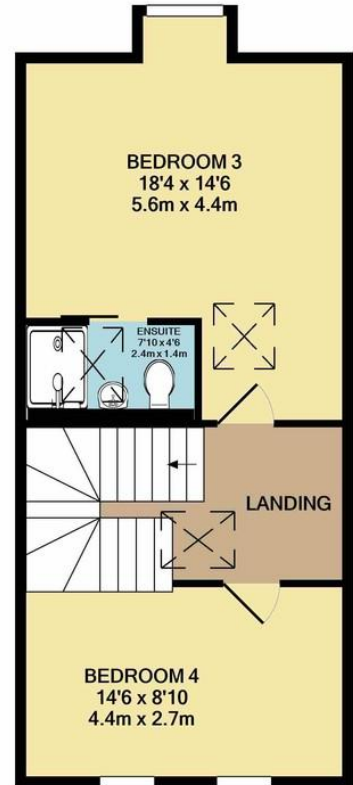
Kingston office 020 8974 8844



GROUND FLOOR



1ST FLOOR



2ND FLOOR

HOUSE 6, BOROUGH ROAD, KINGSTON UPON THAMES  
TOTAL APPROX. FLOOR AREA 1615 SQ.FT. (150.0 SQ.M.)

Whilst every attempt has been made to ensure the accuracy of the floor plan contained here, measurements of doors, windows, rooms and any other items are approximate and no responsibility is taken for any error, omission, or mis-statement. This plan is for illustrative purposes only and should be used as such by any prospective purchaser. The services, systems and appliances shown have not been tested and no guarantee as to their operability or efficiency can be given  
Made with Metropix ©2020

[kingston.sales@stackandbonner.com](mailto:kingston.sales@stackandbonner.com)

Kingston office 020 8974 8844

[www.stackandbonner.com](http://www.stackandbonner.com)