

1 Bedroom Apartment Hollyfield Road, Surbiton. £399,950 Share of Freehold / Leasehold 999 years

Apartment 3, Foyle Court, Hollyfield Road, Surbiton

Foyle Court, a brand new boutique development of just 7 luxury homes.

This 1 bedroom apartment is located on the 1st floor of Foyle Court and boasts,
542 sq ft of internal living space with a private balcony.

An exclusive development of just 7 brand new apartments ideally situated on Hollyfield Road,
directly opposite Fishponds Conservation area, a haven and tranquil retreat with parkland, ponds and wildlife.

All 7, high specification apartments have been finished to an exemplary standard
and are located within a short walk to Surbiton Station with

frequent high speed trains, taking just 19 minutes to London Waterloo.

Please note floorplans and images are for illustration purposes only, some images are taken of a previous development.

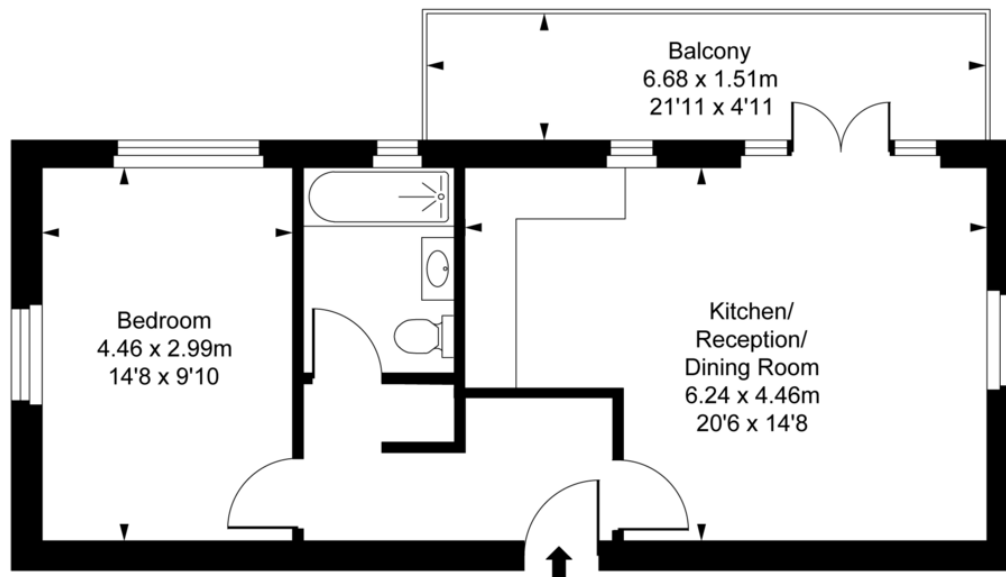
WWW.STACKANDBONNER.COM

020 8974 8844

sales@stackandbonner.com



Foyle Court,
Hollyfield Road, KT5
Approximate Gross Internal Area
50.31 sq m / 542 sq ft



First Floor

ILLUSTRATION FOR IDENTIFICATION PURPOSES ONLY
ALL MEASUREMENTS AND AREA FIGURES SUPPLIED BY OTHERS, ACCURACY IS NOT GUARANTEED.
THIS PLAN MUST NOT BE REPRODUCED BY ANY OTHER PERSON WITHOUT PERMISSION

- 1 Bedroom Apartment
- Brand New Boutique Development of 7 Luxury Homes
- Private Balcony
- Open Plan Living/ Kitchen / Dining Room
- Luxury Bathroom
- High Specification Throughout
- 542 Sq ft
- 1st Floor
- Located Opposite Fishponds Conservation Area
- Close to Local Amenities and within a short walk of Surbiton Station
- Predicted Service Charge: £1,130 per annum
- Share of Freehold with a 999 year underlying lease