

A close-up photograph of several white thistle flowers. The flowers have a central green core with small, yellowish-green florets. The petals are white and have a spiky, serrated appearance. The leaves are green and also have a spiky, serrated texture. The background is dark and out of focus.

Foyle Court, Hollyfield Road,  
Surbiton KT5 9AU









All images & floorplans in this brochure are for illustration purposes only



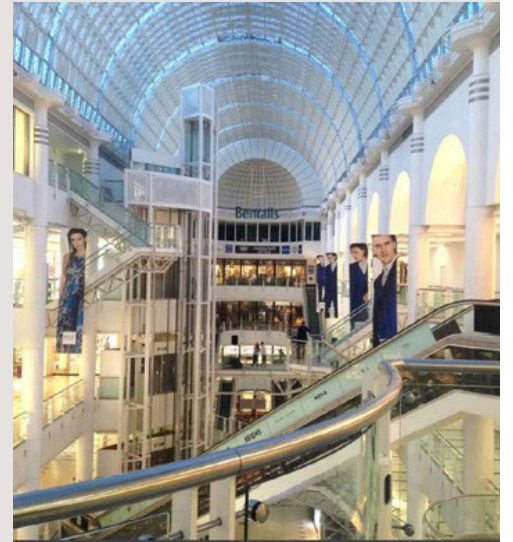
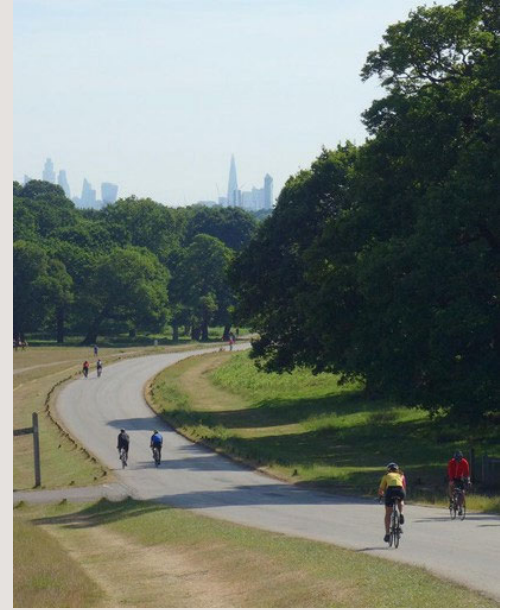


# Surbiton:

Surbiton is an affluent riverside town in South West London. It's a very vibrant location with a wide range of shops, cafes, excellent pubs and bars and award-winning restaurants. There is also a splendid selection of green spaces and parks just moments away. It should also be mentioned that it has the highly regarded Surbiton Farmers' Market on the third Saturday of every month. Surbiton is sumptuously positioned alongside the Thames and accordingly, walking, running, cycling and water sports are all on your doorstep.

The town also boasts the renowned Surbiton Racket and Fitness Club, established in 1881, which hosts the annual International Tennis Federation Surbiton Trophy which precedes the Wimbledon Championship. Surbiton is perfectly positioned with Hampton Court Palace, Bushy Park and Richmond Park and Kingston's Cosmopolitan Town Centre within easy reach. With an excellent selection of schools, a vibrant local community and trains taking only 16 minutes to Waterloo, the area has become one of the most desirable in South West London.









Foyle Court is positioned opposite Fishponds Conservation area.  
A haven and tranquil retreat with parkland, ponds and wildlife.







All images & floorplans in this brochure are for illustration purposes only



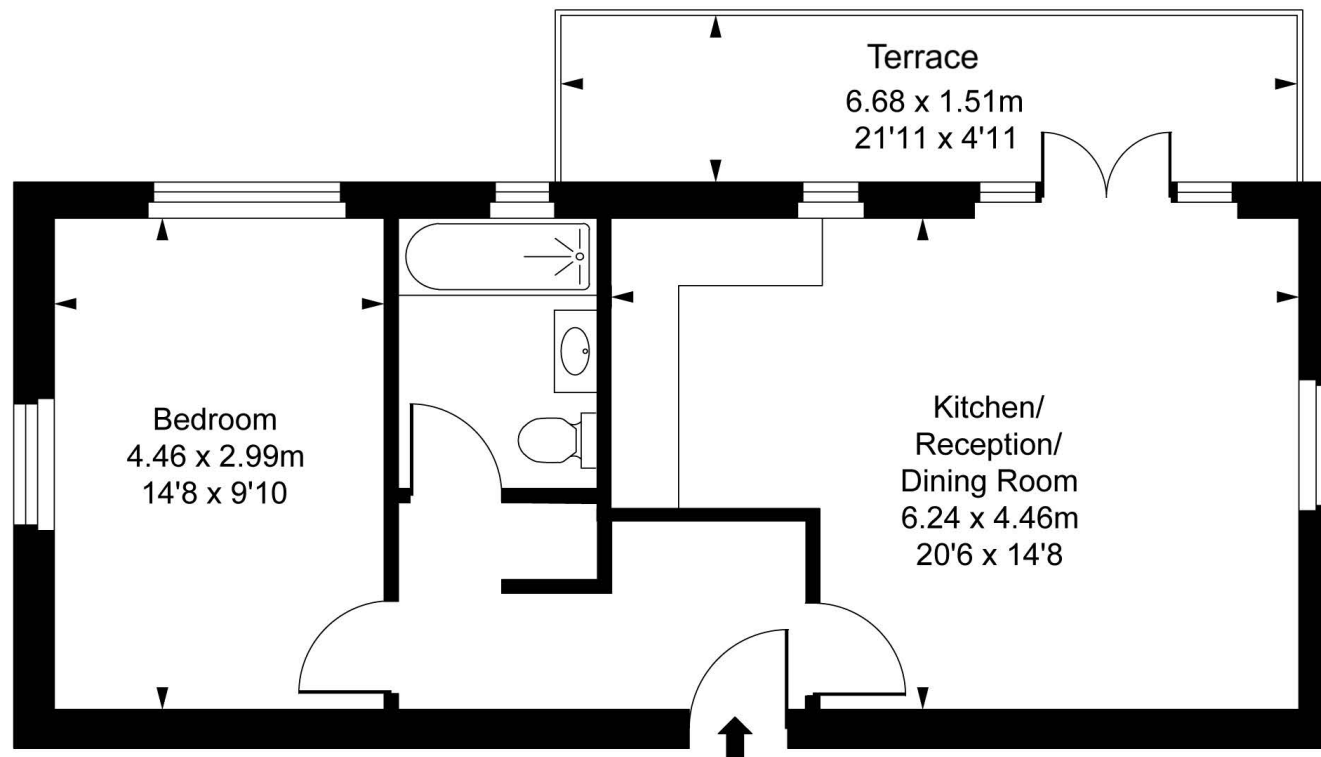
## Foyle Court Kitchen Designs – Indicative Images





# Apartment One:

Foyle Court,  
 Hollyfield Road, KT5  
 Approximate Gross Internal Area  
 50.31 sq m / 542 sq ft



Ground Floor

ILLUSTRATION FOR IDENTIFICATION PURPOSES ONLY  
ALL MEASUREMENTS AND AREA FIGURES SUPPLIED BY OTHERS, ACCURACY IS NOT GUARANTEED.  
THIS PLAN MUST NOT BE REPRODUCED BY ANY OTHER PERSON WITHOUT PERMISSION



## Apartment Two:

Foyle Court,  
Hollyfield Road, KT5  
Approximate Gross Internal Area  
74.50 sq m / 802 sq ft

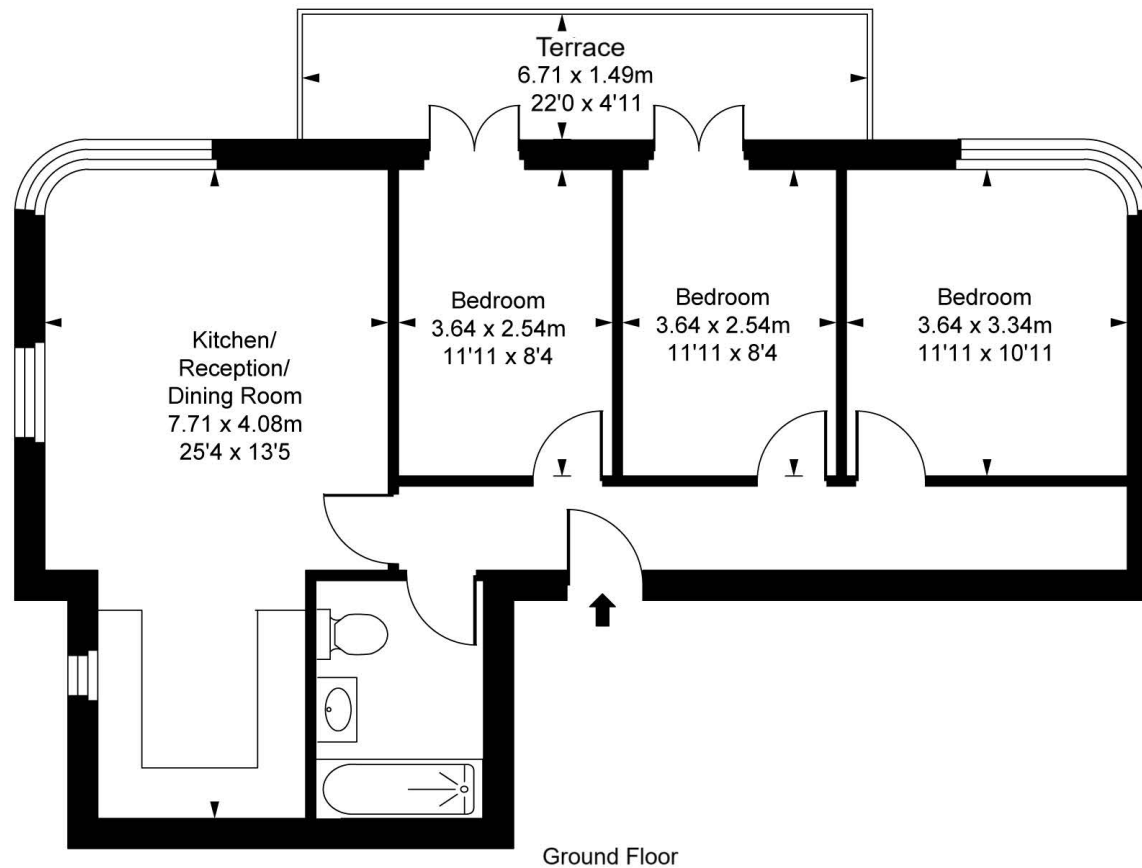
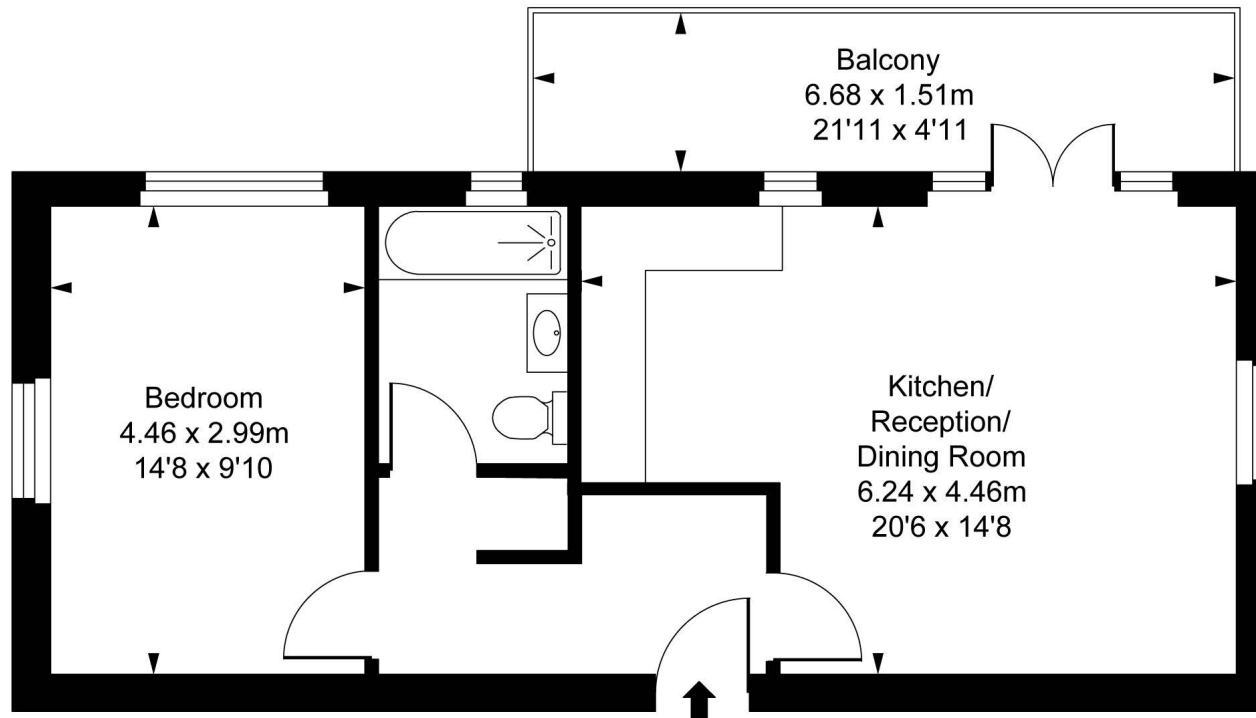


ILLUSTRATION FOR IDENTIFICATION PURPOSES ONLY  
ALL MEASUREMENTS AND AREA FIGURES SUPPLIED BY OTHERS. ACCURACY IS NOT GUARANTEED.  
THIS PLAN MUST NOT BE REPRODUCED BY ANY OTHER PERSON WITHOUT PERMISSION



## Apartment Three:

Foyle Court,  
Hollyfield Road, KT5  
Approximate Gross Internal Area  
50.31 sq m / 542 sq ft



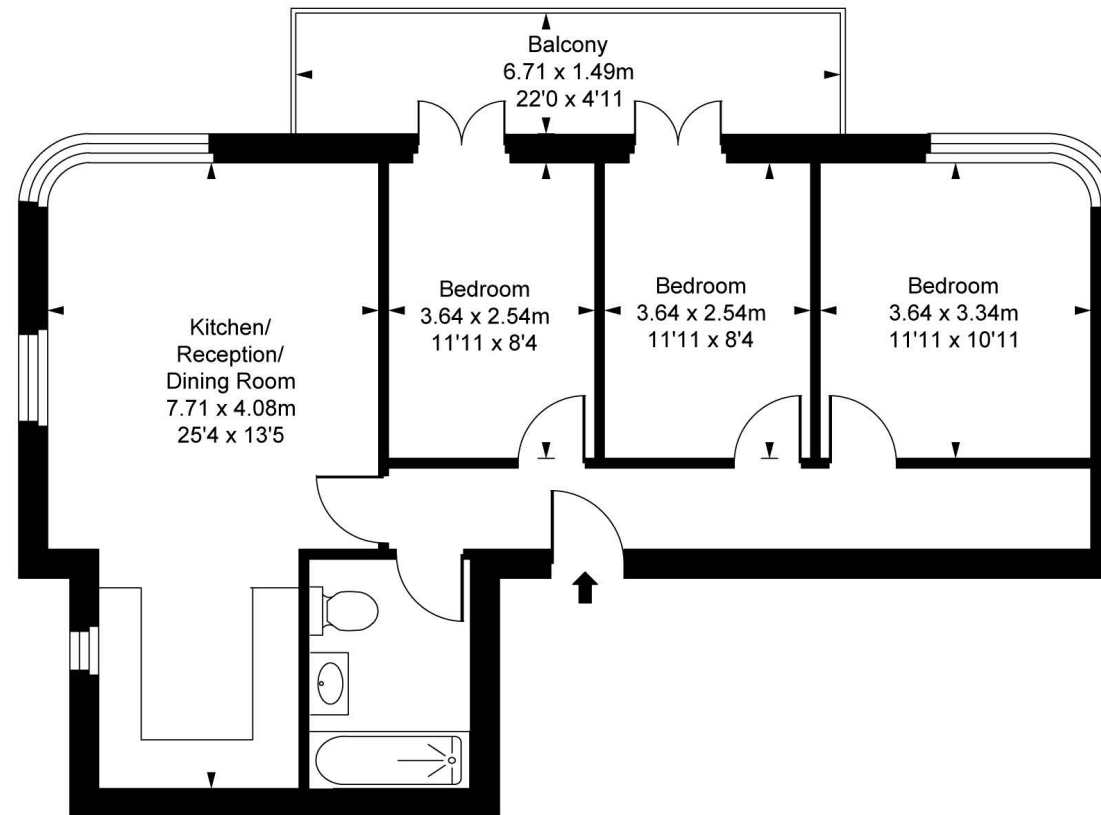
First Floor

ILLUSTRATION FOR IDENTIFICATION PURPOSES ONLY  
ALL MEASUREMENTS AND AREA FIGURES SUPPLIED BY OTHERS, ACCURACY IS NOT GUARANTEED.  
THIS PLAN MUST NOT BE REPRODUCED BY ANY OTHER PERSON WITHOUT PERMISSION



# Apartment Four:

Foyle Court,  
Hollyfield Road, KT5  
Approximate Gross Internal Area  
74.50 sq m / 802 sq ft



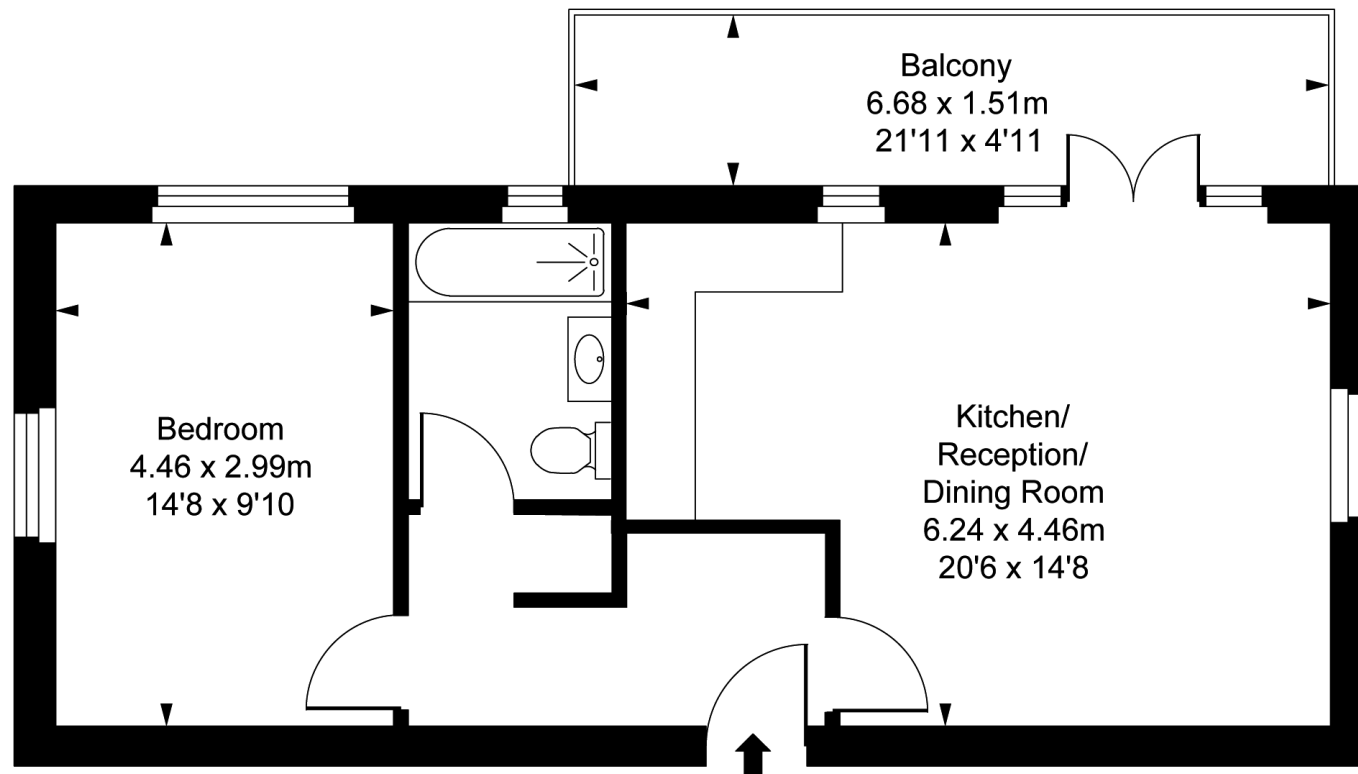
First Floor

ILLUSTRATION FOR IDENTIFICATION PURPOSES ONLY  
ALL MEASUREMENTS AND AREA FIGURES SUPPLIED BY OTHERS. ACCURACY IS NOT GUARANTEED.  
THIS PLAN MUST NOT BE REPRODUCED BY ANY OTHER PERSON WITHOUT PERMISSION



## Apartment Five:

Foyle Court,  
Hollyfield Road, KT5  
Approximate Gross Internal Area  
50.31 sq m / 542 sq ft



Second Floor

ILLUSTRATION FOR IDENTIFICATION PURPOSES ONLY  
ALL MEASUREMENTS AND AREA FIGURES SUPPLIED BY OTHERS, ACCURACY IS NOT GUARANTEED.  
THIS PLAN MUST NOT BE REPRODUCED BY ANY OTHER PERSON WITHOUT PERMISSION



# Apartment Six:

Foyle Court,  
Hollyfield Road, KT5  
Approximate Gross Internal Area  
74.50 sq m / 802 sq ft

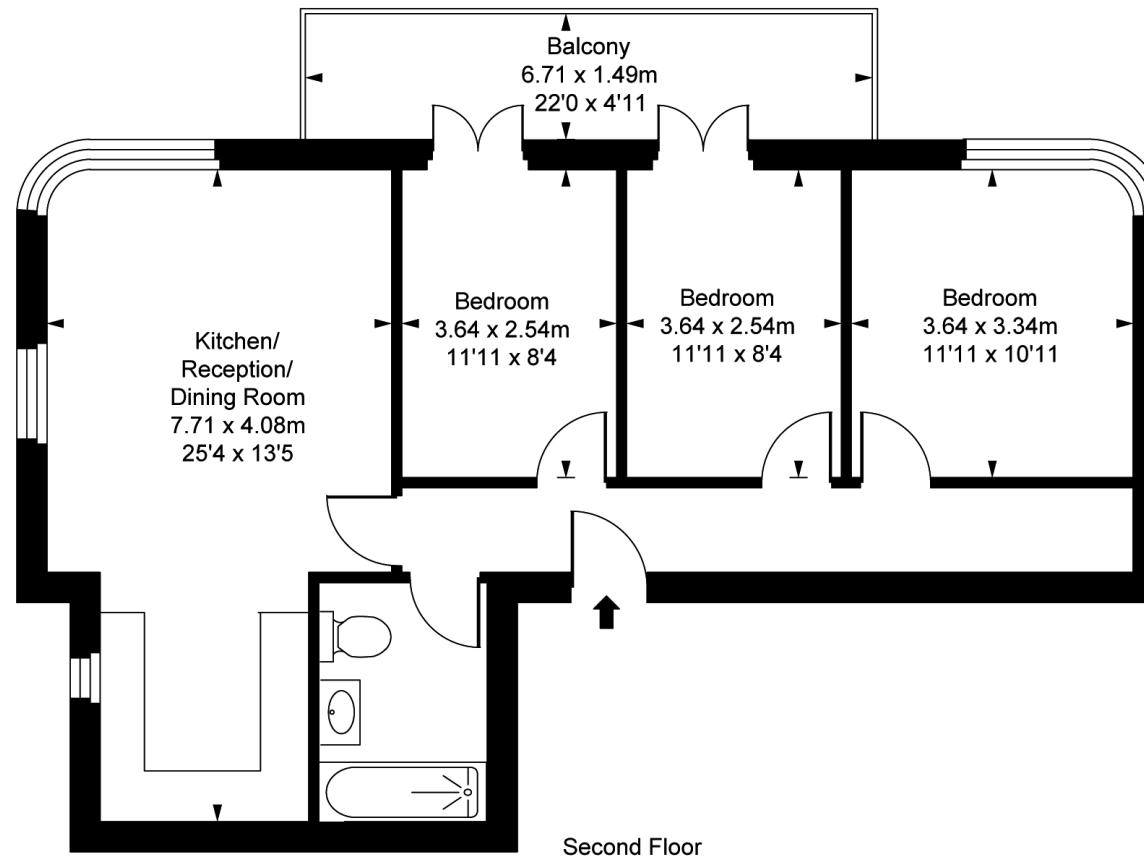
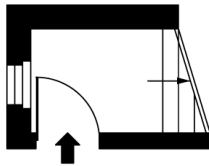


ILLUSTRATION FOR IDENTIFICATION PURPOSES ONLY  
ALL MEASUREMENTS AND AREA FIGURES SUPPLIED BY OTHERS. ACCURACY IS NOT GUARANTEED.  
THIS PLAN MUST NOT BE REPRODUCED BY ANY OTHER PERSON WITHOUT PERMISSION



# Apartment Seven:

Foyle Court,  
Hollyfield Road, KT5  
Approximate Gross Internal Area  
85.43 sq m / 920 sq ft



Second Floor Entrance  
Approximate Gross Internal Area  
2.65 sq m / 29 sq ft

Third Floor  
Approximate Gross Internal Area  
82.78 sq m / 891 sq ft

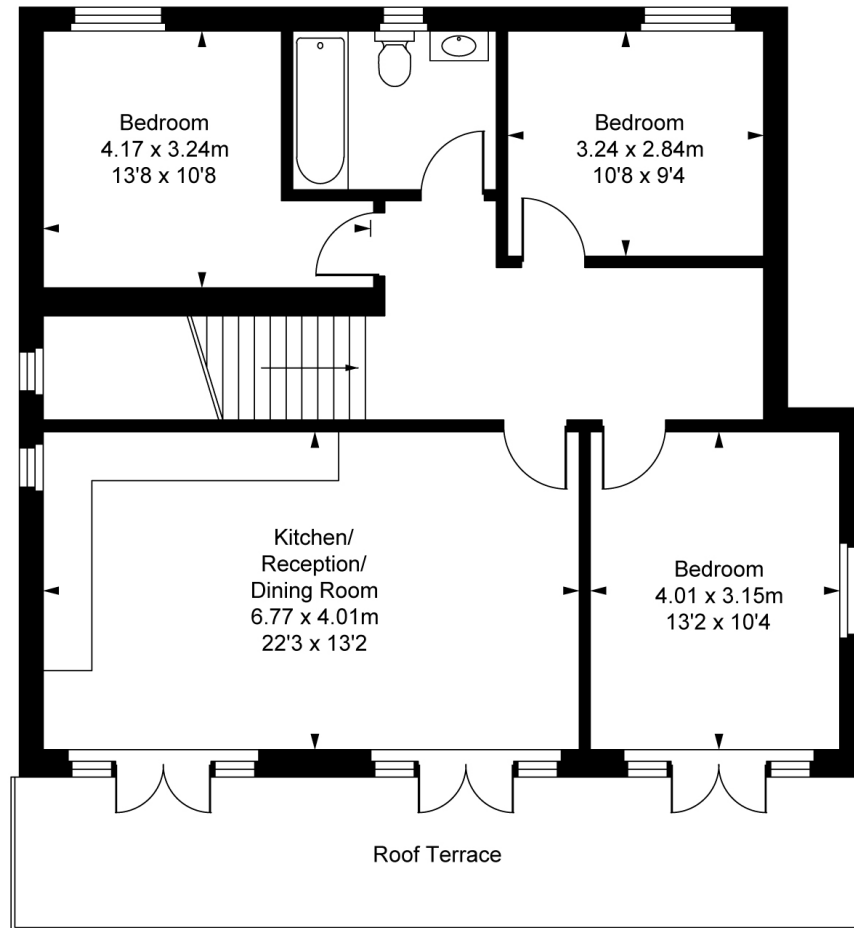


ILLUSTRATION FOR IDENTIFICATION PURPOSES ONLY  
ALL MEASUREMENTS AND AREA FIGURES SUPPLIED BY OTHERS. ACCURACY IS NOT GUARANTEED.  
THIS PLAN MUST NOT BE REPRODUCED BY ANY OTHER PERSON WITHOUT PERMISSION



# Specification:

- KITCHEN

- Howdens Satin finish units, soft close doors
- Composite worktops
- Under cabinet lighting
- Stainless steel sink with chrome mixer tap
- Work top 100mm upstand
- Induction hob, oven and extractor
- Integrated dishwasher and fridge freezer

- ENSUITE & BATHROOMS

- White sanitaryware
- Chrome taps and shower
- Walls and floors fully tiled, alcove in bath area.

- INTERNAL FINISHES

- Emulsion painted walls and ceilings
- Ceramic wall and floor tiles in bathrooms
- Laminate flooring to kitchen and living area

## ELECTRICS/LIGHTING

- LED light fittings to living room/kitchen/bathroom/hall
- TV, BT and Satellite points
- Brushed Chrome electrical faceplates throughout .

## BEDROOMS

- Carpets to all bedrooms

## GENERAL/SECURITY

- Cycle storage Racks
- Video entry to all apartments



## Price List:

Apartment	Floor	Size (M)	Size (Sq ft)	Beds	Amenity (M)	Asking Price
1	Ground	50.31	542	1	10	£399,950
2	Ground	74.5	802	3	10	£610,000
3	First	50.31	542	1	10	£399,950
4	First	74.5	802	3	10	£610,000
5	Second	50.31	542	1	10	£399,950
6	Second	74.5	802	3	10	£620,000
7	Third	85.43	920	3	20	£660,000

All images & floorplans in this brochure are for illustration  
purposes only





S&B

Stack and Bonner

Land and New Homes