



2 Bedroom 1st Floor Maisonette Tudor Drive, Kingston Upon Thames. £375,000 Leasehold

2 Bedroom First Floor Maisonette in North Kingston with a private Garden and Garage
An exciting opportunity to secure a 2 bedroom maisonette to update and make it your own.

Private Entrance door with stairs leading to the 1st floor.

Door opening to the reception room with views over the leafy residential road of Tudor Drive.

The principal bedroom is situated to the rear of the property,
a further double bedroom to the front, and a family bathroom.

The kitchen has steps leading down to a pathway to the private garden and garage

Tudor Drive is a popular road, located in North Kingston,
with Royal Richmond Park just a short walk away.

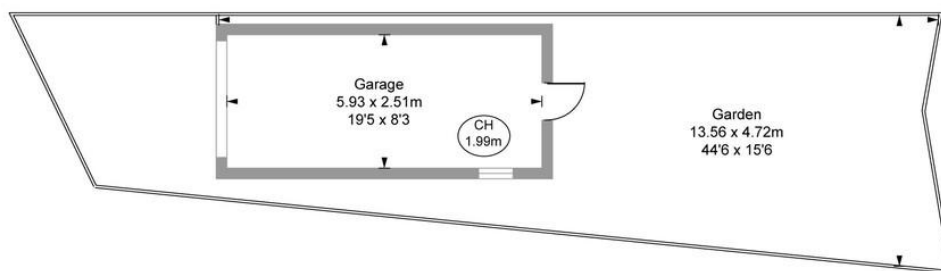
Offered to the market with no onward chain.

WWW.STACKANDBONNER.COM

020 8974 8844

sales@stackandbonner.com





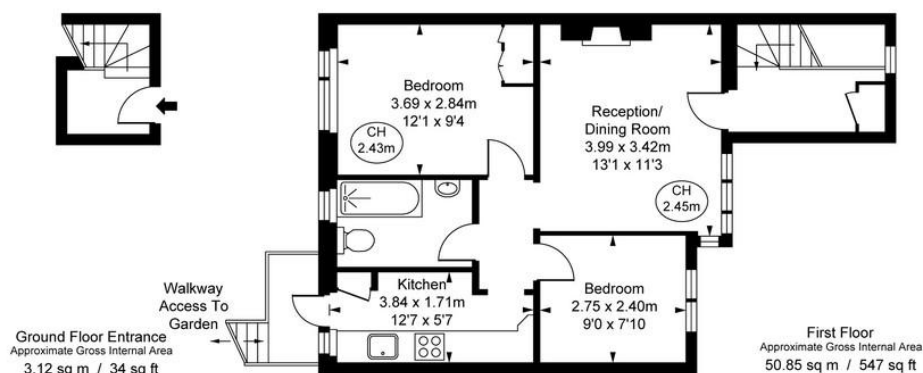
Tudor Drive,
Kingston Upon Thames, KT2

Approximate Gross Internal Area
53.97 sq m / 581 sq ft

Garage
14.88 sq m / 160 sq ft

Total Areas Shown On Plan
68.85 sq m / 741 sq ft

(CH = Ceiling Heights)



FULHAMPERFORMANCE
PRECISION YOU CAN TRUST

This plan is not to a given scale. A detailed layout plan with dimensions is available on request. All quoted measurements and areas are within 1% tolerance and have been prepared in accordance with industry standards as defined in the RICS Code of Measuring Practice © Fulham Performance

- 2 Bedroom Maisonette
- Opportunity to update and make it your own
- 1st Floor
- Reception Room
- 2 Bedrooms
- Bathroom
- Kitchen with steps down to a pathway to the private garden
- Leafy Residential Road in North Kingston
- Short Walk to Royal Richmond Park
- Chain Free
- Lease: 159 years remaining
- Ground Rent: £50 per annum
- Council Tax: Band D - £2,488.35 per annum