



3 Bedroom Semi-Detached House Littlefield Close, Kingston Upon Thames. £825,000 Freehold

An exclusive new development of just Two Semi Detached family homes in Littlefield Close, Kingston upon Thames.

House A – 3 bedroom family home offering 1,070 sq ft of internal living space with accommodation arranged over 3 floors.

Set in a residential cul-de-sac location, this architecturally designed brand new semi-detached home has been built with a fusion of Victorian style features and modern designs. Open plan spacious reception room with a high specification designer kitchen and French doors opening to the landscaped rear garden.

3 bedrooms, 2 luxury bathrooms and a downstairs cloakroom.

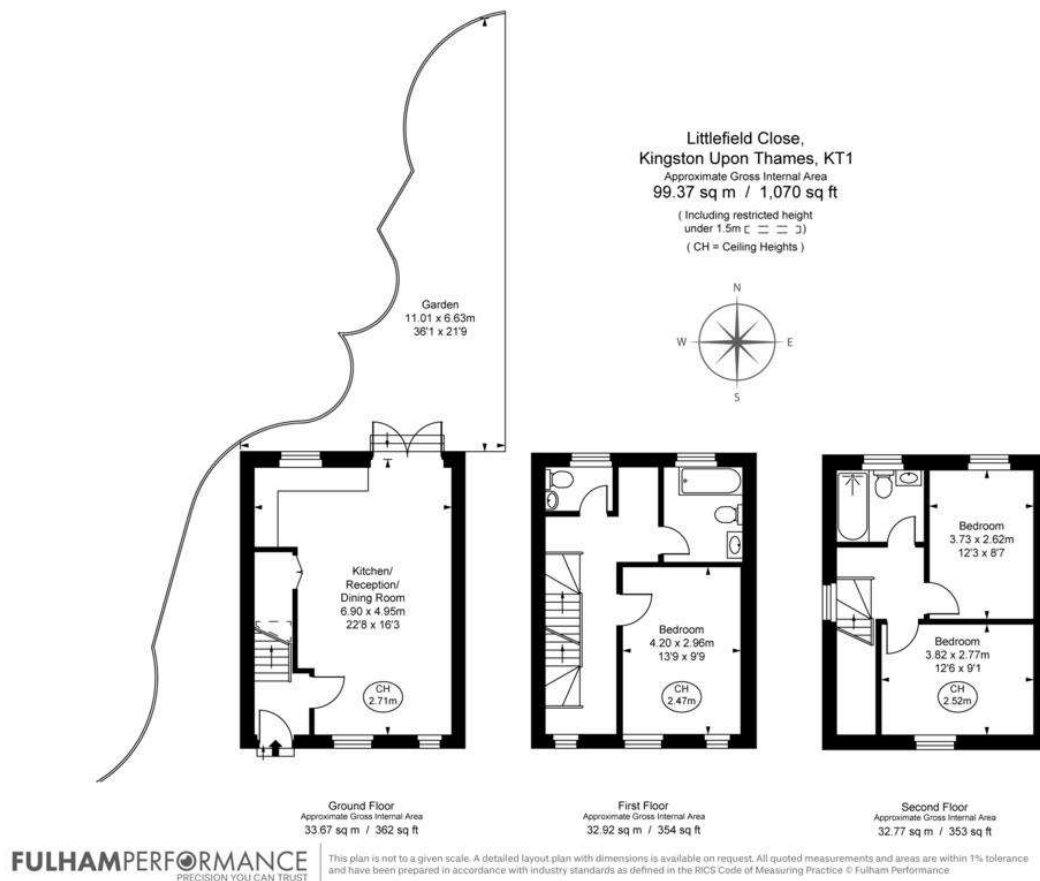
Kingston upon Thames has everything, with glorious parkland and the River Thames on the doorstep, a flourishing community, fantastic local amenities and excellent schools including Tiffin and Kingston Grammar Schools.

and fast and easy commute to the capital of London from Kingston upon Thames mainline station.

WWW.STACKANDBONNER.COM

020 8974 8844

sales@stackandbonner.com



- Brand New, 3 Bedroom Semi-Detached Family Home
- Designed with a fusion of Victorian features and modern designs
- Accommodation arranged over 3 floors
- Open Plan Living / Kitchen / Dining Room
- Shaker Style Kitchen with Wood Worktops
- French Doors opening to the private garden
- 2 Bathrooms and a separate WC
- 1,070 sq ft
- 10 year new build warranty
- Please note – all images indicative and for illustration purposes.