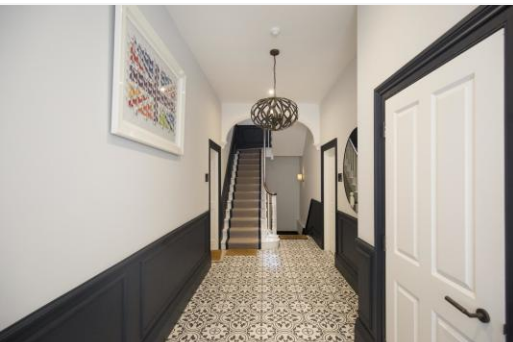


S&B



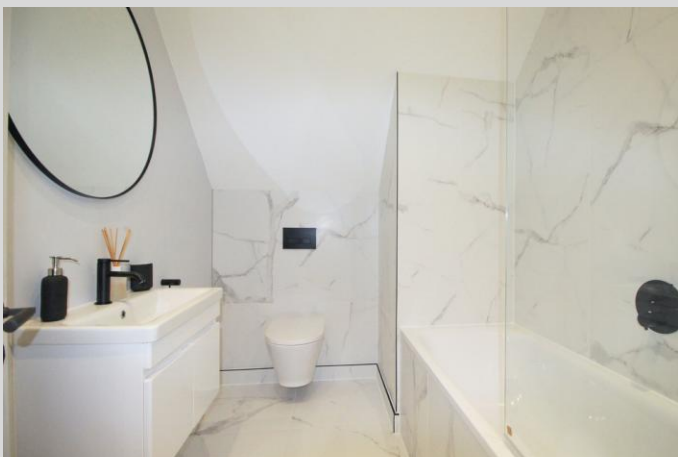
Two Double Bedroom Penthouse Apartment Church Grove Hampton Wick

£650,000 Share of Freehold

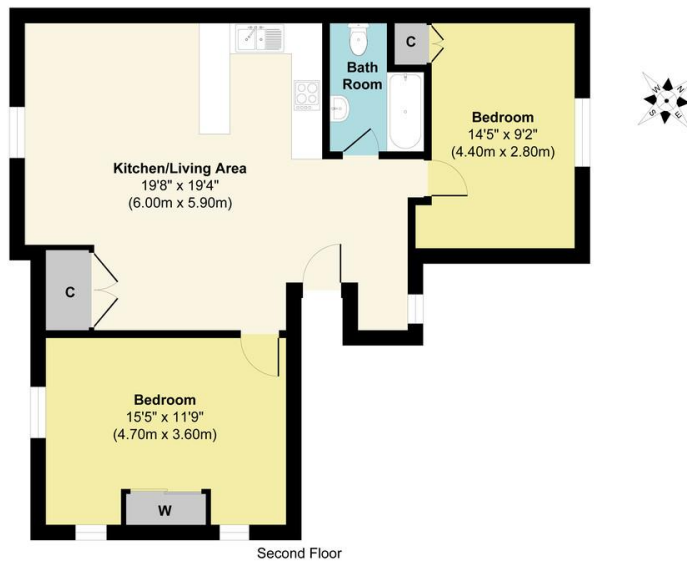
WWW.STACKANDBONNER.COM

020 8974 8844

sales@stackandbonner.com



Fairlight House



Approx. Gross Internal Floor Area 793 sq. ft / 73.67 sq. m

This Plan is for Guidance only. Not drawn to scale unless stated. Window and door openings are approximate. The services, system and appliances shown have not been tested and no guarantee as to their operability and efficiency can be given. Whilst every care is taken in the preparation of this plan, please check all dimensions, shapes and compass bearings before making decisions reliant upon them.
Produced by designimperial.com

- 2 Bedroom Penthouse Apartment opposite Royal Bushy Park
- Stunning Victorian Building
- Elegant and Sophisticated Entrance Hallway
- Character Features including Original Beams
- Open Plan Living/Kitchen Dining Room with bespoke Kitchen
- 2 Double Bedrooms