

S&B



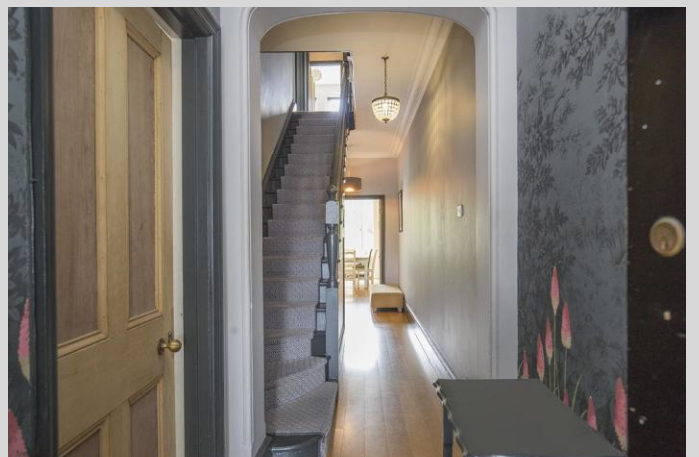
5 Bedroom Edwardian Family Home Geneva Road Kingston Upon Thames, KT1 2TW

£1,550,000 Freehold

WWW.STACKANDBONNER.COM

020 8974 8844

sales@stackandbonner.com



Geneva Road, KT1



Approx. Gross Internal Floor Area 2313 sq. ft / 214.86 sq. m

This Plan is for Guidance only. Not drawn to scale unless stated. Window and door openings are approximate. The services, system and appliances shown have not been tested and no guarantee as to their operability and efficiency can be given. Whilst every care is taken in the preparation of this plan, please check all dimensions, shapes and compass bearings before making decisions reliant upon them.

Produced by designimperial.com

- 5 Bedroom Edwardian Family Home
- 2,313 sq ft
- 2 Reception Rooms
- Kitchen/Dining/Family Room
- Utility Room
- 3 Bathrooms