

S&B



5 Bedroom Edwardian Family Home located in Kingston Upon Thames. £1,550,000 Freehold

Impressive and well presented, 5 Bedroom Edwardian Semi-Detached Family Home.

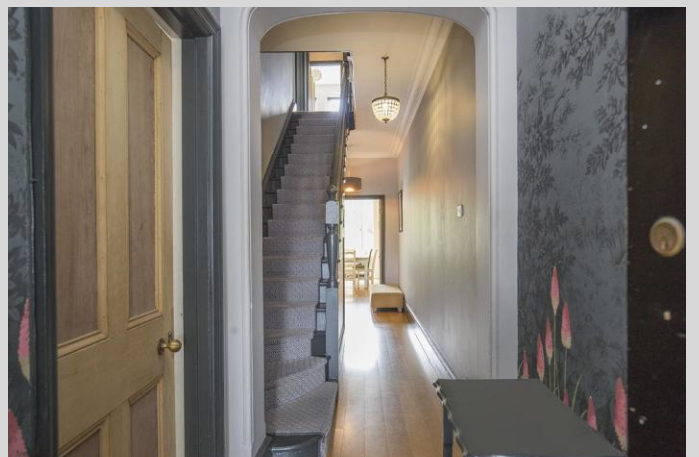
Located in a prime leafy road in a quiet residential area of Kingston upon Thames
This exquisite property boasts 2,313 sq ft of internal space, has an abundance of character features with bespoke finishings, stripped doors and double glazed windows.

The large and Secluded rear garden has a raised patio/terrace area,
the garden is laid to lawn and beautifully landscaped with Mature Trees and shrubs
Driveway parking to the front.

WWW.STACKANDBONNER.COM

020 8974 8844

sales@stackandbonner.com



Geneva Road, KT1



Approx. Gross Internal Floor Area 2313 sq. ft / 214.86 sq. m

This Plan is for Guidance only. Not drawn to scale unless stated. Window and door openings are approximate. The services, system and appliances shown have not been tested and no guarantee as to their operability and efficiency can be given. whilst every care is taken in the preparation of this plan, please check all dimensions, shapes and compass bearings before making decisions reliant upon them.

Produced by designimperial.com

- 5 Bedroom Edwardian Family Home
- 2,313 sq ft
- 2 Reception Rooms
- Kitchen/Dining/Family Room
- Utility Room
- 3 Bathrooms