

S&B



2 Bedroom Victorian Cottage Ferry Road, Twickenham. £800,000 Freehold

A unique and individual 2 bedroom Victorian cottage, situated off a quiet leafy residential road in a conservation area near Twickenham Riverside. This charming property is presented to an exceptionally high standard and with an abundance of character features.

To the front of the property there is a pretty cottage garden leading to the entrance doorway. The ground floor consists of a beautiful reception room, with a feature fireplace, which leads through to the dining room with bespoke understairs cupboards and drawers, and door to the staircase.

The sunny kitchen overlooks the garden, there is also an office area, ample storage space and a modern bathroom with a feature stoneware basin unit.

On the first floor are 2 double bedrooms, both with feature fireplaces and fitted wardrobes.

Loft room, boarded and with natural light.

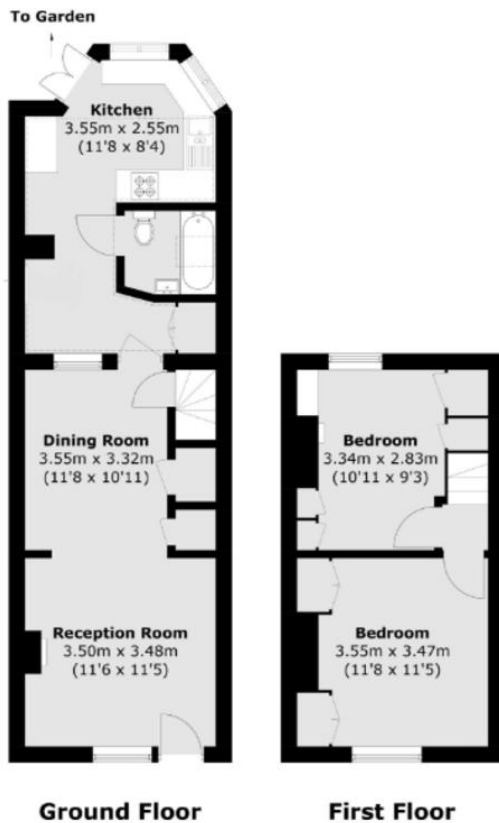
This delightful property is accessed just off Ferry Road via a footpath and has a private sunny rear cottage garden.

WWW.STACKANDBONNER.COM

020 8974 8844

sales@stackandbonner.com





Total area (approx.): 68.8 sq. m (740.5 sq. ft)

Whilst every attempt has been made to ensure the accuracy of the floor plan contained here, measurements of doors, windows, rooms and any other items are approximate and no responsibility is taken for any error, omission, or mis-statement. This plan is for illustrative purposes only and should be used as such by any prospective purchaser. The services, systems and appliances shown have not been tested and no guarantee as to their operability or efficiency can be given

- 2 Bedroom Victorian Cottage
- Abundance of Character Features
- Ample Storage Throughout
- 2 Bedrooms with Feature Fireplaces and Fitted Wardrobes
- Double Glazed Sash Windows
- Private sunny rear cottage garden
- Potential to Extend STPP
- Located in a quiet Conservation area close to Twickenham Riverside
- Within a short walk of Twickenham Town Centre
- Council Tax: Band C - £2,012.14 per annum