

S&B



4 Bedroom Semi-Detached Family Home Park Road, Kingston Upon Thames. £999,999 Freehold

An exclusive 4 bedroom high specification family home.

This attractive property is situated just moments from Richmond Park.

Built just 6 years ago, the thoughtful design sympathetically reflects the character of existing period homes and comprises, modern and spacious living arranged over 3 floors.

Porcelain floors beautifully reflect sunlight entering the room and Led downlights highlight the quartz worktops, Aino German units and Neff appliances. Carefully chosen paint finishes complement walnut doors throughout the property.

Fixtures and fittings are of an excellent standard.

An elegant staircase leads to the first floor containing a principal bedroom with ensuite bathroom and full width balcony, further double bedroom, family bathroom and a utility room.

Upstairs there are two further double bedrooms and a luxury bathroom.

Allocated off road parking space.

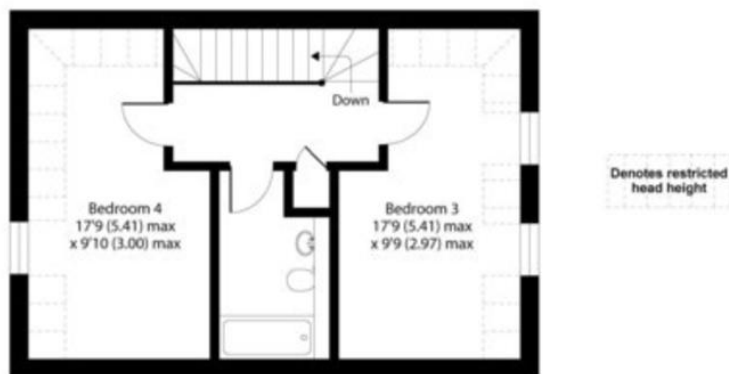
WWW.STACKANDBONNER.COM

020 8974 8844

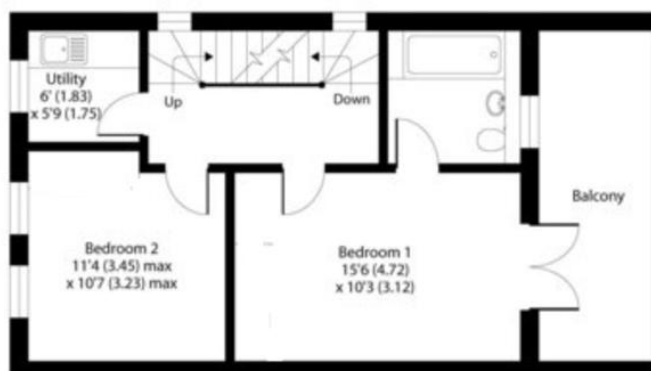
sales@stackandbonner.com



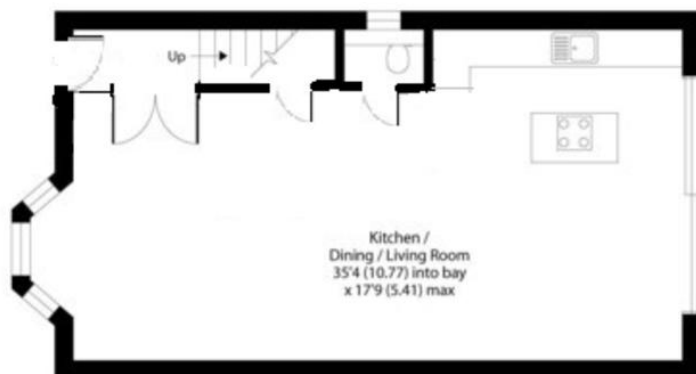
APPROX. GROSS INTERNAL FLOOR AREA 1473 SQ FT 136.8 SQ METRES
(EXCLUDES RESTRICTED HEAD HEIGHT)



SECOND FLOOR



FIRST FLOOR



GROUND FLOOR

This floor plan was constructed using measurements provided to Niche Communications by a third party.

- Stunning 4 Bedroom Family Home
- 1,473 sq ft of internal living space
- Open Plan Kitchen/Dining Room
- Utility Room & Cloakroom
- Principal Bedroom (En-Suite) With Full Width Balcony
- Two Luxury Bathrooms
- Front and Rear Gardens
- Excellent Build Specification
- Built just 6 years ago
- Allocated Off Road Parking Space