

# S&B



## 1 Bedroom Apartment Ashley Downs, Epsom. £375,000 Leasehold

Unit 5 - 1 Bedroom Apartment - 2nd Floor - 655 sq ft

Ashley Downs, is an exclusive development of just 6 impressive apartments in Epsom.

Each property is modern, unique and finished to the highest level with exceptional touches.

Ashley Downs, is an exclusive development of just 6 impressive apartments in Epsom. Each property is modern, unique and finished to the highest level with exceptional touches. Epsom & Ewell is blessed with a plethora of beautiful green spaces, which are ideal for giving the children a run around or taking the dogs for a walk. Here are just a few: Nonsuch Park, The Hogsmill, Epsom Downs, Horton Park, Ewell Court Park, Alexandra Recreation Ground, Epsom Common Local Nature Reserve and Rosebery Park.

There are also various golf clubs in the area, including Epsom Downs, Horton, Walton on the Hill and of course the famous RAC Club and Beaverbrook.

The borough boasts numerous Ofsted outstanding rated schools, which attract many people to the area.

Roseberry and Stamford Green Schools both of which were awarded the highest rating.

Historic Epsom Town Centre offers an array of high street shops and independent stores, the Ashley Shopping Centre, and an abundance of local coffee shops and restaurants.

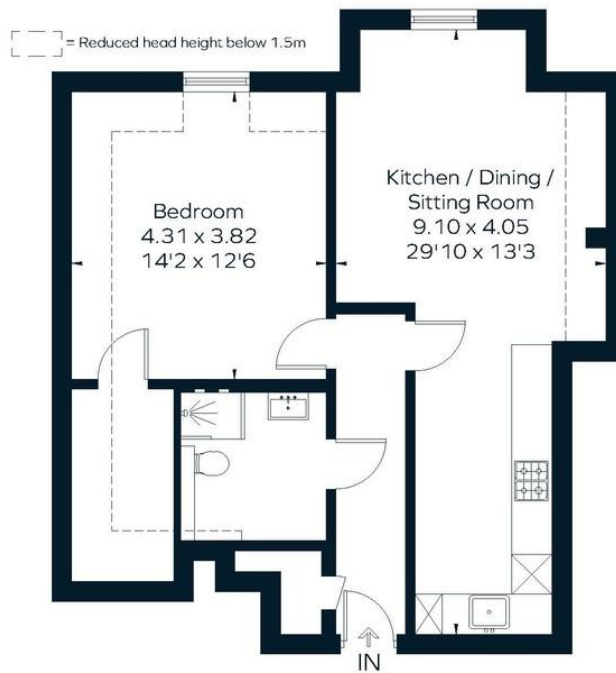
[WWW.STACKANDBONNER.COM](http://WWW.STACKANDBONNER.COM)

020 8974 8844

[sales@stackandbonner.com](mailto:sales@stackandbonner.com)



Approximate Floor Area = 60.9 sq m / 655 sq ft



Second Floor



This floor plan has been drawn in accordance with RICS Property Measurement 2nd edition.  
All measurements, including the floor area, are approximate and for illustrative purposes only. @fourwalls-group.com #65586

- Brand New 1 Bedroom Apartment
- 2nd Floor
- 655 sq ft
- Luxury Bathroom
- Allocated Parking Space
- Cycle Storage
- 999 year lease
- Service Charge: £600 per annum [approx]
- 10 year new build warranty