



9 OAK HILL GROVE

SURBITON KT6 6DS



All images & floorplans in this brochure are for illustration purposes only



Surbiton:

Surbiton is an affluent riverside town in South West London. It's a very vibrant location with a wide range of shops, cafes, excellent pubs and bars and award-winning restaurants. There is also a splendid selection of green spaces and parks just moments away. It should also be mentioned that it has the highly regarded Surbiton Farmers' Market on the third Saturday of every month. Surbiton is sumptuously positioned alongside the Thames and accordingly, walking, running, cycling and water sports are all on your doorstep.

The town also boasts the renowned Surbiton Racket and Fitness Club, established in 1881, which hosts the annual International Tennis Federation Surbiton Trophy which precedes the Wimbledon Championship. Surbiton is perfectly positioned with Hampton Court Palace, Bushy Park and Richmond Park and Kingston's Cosmopolitan Town Centre within easy reach. With an excellent selection of schools, a vibrant local community and trains taking only 16 minutes to Waterloo, the area has become one of the most desirable in South West London.





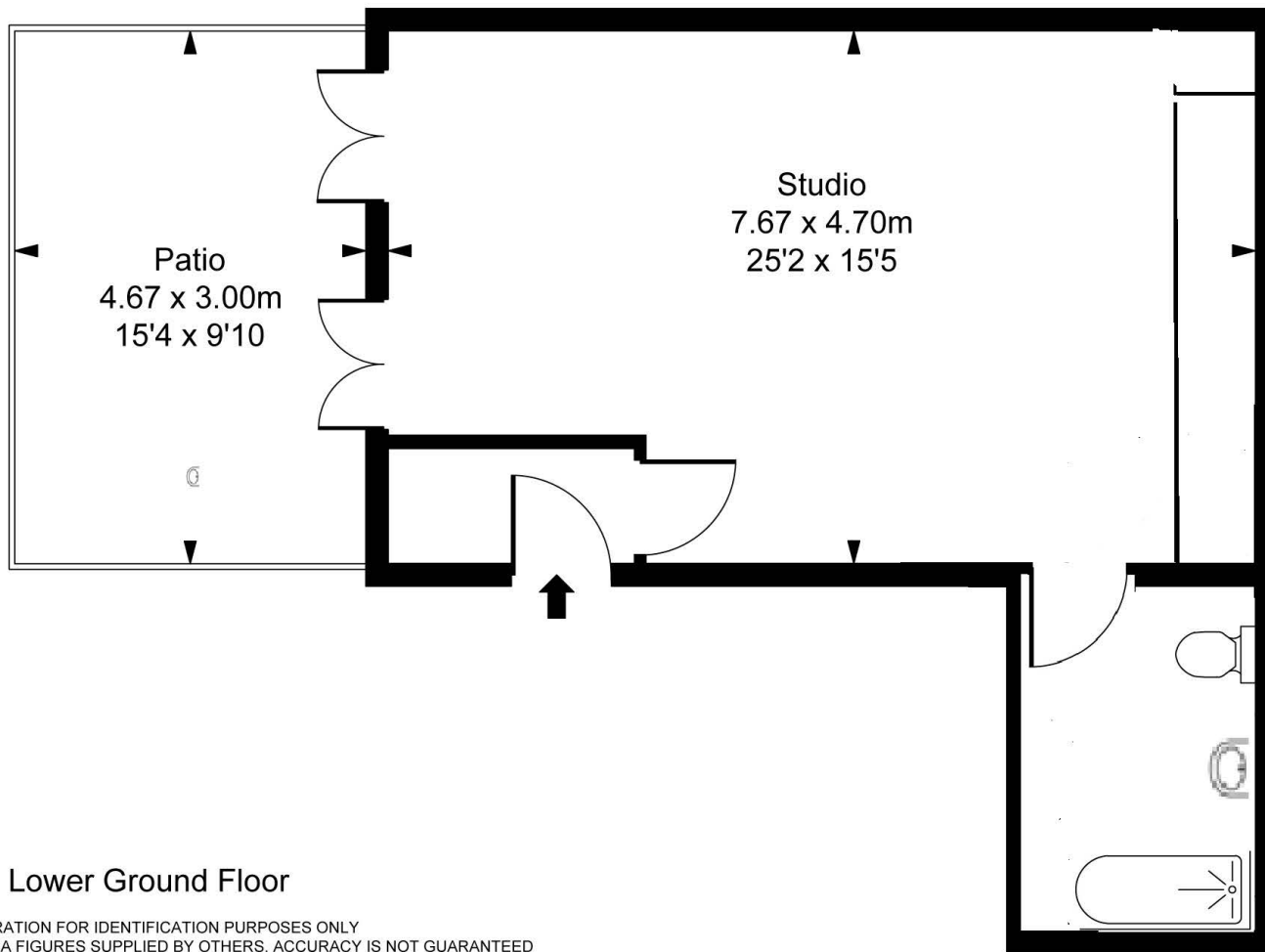
All images & floorplans in this brochure are for illustration purposes only



All images & floorplans in this brochure are for illustration purposes only

Apartment One:

Oak Hill Grove,
Surbiton, KT6
Approximate Gross Internal Area
40.00 sq m / 431 sq ft



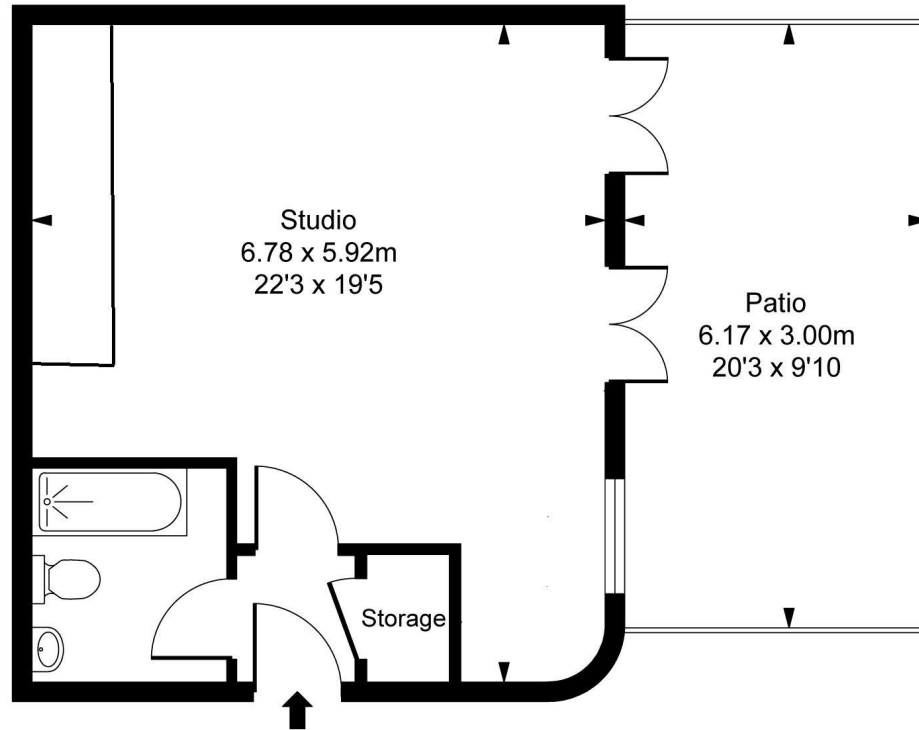
Lower Ground Floor

ILLUSTRATION FOR IDENTIFICATION PURPOSES ONLY
ALL MEASUREMENTS AND AREA FIGURES SUPPLIED BY OTHERS, ACCURACY IS NOT GUARANTEED
THIS PLAN MUST NOT BE REPRODUCED BY ANY OTHER PERSON WITHOUT PERMISSION

All images & floorplans in this brochure are for illustration purposes only

Apartment Two:

Oak Hill Grove,
Surbiton, KT6
Approximate Gross Internal Area
40.00 sq m / 431 sq ft



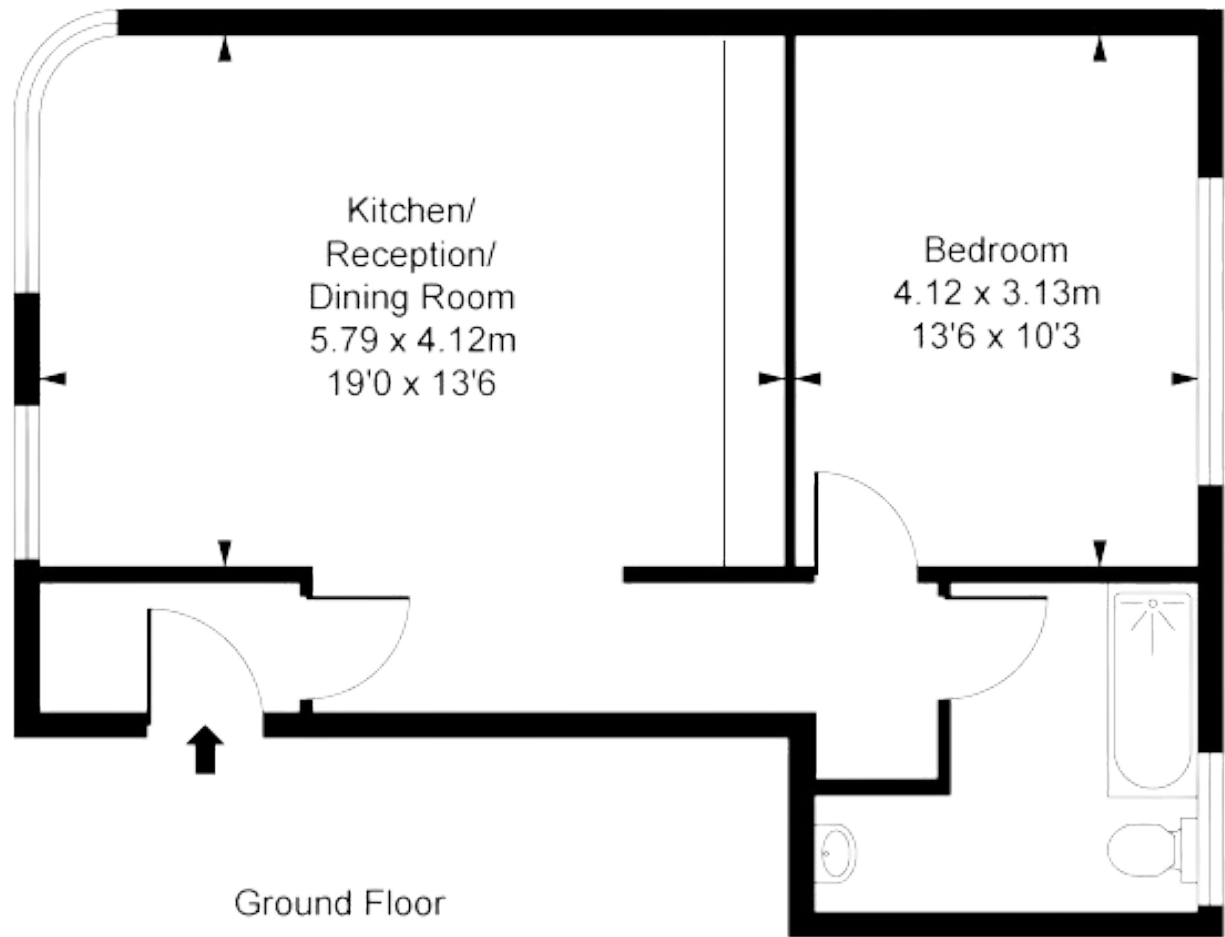
Lower Ground Floor

ILLUSTRATION FOR IDENTIFICATION PURPOSES ONLY
ALL MEASUREMENTS AND AREA FIGURES SUPPLIED BY OTHERS, ACCURACY IS NOT GUARANTEED.
THIS PLAN MUST NOT BE REPRODUCED BY ANY OTHER PERSON WITHOUT PERMISSION

Apartment Three:

Oak Hill Grove,
Surbiton, KT6

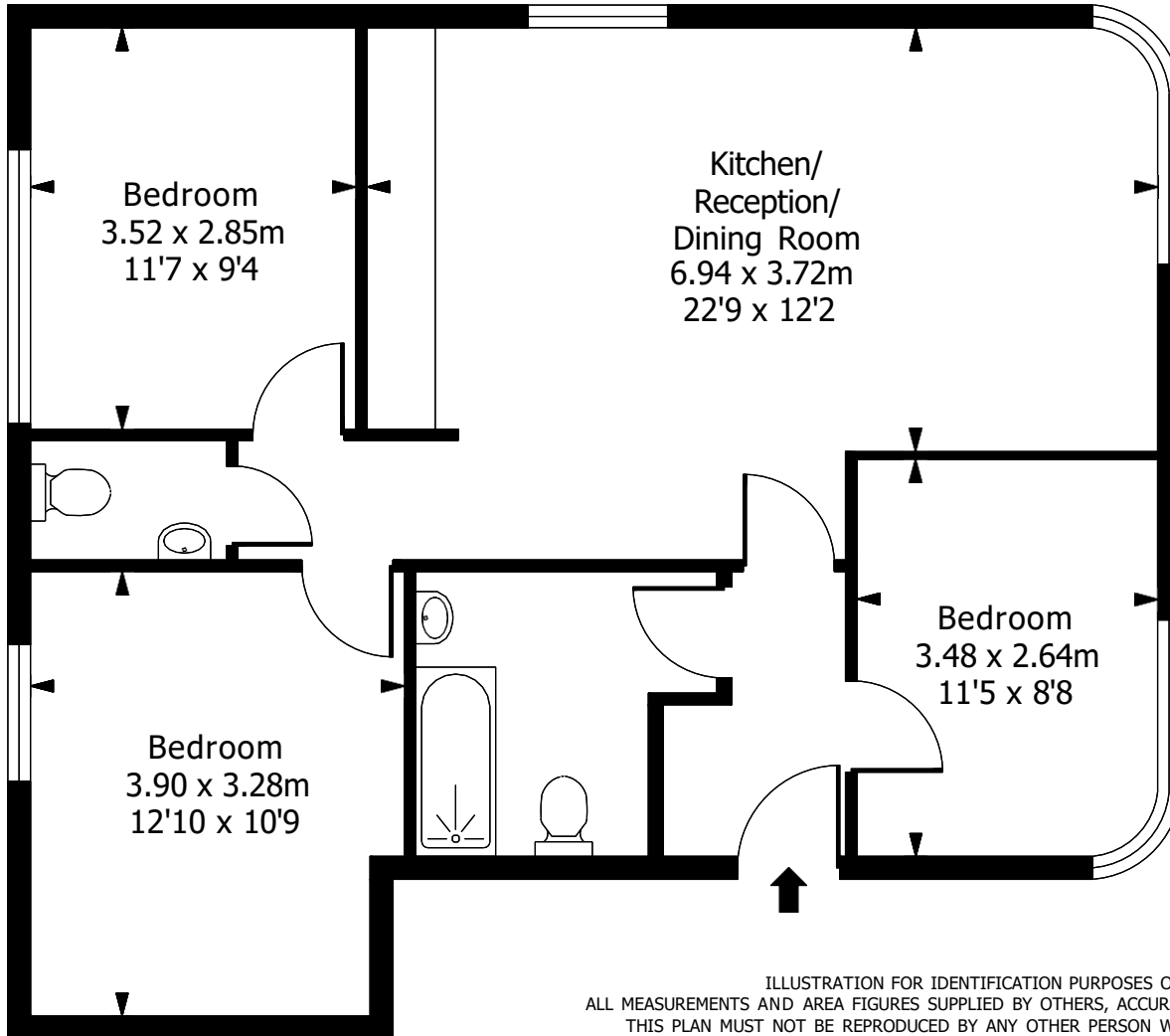
Approximate Gross Internal Area
52 sq m / 560 sq ft



Ground Floor

ILLUSTRATION FOR IDENTIFICATION PURPOSES ONLY
ALL MEASUREMENTS AND AREA FIGURES SUPPLIED BY OTHERS, ACCURACY IS NOT GUARANTEED
THIS PLAN MUST NOT BE REPRODUCED BY ANY OTHER PERSON WITHOUT PERMISSION

Apartment Four:



Oak Hill Grove,
Surbiton, KT6
Approximate Gross Internal Area
76.5 sq m / 823 sq ft



Ground Floor

ILLUSTRATION FOR IDENTIFICATION PURPOSES ONLY
ALL MEASUREMENTS AND AREA FIGURES SUPPLIED BY OTHERS, ACCURACY IS NOT GUARANTEED.
THIS PLAN MUST NOT BE REPRODUCED BY ANY OTHER PERSON WITHOUT PERMISSION

Apartment Five:

Oak Hill Grove,
Surbiton, KT6

Approximate Gross Internal Area
52 sq m / 560 sq ft

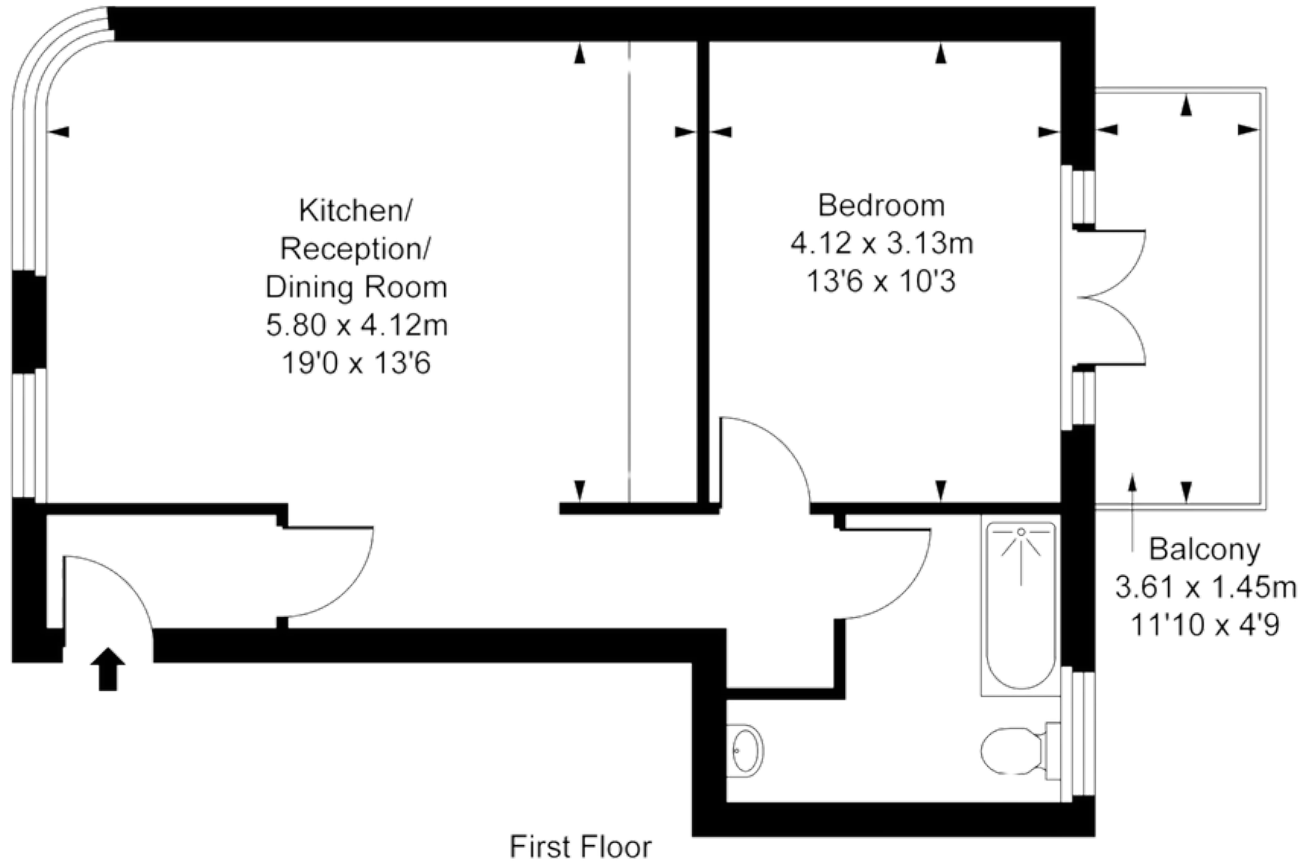


ILLUSTRATION FOR IDENTIFICATION PURPOSES ONLY
ALL MEASUREMENTS AND AREA FIGURES SUPPLIED BY OTHERS, ACCURACY IS NOT GUARANTEED.
THIS PLAN MUST NOT BE REPRODUCED BY ANY OTHER PERSON WITHOUT PERMISSION

All images & floorplans in this brochure are for illustration purposes only

Apartment Six:



Oak Hill Grove,
Surbiton, KT6
Approximate Gross Internal Area
77 sq m / 829 sq ft

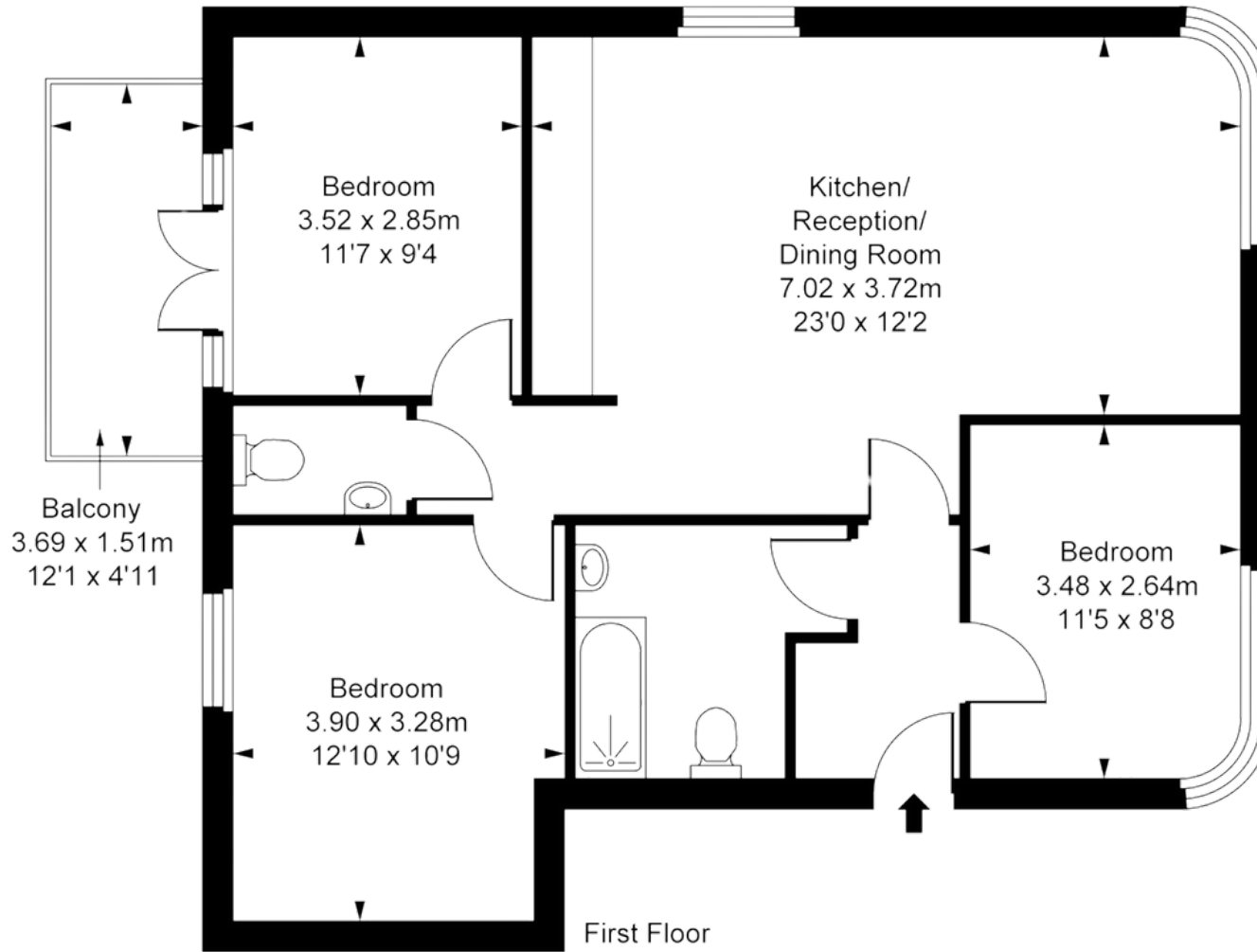


ILLUSTRATION FOR IDENTIFICATION PURPOSES ONLY
ALL MEASUREMENTS AND AREA FIGURES SUPPLIED BY OTHERS, ACCURACY IS NOT GUARANTEED.
THIS PLAN MUST NOT BE REPRODUCED BY ANY OTHER PERSON WITHOUT PERMISSION

All images & floorplans in this brochure are for illustration purposes only

Apartment Seven:

Oak Hill Grove,
Surbiton, KT6

Approximate Gross Internal Area
84.00 sq m / 904 sq ft

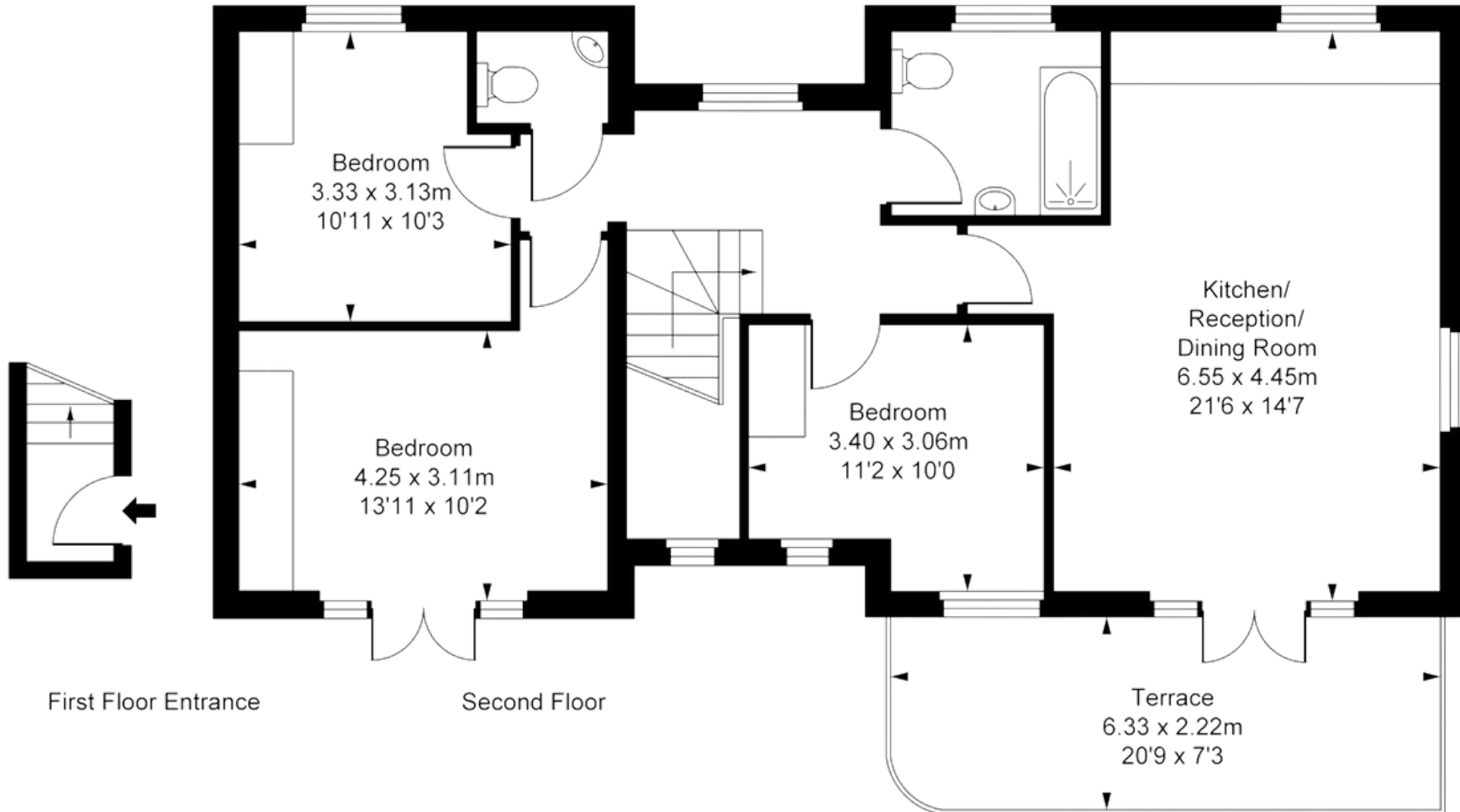


ILLUSTRATION FOR IDENTIFICATION PURPOSES ONLY
ALL MEASUREMENTS AND AREA FIGURES SUPPLIED BY OTHERS. ACCURACY IS NOT GUARANTEED.
THIS PLAN MUST NOT BE REPRODUCED BY ANY OTHER PERSON WITHOUT PERMISSION

All images & floorplans in this brochure are for illustration purposes only

Specification:

- KITCHEN

- Howdens Satin finish units, soft close doors
- Composite worktops
- Under cabinet lighting
- Stainless steel sink with chrome mixer tap
- Work top 100mm upstand
- Induction hob, oven and extractor
- Integrated dishwasher and fridge freezer

- ENSUITE & BATHROOMS

- White sanitaryware
- Chrome taps and shower
- Walls and floors fully tiled, alcove in bath area.

- INTERNAL FINISHES

- Emulsion painted walls and ceilings
- Ceramic wall and floor tiles in bathrooms
- Laminate flooring to kitchen and living area

ELECTRICS/LIGHTING

- LED light fittings to living room/kitchen/bathroom/hall
- TV, BT and Satellite points
- Brushed Chrome electrical faceplates throughout .

BEDROOMS

- Carpets to all bedrooms

GENERAL/SECURITY

- Cycle storage Racks
- Video entry to all apartments



Kitchen Style

All images & floorplans in this brochure are for illustration purposes only

Price List:

Flat	Floor	Size (M)	Size (Sq ft)	Beds	Amenity (M)	Asking Price
1	L/G	40	431	Studio	14	£285,000
2	L/G	40	431	Studio	18.5	RESERVED
3	G	52	560	1	n/a	£400,000
4	G	76.5	823	3	n/a	£600,000
5	1st	52	560	1	5.5	RESERVED
6	1st	77	829	3	5.5	£625,000
7	2nd	84	904	3	13.5	RESERVED



S & B

Stack and Bonner

020 8974 8844

sales@stackandbonner.com

www.stackandbonner.com