



4 TRURO CLOSE, DARLINGTON, DL1 2XF

Offers In The Region Of £210,000

A delightful three-bedroom detached property situated in the sought after Haughton area of Darlington. This charming home features a cozy lounge to the front, providing a perfect space for relaxation, while the spacious kitchen/diner at the rear offers a versatile area for family meals and entertaining. The Kitchen itself is high in quality and features a range of units and workspace. The ground floor is further enhanced by a convenient utility room and a WC. Upstairs, the first floor hosts three double bedrooms, including a master bedroom complete with an en-suite shower room for added privacy and comfort. A modern family bathroom with a bath and shower is also included. For more information, please contact the sales team on 01325 488433.



ENTRANCE HALLWAY

LOUNGE

KITCHEN/DINER

UTILITY

GROUND FLOOR WC

FIRST FLOOR

BEDROOM ONE

BEDROOM TWO

BEDROOM THREE

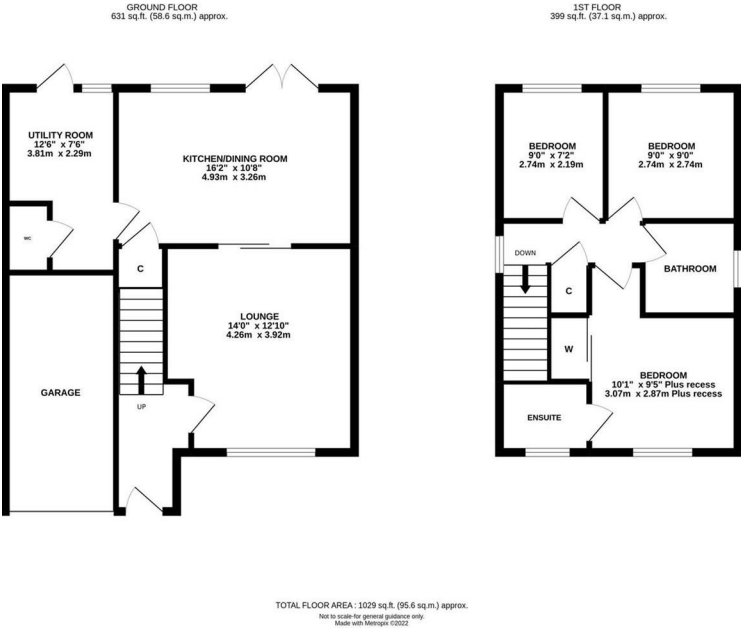
BATHROOM/WC

EN SUITE

EXTERNALLY

Energy Efficiency Rating		
	Current	Potential
Very energy efficient - lower running costs		
(92 plus) A		
(81-91) B		
(69-80) C		
(55-68) D		
(39-54) E		
(21-38) F		
(1-20) G		
Not energy efficient - higher running costs		
England & Wales	EU Directive 2002/91/EC	

Environmental Impact (CO ₂) Rating		
	Current	Potential
Very environmentally friendly - lower CO ₂ emissions		
(92 plus) A		
(81-91) B		
(69-80) C		
(55-68) D		
(39-54) E		
(21-38) F		
(1-20) G		
Not environmentally friendly - higher CO ₂ emissions		
England & Wales	EU Directive 2002/91/EC	



YOUR HOME IS AT RISK IF YOU DO NOT KEEP UP REPAYMENTS ON A MORTGAGE OR OTHER LOANS SECURED ON IT.

These particulars do not constitute, nor constitute part of, an offer or contract. An intending purchaser must satisfy himself by inspection or otherwise as to the correctness of each of the statements contained in these particulars. The vendor does not make or give, and neither Ann Cordey, or any other person in their employment has any authority to make or give any representation or warranty whatever in relation to this property. All measurements are approximate.

