

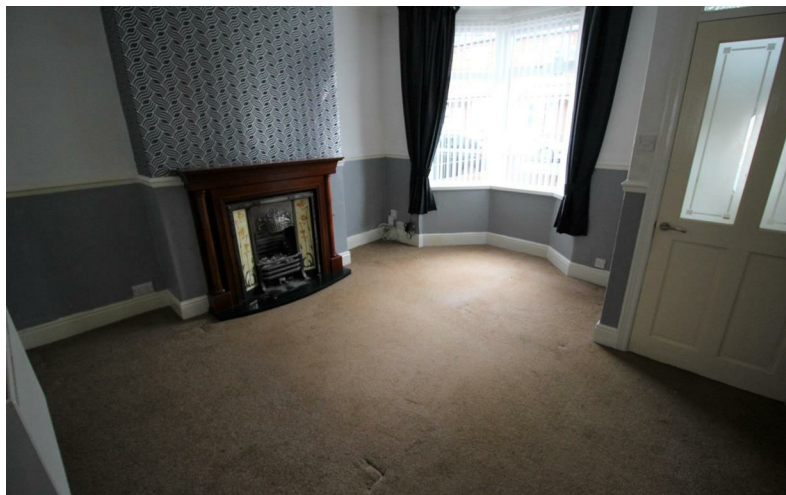


18 VANCOUVER STREET, DARLINGTON, COUNTY DURHAM, DL3 6HN

Offers In The Region Of £103,000

A successful let for the current owner, and offered for sale with a sitting tenant paying £500.00 per month. Vancouver Street is a traditional TWO BEDROOMED terraced property, boasting accessible attic space and the desired forecourt.

Situated in the popular Denes area of Darlington and having access to the local schools, shops and amenities.



The property is warmed by gas central heating and is fully double glazed. A brief summary of the accommodation is as follows: Entrance vestibule, Lounge and Kitchen/Diner.

To the first floor there are TWO bedrooms and the bathroom/WC. A fixed staircase to to attic makes it convinient to access storage.

Externally the forecourt is enclosed with a brick built wall and the courtyard to rear is paved with an up and over garage door to the service lane.

ENTRANCE VESTIBULE

A UPVC door opens into the vestibule, which in turn leads into the Lounge area.

LOUNGE

14'07" x 13'07" (4.45m x 4.14m)

A sizeable reception room having a UPVC bay window to the front aspect and two alcoves to chimney breast, and having a gas fire.

KITCHEN/DINER

Fitted with a range of wall, floor and drawer cabinets which have been painted in a green tone, with complimenting worksurfaces and a textured sink unit. The integrated appliances includes an electric oven and gas hob and in addition there is plumbing for an automatic washing machine.

The room has a UPVC window to the rear aspect and door leading out to the court yard.

FIRST FLOOR

LANDING

Leading to both bedrooms and the bathroom/WC - with a fixed staircase to the attic area.

BEDROOM ONE

11'00" x 9'08" (3.35m x 2.95m)

The prinicipal bedroom has a UPVC window to the front aspect and built in wardrobe.

BEDROOM TWO

9'04" x 7'09" (2.84m x 2.36m)

With a UPVC window to the rear aspect.

BATHROOM/WC

The bathroom has a white suite, comprising of a mains fed over bath shower, pedestal handbasin and WC, there is also a chrome heated towel rail.

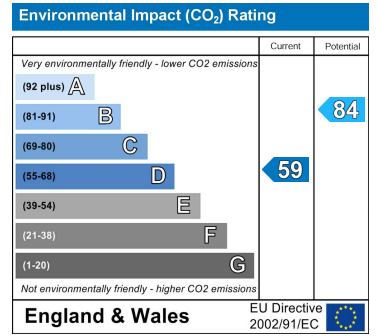
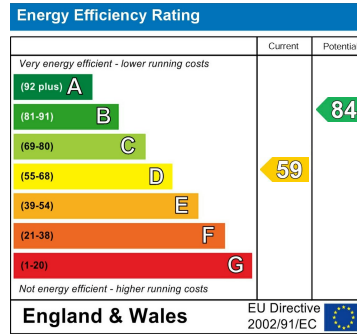
ATTIC

16'10x11'11 (5.13mx3.63m)

Convenient and easy to access storage area. With two velux windows to the rear aspect.

EXTERNALLY

Externally the forecourt is enclosed with a brick built wall and the courtyard to rear is paved with an up and over garage door to the service lane.



YOUR HOME IS AT RISK IF YOU DO NOT KEEP UP REPAYMENTS ON A MORTGAGE OR OTHER LOANS SECURED ON IT.

These particulars do not constitute, nor constitute part of, an offer or contract. An intending purchaser must satisfy himself by inspection or otherwise as to the correctness of each of the statements contained in these particulars. The vendor does not make or give, and neither Ann Cordey, or any other person in their employment has any authority to make or give any representation or warranty whatever in relation to this property. All measurements are approximate.

