



28 Wilsonville Place, Broxburn

Offers Over £370,000



28 Wilsonville Place

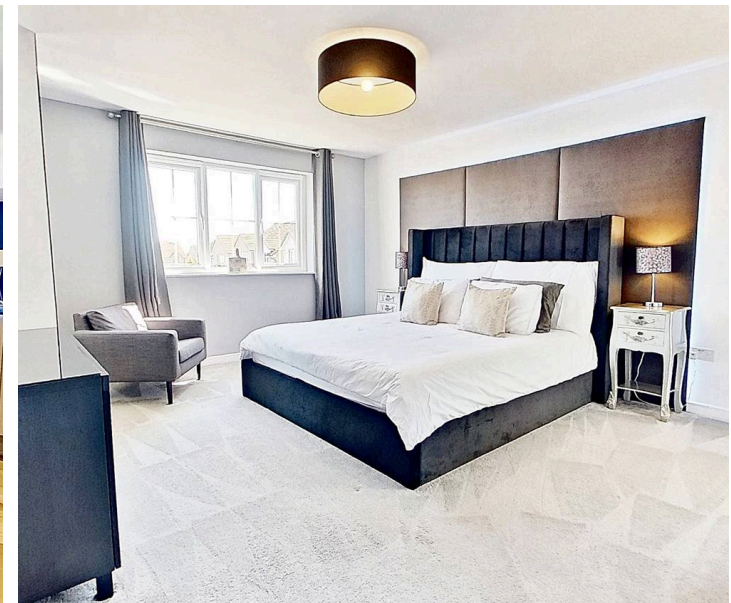
Broxburn

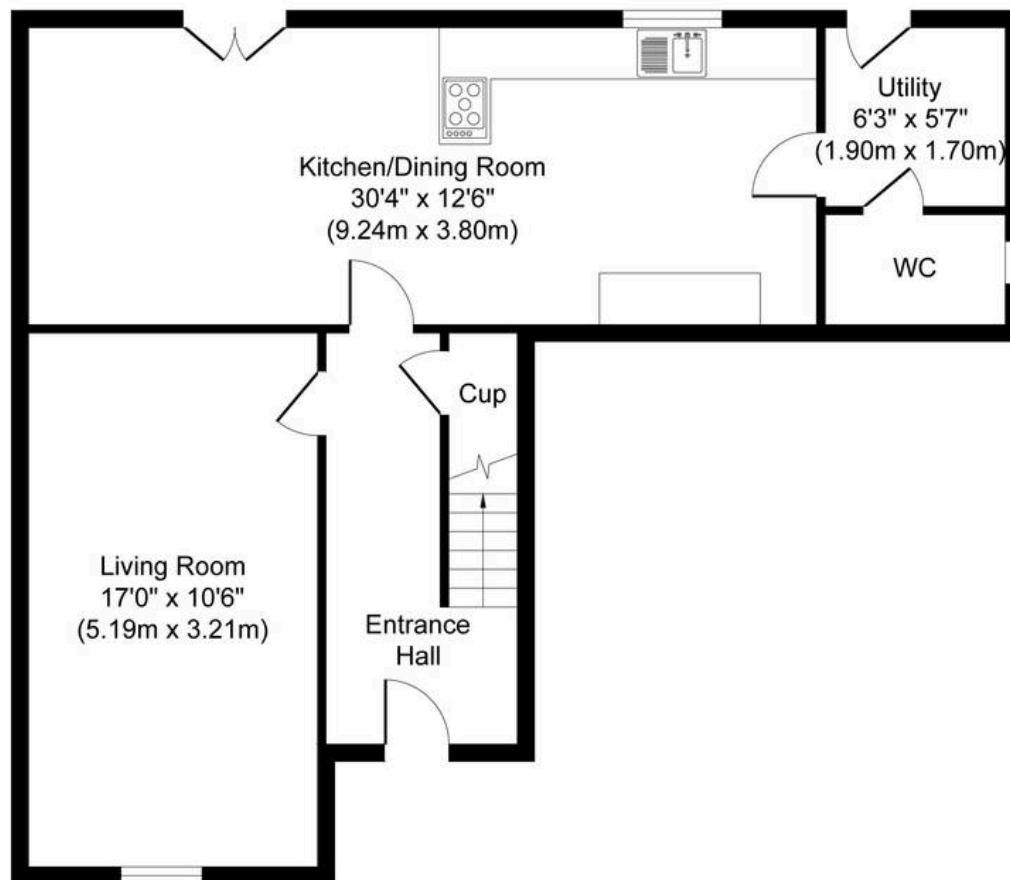
Stunning 4-bed detached house in sought-after location. Modern interior, 2 en-suites, bright lounge, open-plan kitchen, garden studio, double garage, landscaped garden. Luxury living with versatile spaces for relaxation or entertaining.

Council Tax band: F

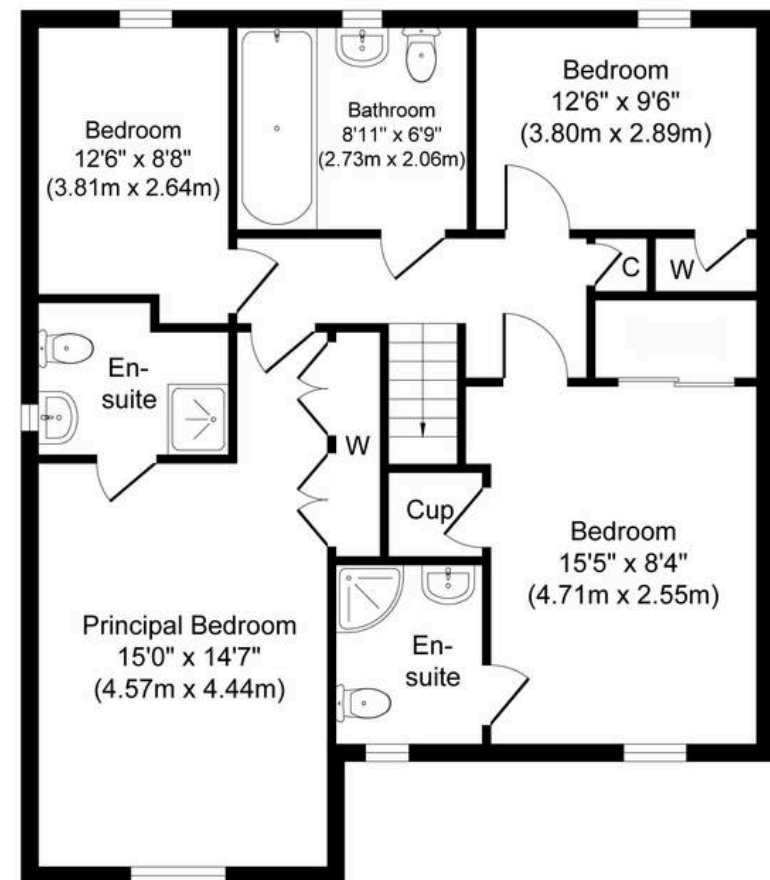
Tenure: Freehold

- Beautifully Finished Four Bed Detached House
- Bright And Spacious Lounge With Feature Wall
- Four Double Bedrooms
- Open Plan Modern Kitchen & Dining Room With Patio Doors Onto Back Garden
- True Move In Condition Throughout
- Family Bathroom Two En-Suites And Downstairs W/C
- Highly Sought After Location
- Utility Room
- Double Garage And Double Monobloc Driveway
- Fully Landscaped West Facing Corner Plot Rear Garden With Garden Studio





Ground Floor
Approximate Floor Area
776 sq. ft
(72.10 sq. m)



First Floor
Approximate Floor Area
792 sq. ft
(73.58 sq. m)

Whilst every attempt has been made to ensure the accuracy of the floor plan contained here, measurements of doors, windows, rooms and any other items are approximate and no responsibility is taken for any error, omission, or mis-statement. The measurements should not be relied upon for valuation, transaction and/or funding purposes. This plan is for illustrative purposes only and should be used as such by any prospective purchaser or tenant.

The services, systems and appliances shown have not been tested and no guarantee as to their operability or efficiency can be given.

Copyright V360 Ltd 2025 | www.houseviz.com



KnightBain Estate Agents

Knightbain, 4 Greendykes Road, Broxburn – EH52 5AG

01506 852000

info@knightbain.co.uk

www.knightbain.co.uk/

