



11 Parkwood Crescent, Broxburn

Offers Over £210,000





# 11 Parkwood Crescent

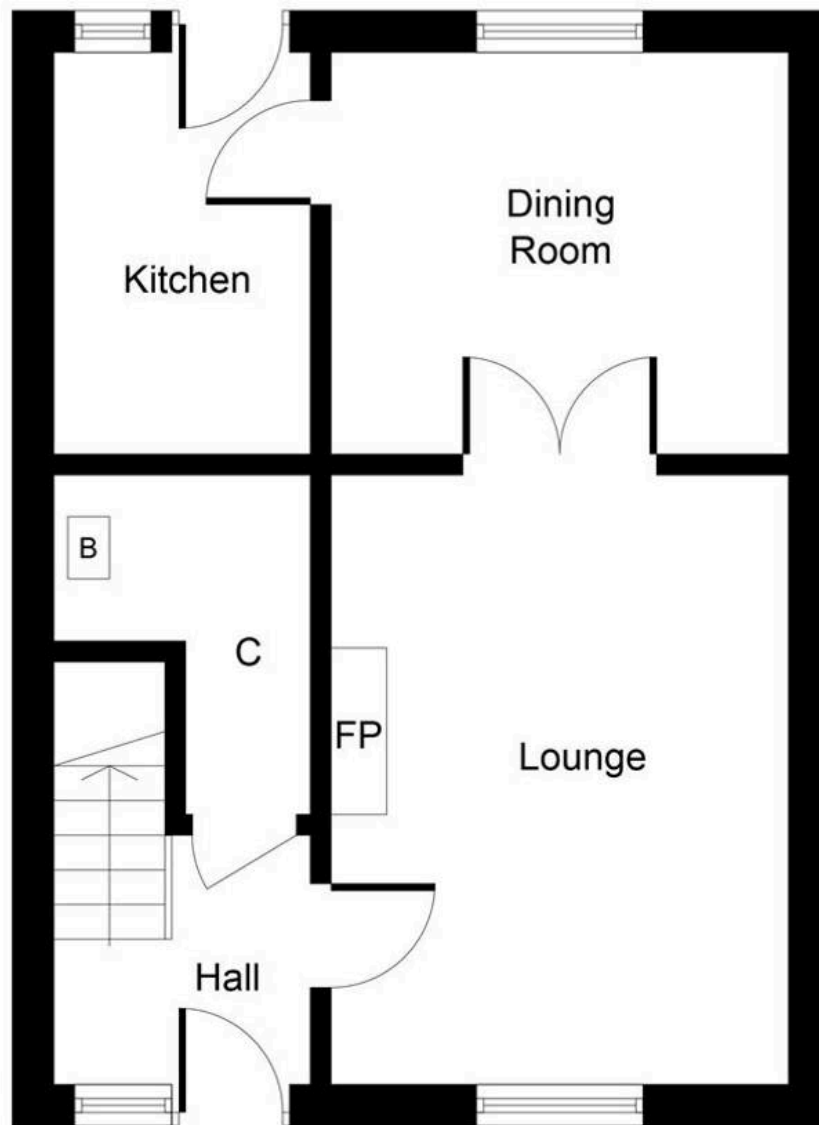
Broxburn

Charming 3-bed semi-detached house in sought-after area. Bright living room, contemporary bathroom, ample storage, peaceful cul-de-sac location, enclosed garden, garage, and parking. Council Tax band: D

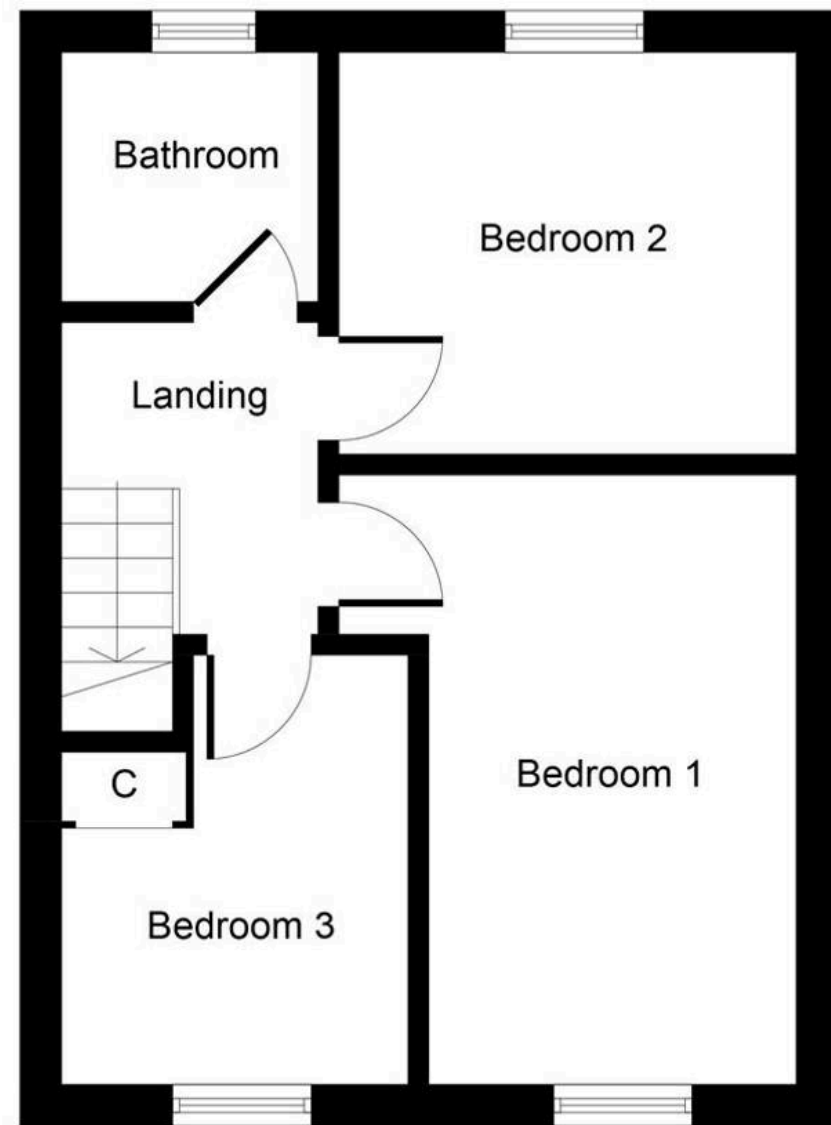
Tenure: Freehold

- Rarely Available Three Bedroom Semi Detached House
- Located Within A Popular Residential Area
- Bright And Spacious Livingroom With Separate Dining Room
- Ideal Family Home In Move In Condition
- Contemporary 3 Piece Bathroom
- Cul-De-Sac Location
- Ample Storage Throughout
- Driveway And Garage
- Close To All Local Amenities And Travel Links
- Fully Enclosed Rear Garden





**Ground Floor**  
**Approximate Floor Area**  
**424 Sq. ft.**  
**(39.4 Sq. m.)**



**First Floor**  
**Approximate Floor Area**  
**421 Sq. ft.**  
**(39.1 Sq. m.)**

Whilst every attempt has been made to ensure the accuracy of the floor plan contained here, measurements of doors, windows, rooms and any other items are approximate and no responsibility is taken for any error, omission, or mis-statement. This plan is for illustrative purposes only and should be used as such by any prospective purchaser or tenant. The services, systems and appliances shown have not been tested and no guarantee as to their operability or efficiency can be given.





## KnightBain Estate Agents

Knightbain, 4 Greendykes Road, Broxburn - EH52 5AG

01506 852000

[info@knightbain.co.uk](mailto:info@knightbain.co.uk)

[www.knightbain.co.uk/](http://www.knightbain.co.uk/)

