



9 Forthview Crescent, Currie

Offers Over £190,000

ESTAS

★★★★★

ESTATE AGENT
AWARDS 2022

BEST AGENCY
NETWORK

The Guild of Property
Professionals

ESTAS

★★★★★

ESTATE AGENT
AWARDS 2021

BEST AGENCY
NETWORK

The Guild of Property
Professionals



9 Forthview Crescent

Currie, Currie

Spacious 2-bed mid-terraced house in a quaint neighbourhood. Spacious lounge/dining area with dual aspect windows providing lovely natural light. Two Double Bedrooms both offering built in storage. Enclosed rear garden. Close to Currie Primary School. Easy commute via road and rail. Council Tax band: TBD

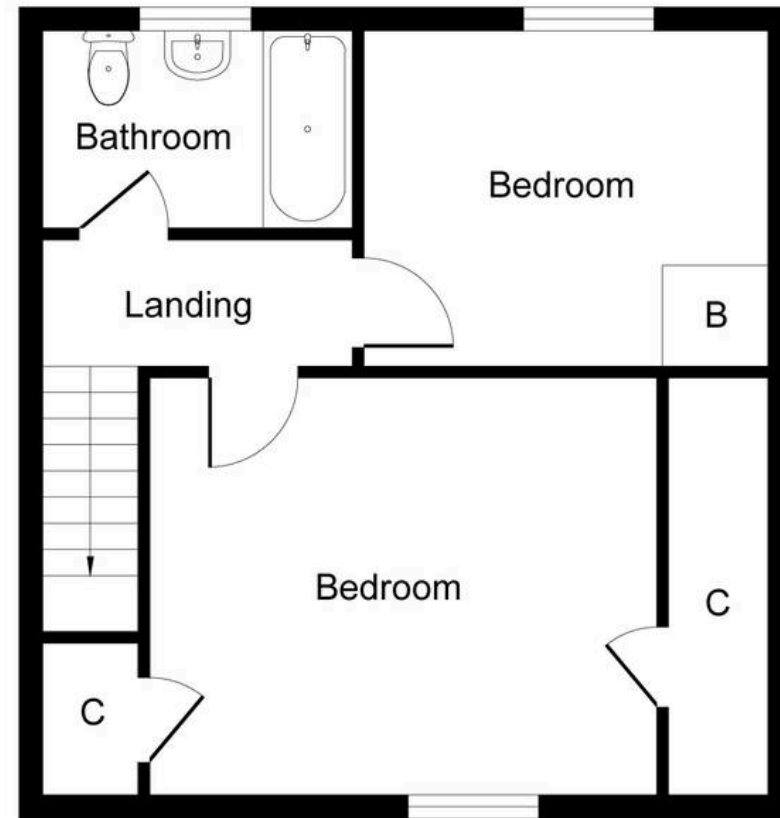
Tenure: Freehold

- Two Double Bedroom Terraced House
- Spacious Lounge/Dining area with dual aspect windows providing bountiful natural light
- Fully enclosed rear garden offering a degree of privacy
- Front garden area also fully enclosed
- Well proportioned accommodation throughout
- Within close proximity to Currie Primary School





Ground Floor
Approximate Floor Area
422 sq. ft
(39.16 sq. m)



First Floor
Approximate Floor Area
422 sq. ft
(39.16 sq. m)

Whilst every attempt has been made to ensure the accuracy of the floor plan contained here, measurements of doors, windows, rooms and any other items are approximate and no responsibility is taken for any error, omission, or mis-statement. The measurements should not be relied upon for valuation, transaction and/or funding purposes. This plan is for illustrative purposes only and should be used as such by any prospective purchaser or tenant.

The services, systems and appliances shown have not been tested and no guarantee as to their operability or efficiency can be given.

Copyright V360 Ltd 2025 | www.houseviz.com



KnightBain Estate Agents

Knightbain, 4 Greendykes Road, Broxburn - EH52 5AG

01506 852000

info@knightbain.co.uk

www.knightbain.co.uk/

