



14/4 Westburn Park, Edinburgh

Offers Over £145,000



14/4 Westburn Park

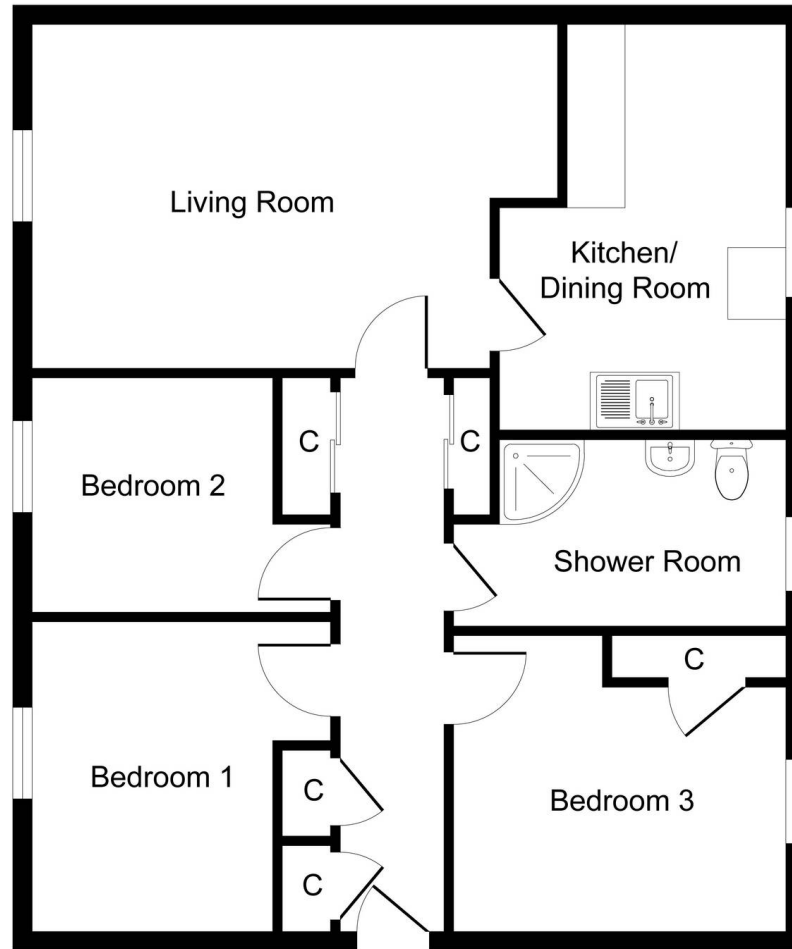
Edinburgh, Edinburgh

Spacious Three Double-bed first-floor flat in sought-after area. Secure entry door system. A well-designed kitchen/dining room, 3 double bedrooms, modern shower room, bright lounge. Communal gardens, unallocated parking bays. Close to amenities & transport links. Ideal city living. Council Tax band: TBD

Tenure: Freehold

- Three Double Bedroom First Floor Flat
- Secure Entry Door System
- Well proportioned Kitchen/Dining Room
- Three piece Shower Room
- Well proportioned Lounge with abundance of natural light
- Double Glazing
- Excellent Transport Links
- Good local amenities
- On-street parking within close proximity





Approximate Floor Area
790 sq. ft
(73.36 sq. m)

Whilst every attempt has been made to ensure the accuracy of the floor plan contained here, measurements of doors, windows, rooms and any other items are approximate and no responsibility is taken for any error, omission, or mis-statement. The measurements should not be relied upon for valuation, transaction and/or funding purposes. This plan is for illustrative purposes only and should be used as such by any prospective purchaser or tenant. The services, systems and appliances shown have not been tested and no guarantee as to their operability or efficiency can be given.
Copyright V360 Ltd 2024 | www.houseviz.com



KnightBain Estate Agents

Knightbain, 4 Greendykes Road, Broxburn - EH52 5AG

01506 852000

info@knightbain.co.uk

www.knightbain.co.uk/

