



15 Hillview Avenue, Broxburn

Offers Over £148,000



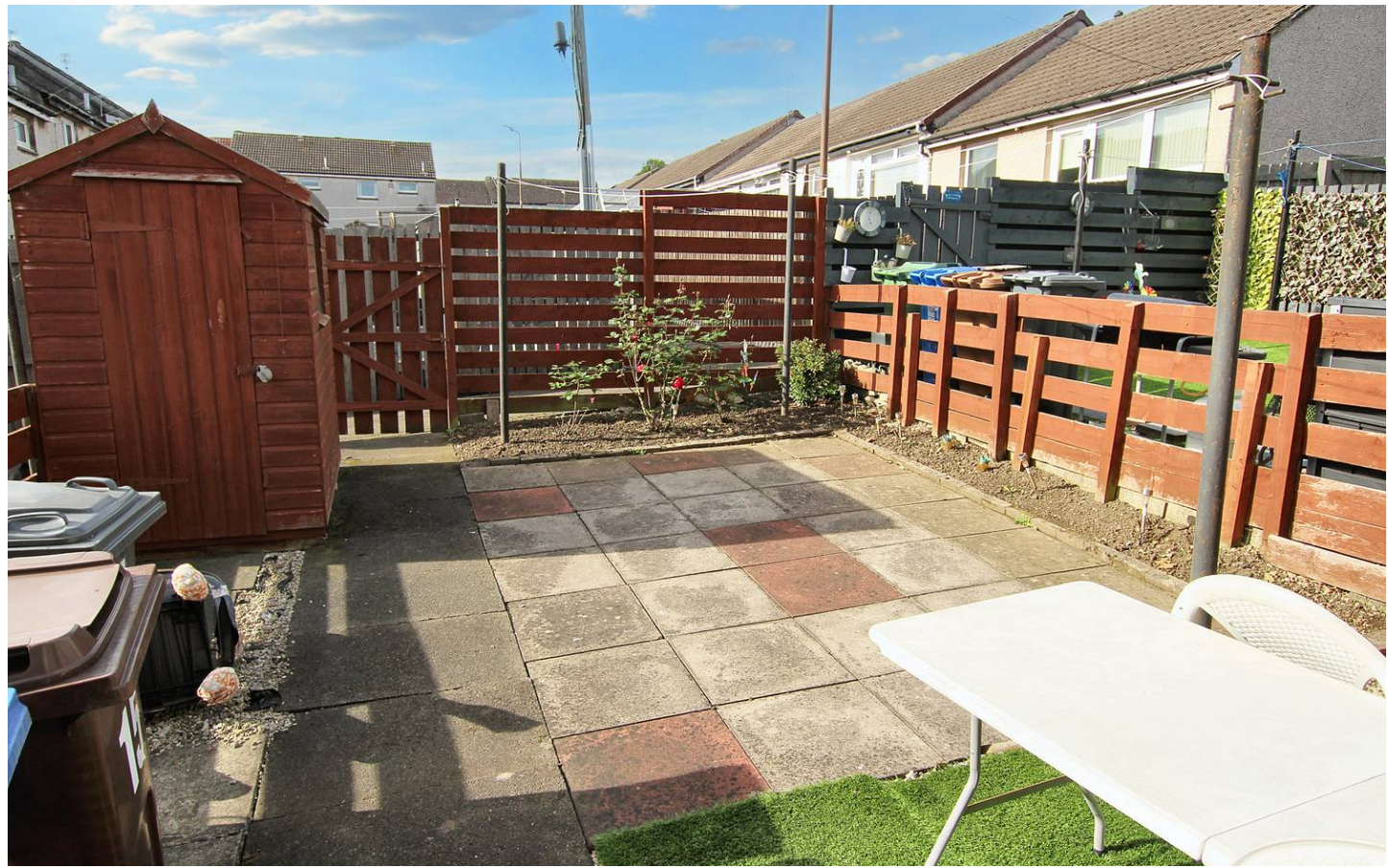
15 Hillview Avenue

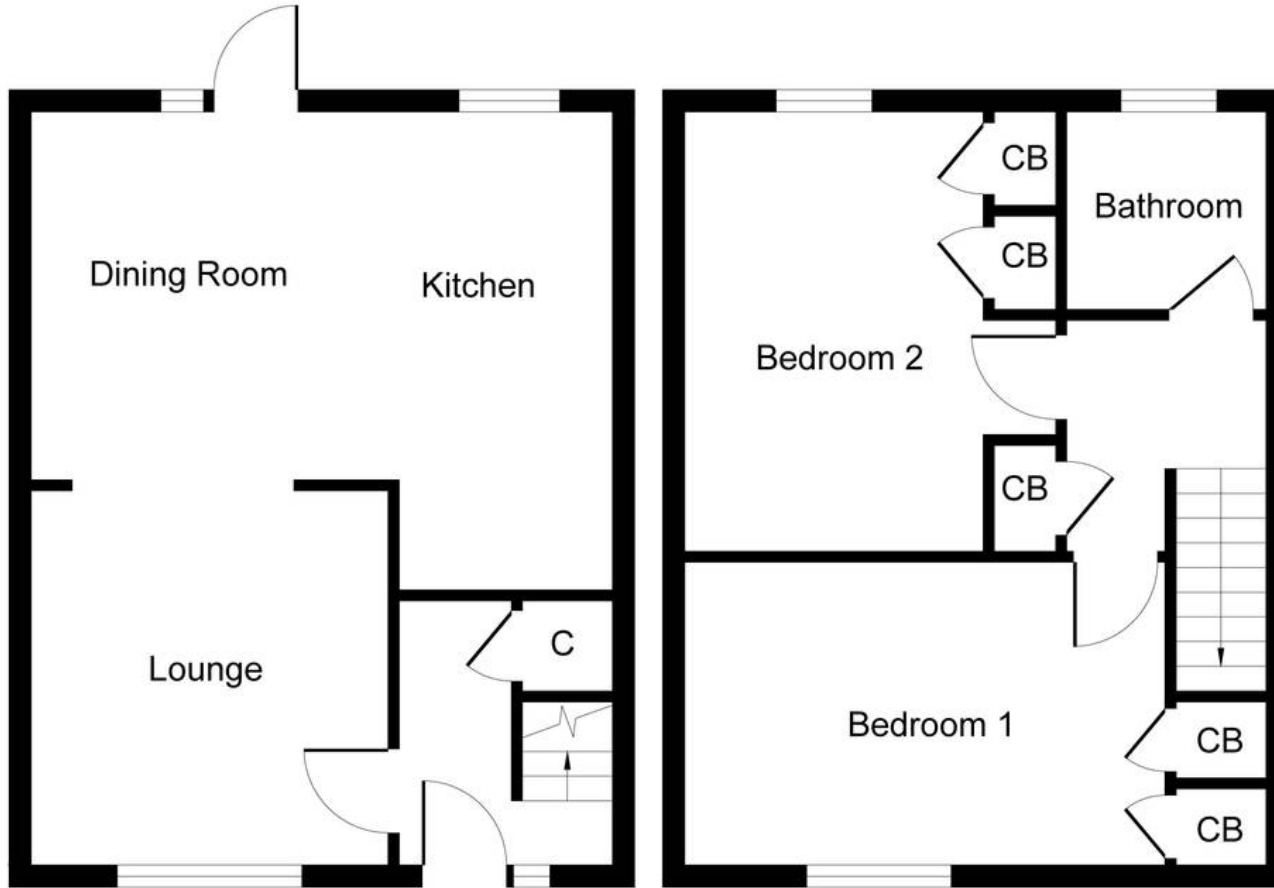
Broxburn, Broxburn

Charming 2-bed mid-terraced house in sought-after location. Generous double bedrooms. Sociable kitchen/diner, family bathroom. Enclosed rear garden with paving and astro-turf, front garden, ample parking. Ideal for comfort and convenience. Council Tax band: TBD

Tenure: Freehold

- Two Double Bedroom Mid-terraced house
- Well proportioned Lounge
- Double Glazing and Gas Central Heating
- Fully enclosed rear garden and open garden ground to front
- Ample parking bays within close proximity to the property
- Located within highly desirable location and within close proximity to local amenities
- Sociable Kitchen/Diner ideal for family gatherings and entertaining
- Family Bathroom

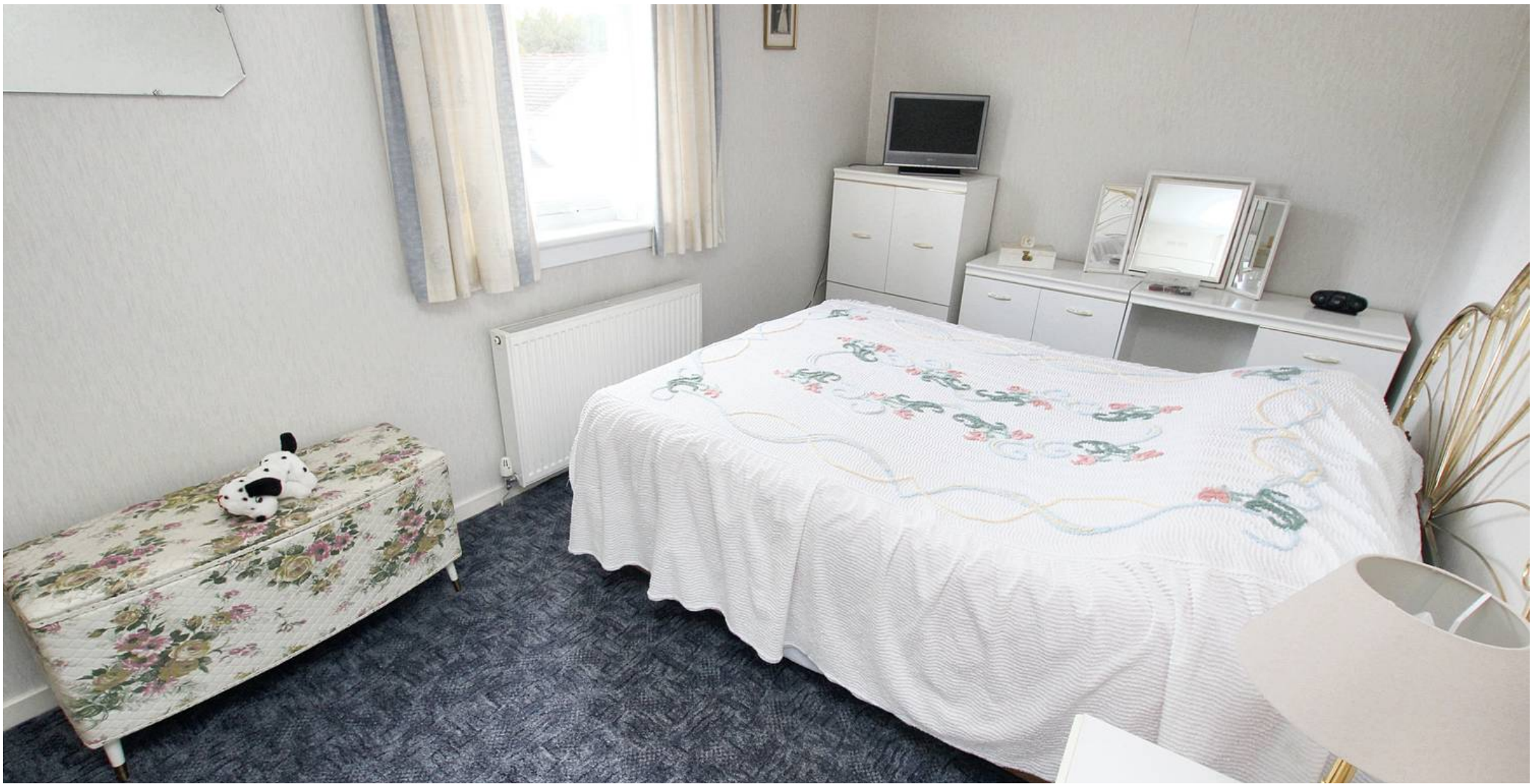




Ground Floor
Approximate Floor Area
374 sq. ft
(34.75 sq. m)

First Floor
Approximate Floor Area
374 sq. ft
(34.75 sq. m)

Whilst every attempt has been made to ensure the accuracy of the floor plan contained here, measurements of doors, windows, rooms and any other items are approximate and no responsibility is taken for any error, omission, or mis-statement. The measurements should not be relied upon for valuation, transaction and/or funding purposes. This plan is for illustrative purposes only and should be used as such by any prospective purchaser or tenant. The services, systems and appliances shown have not been tested and no guarantee as to their operability or efficiency can be given.



KnightBain Estate Agents

Knightbain, 4 Greendykes Road, Broxburn - EH52 5AG

01506 852000

info@knightbain.co.uk

www.knightbain.co.uk/

