



24 Curran Crescent, Broxburn

Offers Over £165,000



24 Curran Crescent

Broxburn

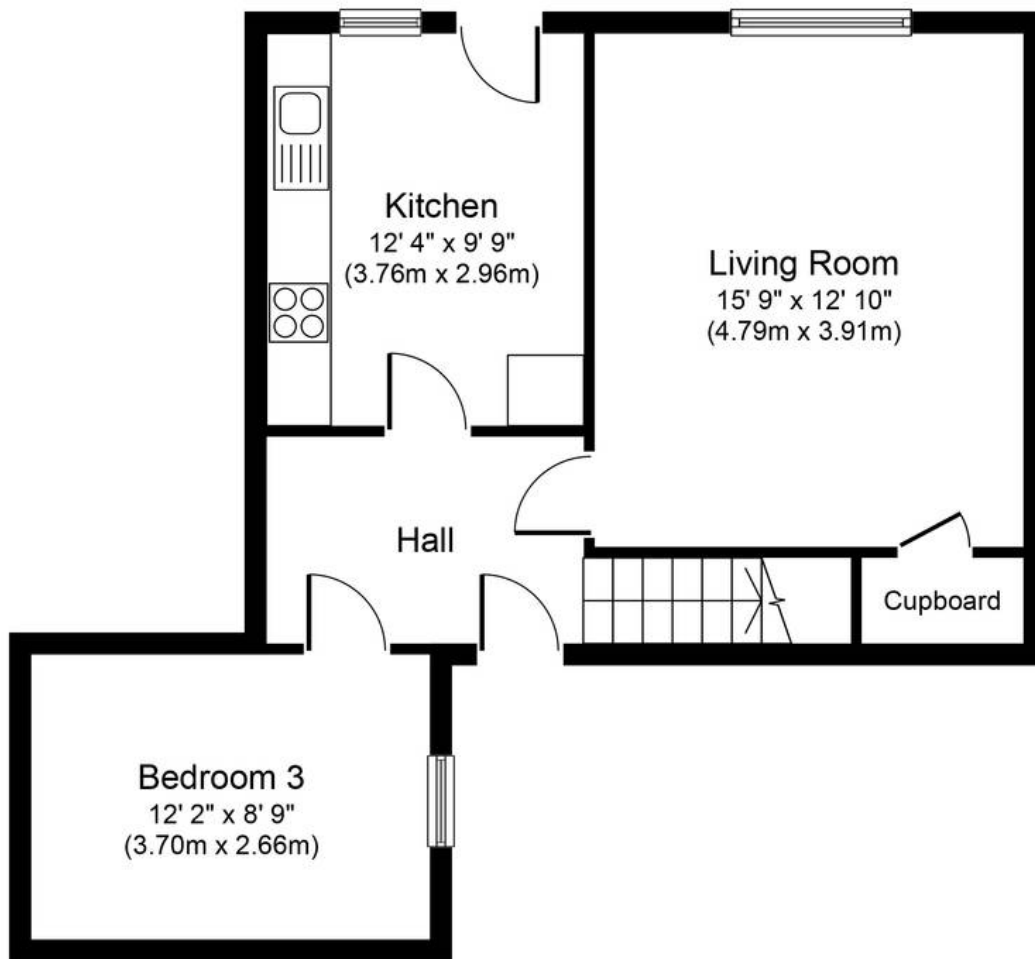
Charming property in sought-after location with 3 double bedrooms, split level layout, ample storage, west-facing garden, and no onward chain. Ideal for families and first time buyers seeking comfort & convenience with excellent commuter links nearby.

Council Tax band: B

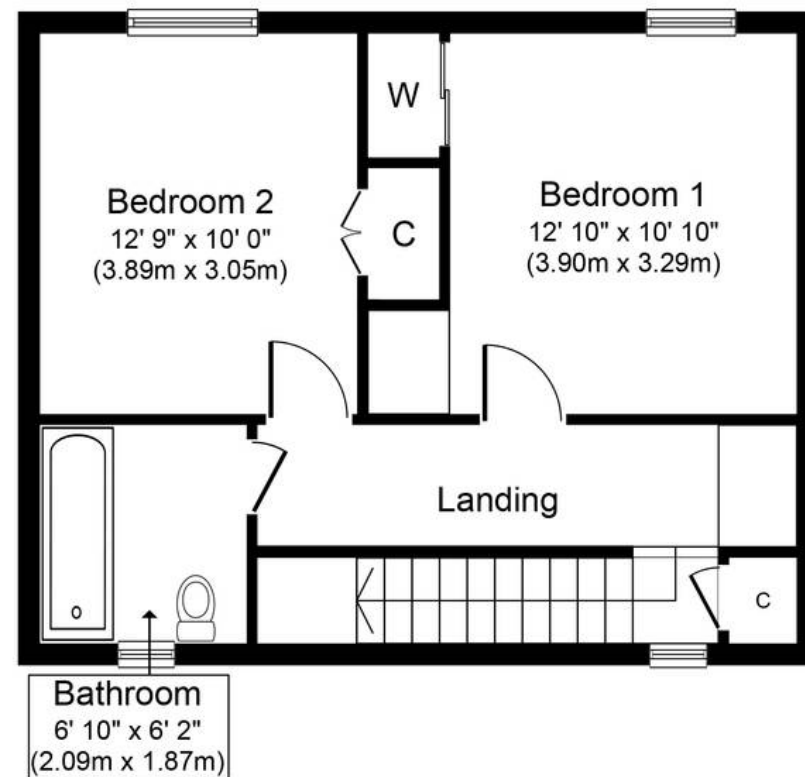
Tenure: Freehold

- Three Double Bedrooms
- No Onward Chain
- Split Level Living
- Ideal For First Time Buyers and Families
- Lots Of Storage Throughout
- Fully Enclosed West Facing Rear Garden
- Quiet Cul-De-Sac
- Highly Sought After Location
- Excellent Commuter Links
- Gas Central Heating





Ground Floor
Approximate Floor Area
541 sq. ft.
(50.2 sq. m.)



First Floor
Approximate Floor Area
433 sq. ft.
(40.2 sq. m.)

Whilst every attempt has been made to ensure the accuracy of the floor plan contained here, measurements of doors, windows, rooms and any other items are approximate and no responsibility is taken for any error, omission, or mis-statement. The measurements should not be relied upon for valuation, transaction and/or funding purposes. This plan is for illustrative purposes only and should be used as such by any prospective purchaser or tenant. The services, systems and appliances shown have not been tested and no guarantee as to their operability or efficiency can be given.



KnightBain Estate Agents

Knightbain, 4 Greendykes Road, Broxburn - EH52 5AG

01506 852000

info@knightbain.co.uk

www.knightbain.co.uk/

