



6 Wilson Terrace, Broxburn

Offers Over £163,000



6 Wilson Terrace

Broxburn

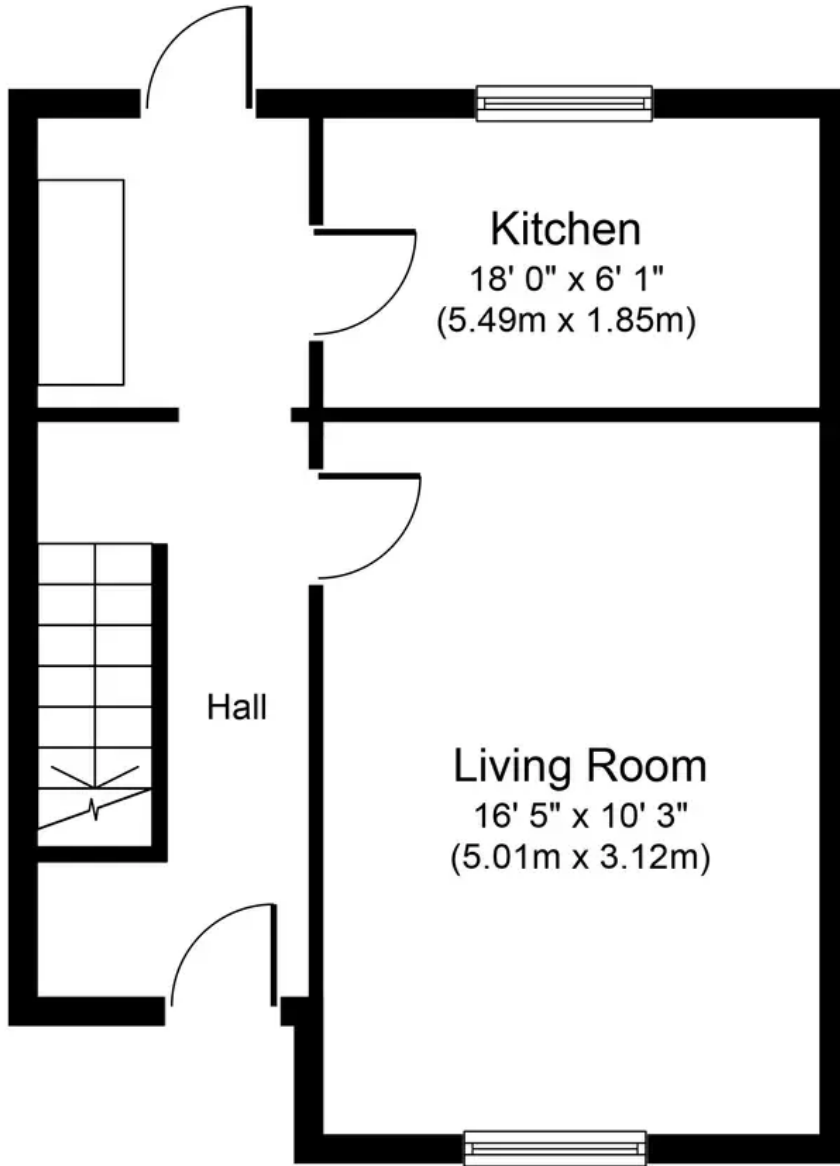
This spacious 2-bed end-terrace house in sought-after location boasts modern kitchen, generous living space, front & rear gardens, and off-street parking. Ideal for families or professionals seeking contemporary living.

Council Tax band: B

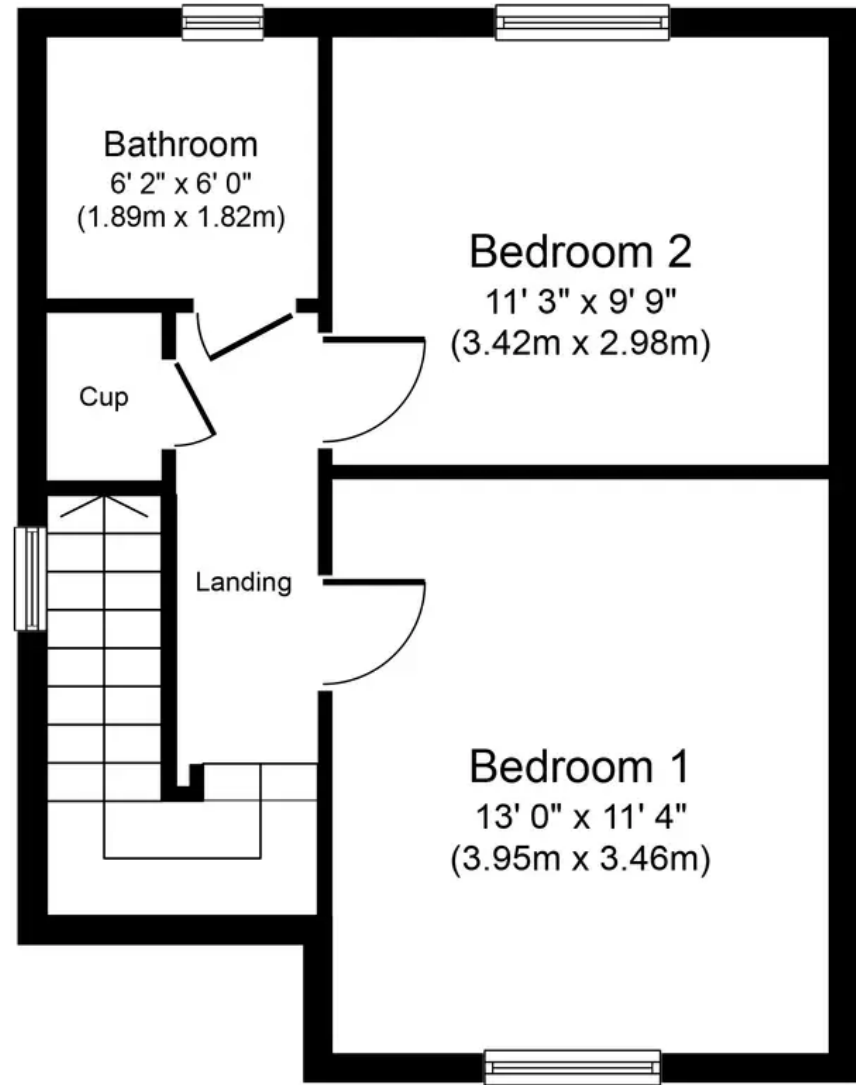
Tenure: Freehold

- End Terrace House
- Two Double Bedrooms
- Modern Kitchen and Utility Room
- Front and Rear Garden
- Mono Block Driveway
- Modern Bathroom
- Ideal Family Home
- Move In Condition
- Close to Local Amenities
- Council Tax Band B





Ground Floor
Approximate Floor Area
395 sq. ft.
(36.7 sq. m.)



First Floor
Approximate Floor Area
395 sq. ft.
(36.7 sq. m.)

Whilst every attempt has been made to ensure the accuracy of the floor plan contained here, measurements of doors, windows, rooms and any other items are approximate and no responsibility is taken for any error, omission, or mis-statement. The measurements should not be relied upon for valuation, transaction and/or funding purposes. This plan is for illustrative purposes only and should be used as such by any prospective purchaser or tenant. The services, systems and appliances shown have not been tested and no guarantee as to their operability or efficiency can be given.



KnightBain Estate Agents

Knightbain, 4 Greendykes Road, Broxburn - EH52 5AG

01506 852000

info@knightbain.co.uk

www.knightbain.co.uk/

