



## 10 Mill House Park, Crieff

Offers Over £115,000





# 10 Mill House Park

Crieff, Crieff

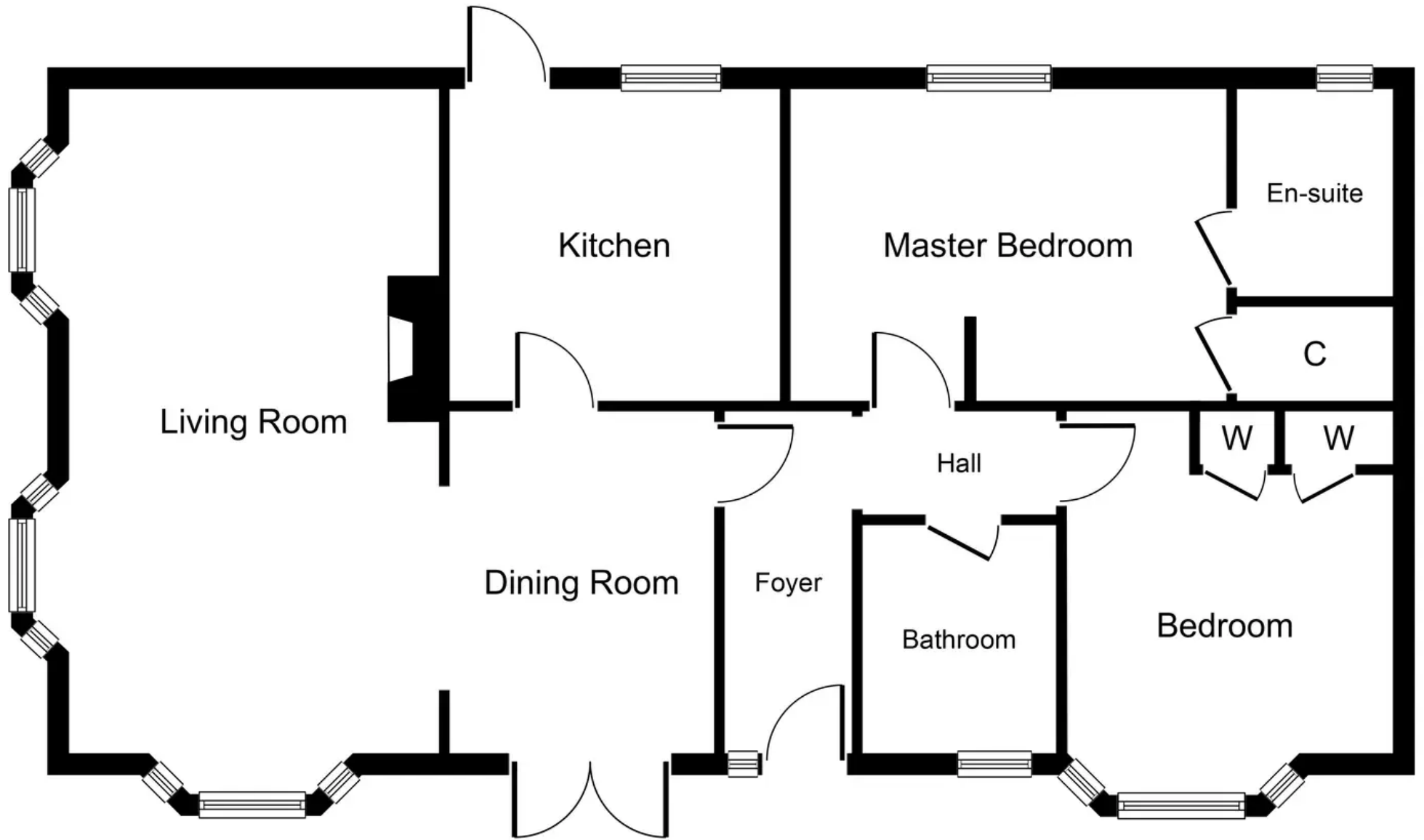
2-bed park home overlooking River Earn with generous living space. Master bedroom with ensuite, dressing room. Dining room, fitted kitchen, gas heating, UPVC windows. Driveway for 2 cars, outdoor oasis. Tranquil living with low site fees and Council Tax Band A.

Council Tax band: A

Tenure: Leasehold

- Spacious Park Home
- Two Double Bedrooms
- Ensuite & Dressing Room
- Separate Dining Room
- Fitted Kitchen with all appliances
- Gas Central Heating
- UPVC Double Glazed Windows and Doors
- Driveway for 2 Cars
- Cash Buyers of over 50 years old
- Ground Rent £226pm, Council Tax Band A





Whilst every attempt has been made to ensure the accuracy of the floor plan contained here, measurements of doors, windows, rooms and any other items are approximate and no responsibility is taken for any error, omission, or mis-statement. The measurements should not be relied upon for valuation, transaction and/or funding purposes. This plan is for illustrative purposes only and should be used as such by any prospective purchaser or tenant. The services, systems and appliances shown have not been tested and no guarantee as to their operability or efficiency can be given.





## **KnightBain Estate Agents**

**Knightbain, 4 Greendykes Road, Broxburn - EH52 5AG**

01506 852000

[info@knightbain.co.uk](mailto:info@knightbain.co.uk)

[www.knightbain.co.uk/](http://www.knightbain.co.uk/)

