



HUNTERS

FOR SALE  
BOOK A VIEWING

16

PLEASE NOTE  
PARKING ONLY  
ON THESE PROPERTIES  
ACCESS REQUIRED

**HUNTERS**<sup>®</sup>  
HERE TO GET *you* THERE

16 Consett Road, Consett, DH8 9QL

# 16 Consett Road, Consett, DH8 9QL

## Reduced To £114,950

Presenting this neutrally decorated terraced house for sale, located in an area rich with public transport links, nearby schools, local amenities, and outdoor activities such as nearby parks, walking routes and cycling routes. This property is a perfect fit for couples.

The house comprises three double bedrooms, a bathroom, a kitchen, a reception room and a separate garage. All bedrooms are well-lit with sunlight, offering a warm and welcoming atmosphere. Bedroom 1 and 2 are spacious, while Bedroom 3 benefits from built-in wardrobes and a balcony. The large bathroom is functional and well-maintained.

The kitchen is bathed in natural light, offering a pleasant space for cooking and dining. The reception room is a fantastic space for entertaining or relaxing, featuring large windows for ample natural light, a cosy fireplace, and a lovely view of the garden.

The property is in a council tax band A and has an EPC rating of D. It's a distinctive terraced property that provides a comfortable and convenient living environment. Its neutral decor allows you the freedom to put your personal stamp on the property, making it feel like home from the moment you move in.

This property is not just a house but a home filled with potential. With its superb location and features, it promises a lifestyle of convenience and comfort. Be sure not to miss out on this fantastic opportunity..

Hunters Consett 15 Victoria Road, Consett, DH8 5BQ | 01207 593838  
consett@hunters.com | www.hunters.com

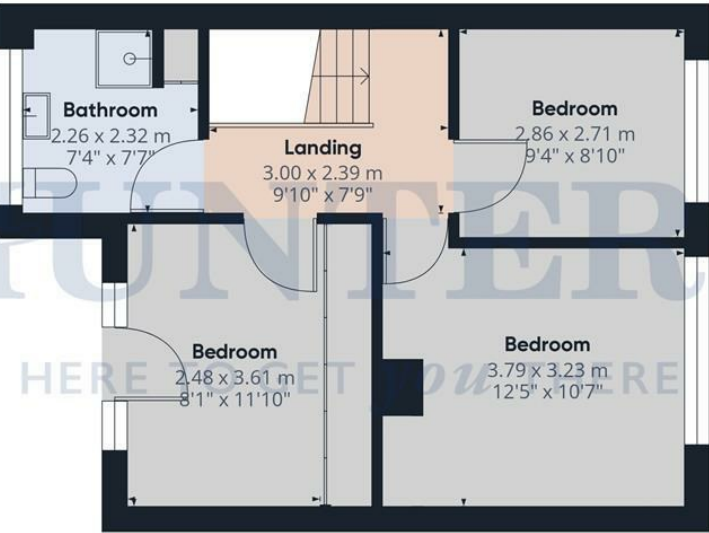
**Porch**  
0.95 x 2.37 m  
3'1" x 7'9"

**Hallway**  
3.48 x 2.11 m  
11'4" x 6'11"

**Lounge**  
3.66 x 6.04 m  
12'0" x 19'9"

**Kitchen**  
3.07 x 3.80 m  
10'0" x 12'5"

Ground Floor



Floor 1



**Approximate total area<sup>(1)</sup>**

84.11 m<sup>2</sup>  
905.35 ft<sup>2</sup>

**Reduced headroom**

1.46 m<sup>2</sup>  
15.72 ft<sup>2</sup>

(1) Excluding balconies and terraces

**Reduced headroom**

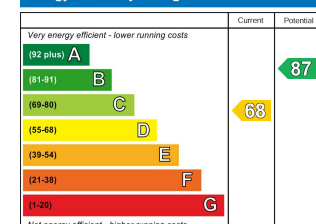
..... Below 1.5 m/5 ft

While every attempt has been made to ensure accuracy, all measurements are approximate, not to scale. This floor plan is for illustrative purposes only.

Calculations are based on RICS IPMS 3C standard.

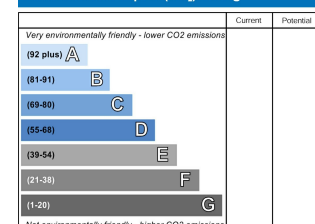
GIRAFFE360

**Energy Efficiency Rating**



Not energy efficient - higher running costs  
EU Directive 2002/91/EC

**Environmental Impact (CO<sub>2</sub>) Rating**




Not environmentally friendly - higher CO<sub>2</sub> emissions  
EU Directive 2002/91/EC

England & Wales

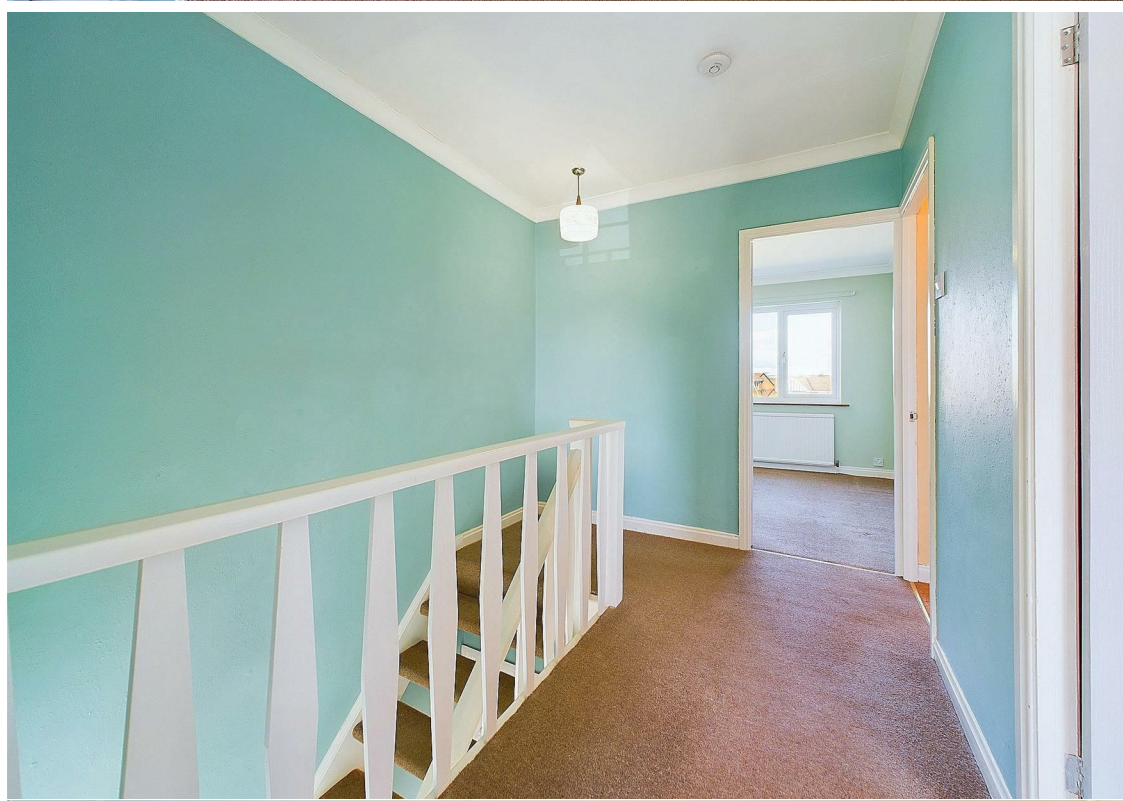
England & Wales

## Energy Efficiency Rating

	Current	Potential
<i>Very energy efficient - lower running costs</i>		
(92 plus) <b>A</b>		
(81-91) <b>B</b>		<b>87</b>
(69-80) <b>C</b>	<b>68</b>	
(55-68) <b>D</b>		
(39-54) <b>E</b>		
(21-38) <b>F</b>		
(1-20) <b>G</b>		
<i>Not energy efficient - higher running costs</i>		
<b>England &amp; Wales</b>	EU Directive 2002/91/EC	

These particulars are intended to give a fair and reliable description of the property but no responsibility for any inaccuracy or error can be accepted and do not constitute an offer or contract. We have not tested any services or appliances (including central heating if fitted) referred to in these particulars and the purchasers are advised to satisfy themselves as to the working order and condition. If a property is unoccupied at any time there may be reconnection charges for any switched off/disconnected or drained services or appliances - All measurements are approximate. If you are thinking of selling your home or just curious to discover the value of your property, Hunters would be pleased to provide free, no obligation sales and marketing advice. Even if your home is outside the area covered by our local offices we can arrange a Market Appraisal through our national network of Hunters estate agents.













**HUNTERS**  
HERE TO GET *you* THERE