



**HUNTERS**<sup>®</sup>  
HERE TO GET *you* THERE

13 Caribees, Consett, DH8 7AY

**HUNTERS**<sup>®</sup>  
HERE TO GET *you* THERE

13 Caribees, Consett, DH8 7AY

£110,000

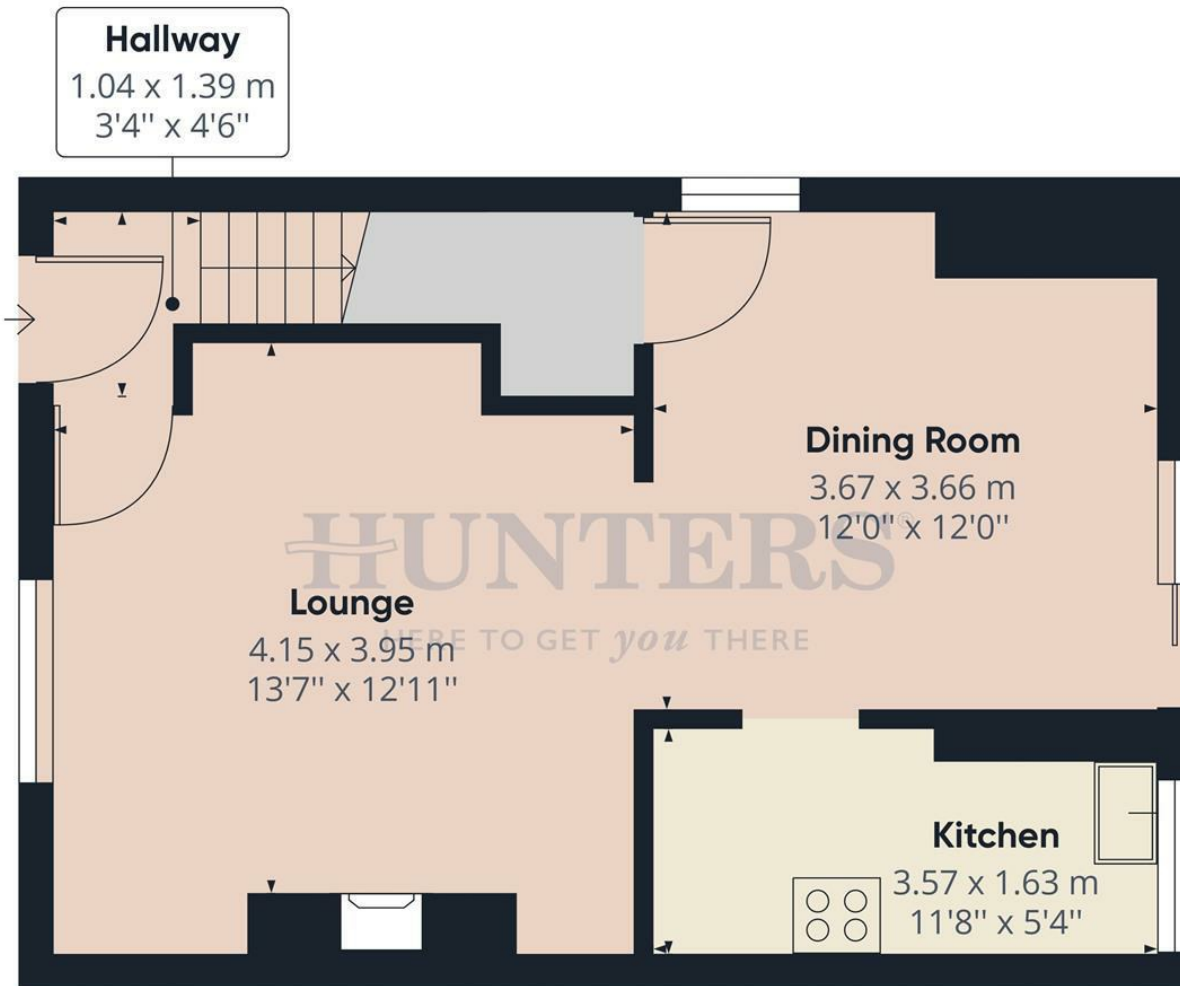
Hunters are delighted to welcome to the market this two bedroom semi detached house, which would make the perfect investment opportunity or first time buyer.

Briefly the property comprises of entrance hallway with stairs leading to the first floor. To the right is the lounge through to the dining room with patio doors to the rear. To the right of the dining room is the kitchen.

To the first floor is two double bedrooms and a family bathroom.

Externally to the front of the property is off road parking for multiple vehicles, detached garage, garden laid to lawn to the front. To the rear is an extensive enclosed garden with part patio area

Hunters Consett 15 Victoria Road, Consett, DH8 5BQ | 01207 593838  
consett@hunters.com | www.hunters.com



Approximate total area<sup>(1)</sup>  
 40.20 m<sup>2</sup>  
 432.71 ft<sup>2</sup>

(1) Excluding balconies and terraces.

While every attempt has been made to ensure accuracy, all measurements are approximate, not to scale. This floor plan is for illustrative purposes only.


GIRAFFE360

Ground Floor

Energy Efficiency Rating		
	Current	Potential
Very energy efficient - lower running costs		
(92 plus) <b>A</b>		
(81-91) <b>B</b>		
(69-80) <b>C</b>		
(55-68) <b>D</b>		
(39-54) <b>E</b>		
(21-38) <b>F</b>		
(1-20) <b>G</b>		
Not energy efficient - higher running costs		
	47	70
EU Directive 2002/91/EC		
England & Wales		

Environmental Impact (CO <sub>2</sub> ) Rating		
	Current	Potential
Very environmentally friendly - lower CO <sub>2</sub> emissions		
(92 plus) <b>A</b>		
(81-91) <b>B</b>		
(69-80) <b>C</b>		
(55-68) <b>D</b>		
(39-54) <b>E</b>		
(21-38) <b>F</b>		
(1-20) <b>G</b>		
Not environmentally friendly - higher CO <sub>2</sub> emissions		
EU Directive 2002/91/EC		
England & Wales		

## Energy Efficiency Rating

	Current	Potential
<i>Very energy efficient - lower running costs</i>		
(92 plus) <b>A</b>		
(81-91) <b>B</b>		
(69-80) <b>C</b>		<b>70</b>
(55-68) <b>D</b>	<b>47</b>	
(39-54) <b>E</b>		
(21-38) <b>F</b>		
(1-20) <b>G</b>		
<i>Not energy efficient - higher running costs</i>		
<b>England &amp; Wales</b>	EU Directive 2002/91/EC	

These particulars are intended to give a fair and reliable description of the property but no responsibility for any inaccuracy or error can be accepted and do not constitute an offer or contract. We have not tested any services or appliances (including central heating if fitted) referred to in these particulars and the purchasers are advised to satisfy themselves as to the working order and condition. If a property is unoccupied at any time there may be reconnection charges for any switched off/disconnected or drained services or appliances - All measurements are approximate. If you are thinking of selling your home or just curious to discover the value of your property, Hunters would be pleased to provide free, no obligation sales and marketing advice. Even if your home is outside the area covered by our local offices we can arrange a Market Appraisal through our national network of Hunters estate agents.



HUNTERS  
HERE TO GET YOU THERE



HUNTERS  
HERE TO GET YOU THERE



HUNTERS  
HERE TO GET YOU THERE



HUNTERS  
HERE TO GET YOU THERE



HUNTERS  
HERE TO GET YOU THERE



HUNTERS  
HERE TO GET YOU THERE



HUNTERS  
HERE TO GET YOU THERE



HUNTERS  
HERE TO GET YOU THERE





HUNTERS  
HERE TO GET YOU THERE



HUNTERS  
HERE TO GET YOU THERE



HUNTERS  
HERE TO GET YOU THERE



HUNTERS  
HERE TO GET YOU THERE





**HUNTERS**<sup>®</sup>

HERE TO GET YOU THERE