



HUNTERS[®]
HERE TO GET *you* THERE

Treetops Rowley, Consett, DH8 9AE

HUNTERS[®]
HERE TO GET *you* THERE

Treetops Rowley, Consett, DH8 9AE

£599,950

Hunters are delighted to welcome this stunning detached bungalow offered to the market with no onward chain. This property is located in Rowley, sitting on one acre of land and boasts spectacular views of the open country side.

As you approach the property you are greeted by a driveway secured by wrought iron gates. There is a sizable lawn to to your left which wraps around three sides of the house. There is a beautiful heart shaped pond which leads up to the garden room/bar, with bi folding doors, fitted benches, a wood burner making this an ideal space for entertaining or relaxing.

As you step into the property you are greeted by a bright and welcoming hallway with sliding mirrored wardrobes, perfect for storing coats.

To your right is four sizable bedrooms. The master bedroom is located to the rear and has an en suite bathroom with walk in shower. The other three bedroom are all fitted with bespoke wardrobes.

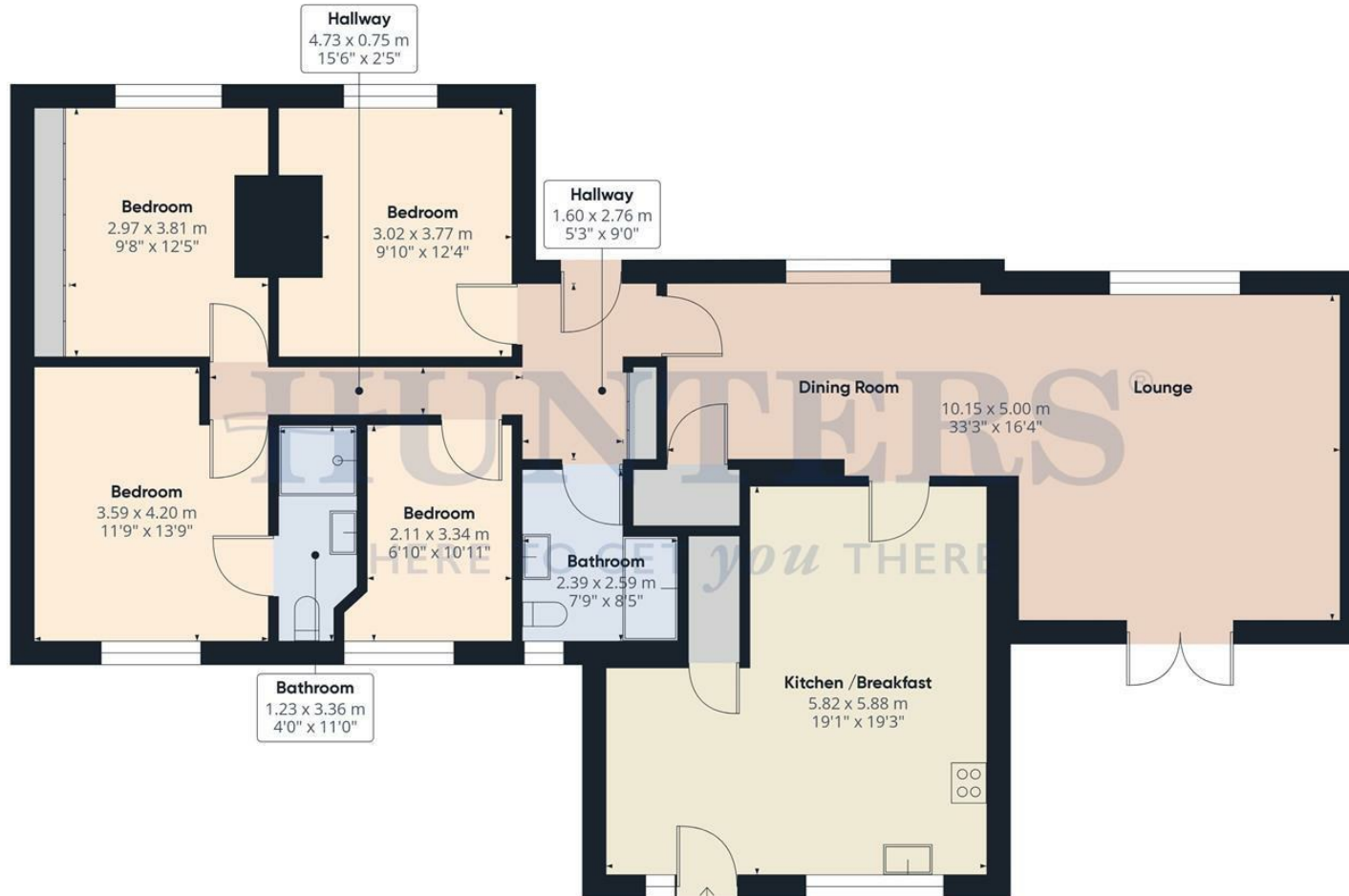
Straight ahead from the hallway is the family bathroom with an impressive vanity unit and shower/bathtub.

Heading to your left is the astonishing open plan living room / diner with a remarkable log burner that offers a warm and cosy atmosphere to this family space.

The kitchen is located to the rear of the property and is the heart of this fabulous home with its ample storage and work space. It features solid surface quartz work tops and kitchen island used as a breakfast bar. This kitchen is fully equipped with integrated Caple appliances such as a dishwasher, microwave, two ovens, warming draw, hob, fridge and freezer.

Externally to the rear the property offers a patio area with porcelain tiles and access to the double garage controlled by an electric roller door. There is also an outhouse/shed that offers more storage and grass laid to lawn.

Hunters Consett 15 Victoria Road, Consett, DH8 5BQ | 01207 593838
consett@hunters.com | www.hunters.com



Approximate total area⁽¹⁾
137.91 m²
1484.47 ft²

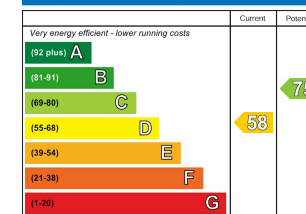
(1) Excluding balconies and terraces

While every attempt has been made to ensure accuracy, all measurements are approximate, not to scale. This floor plan is for illustrative purposes only.

GIRAFFE360

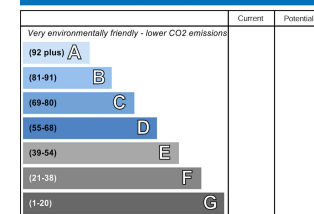
Ground Floor Building 1

Energy Efficiency Rating




England & Wales EU Directive 2002/91/EC

Environmental Impact (CO₂) Rating



England & Wales EU Directive 2002/91/EC

Energy Efficiency Rating

	Current	Potential
<i>Very energy efficient - lower running costs</i>		
(92 plus) A		
(81-91) B		75
(69-80) C		
(55-68) D	58	
(39-54) E		
(21-38) F		
(1-20) G		
<i>Not energy efficient - higher running costs</i>		
England & Wales	EU Directive 2002/91/EC	

These particulars are intended to give a fair and reliable description of the property but no responsibility for any inaccuracy or error can be accepted and do not constitute an offer or contract. We have not tested any services or appliances (including central heating if fitted) referred to in these particulars and the purchasers are advised to satisfy themselves as to the working order and condition. If a property is unoccupied at any time there may be reconnection charges for any switched off/disconnected or drained services or appliances - All measurements are approximate. If you are thinking of selling your home or just curious to discover the value of your property, Hunters would be pleased to provide free, no obligation sales and marketing advice. Even if your home is outside the area covered by our local offices we can arrange a Market Appraisal through our national network of Hunters estate agents.









