

HUNTERS®

HERE TO GET *you* THERE



Knitsley, Consett, DH8 9EL

Offers In The Region Of £3,200,000



WATERMILL PARK COUNTRY HOTEL & FISHING LAKES

Development for sale

3 X Fishing lakes

Fishing Hut with power and lighting

Car park with 16 spaces

Disabled access

Land with potential of glamping

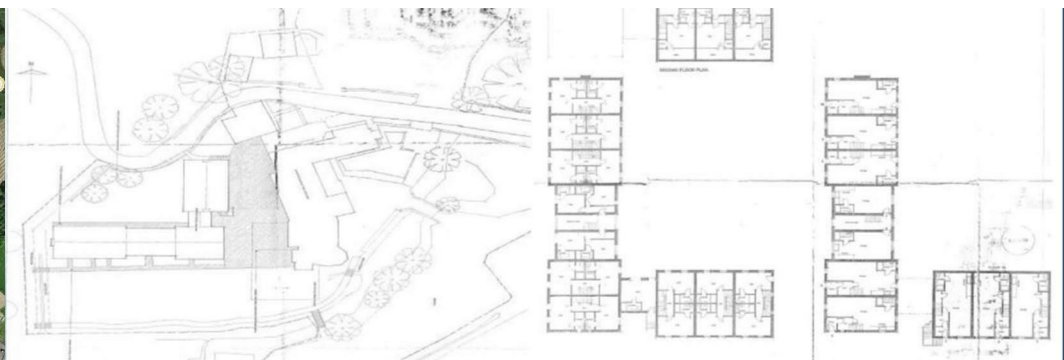
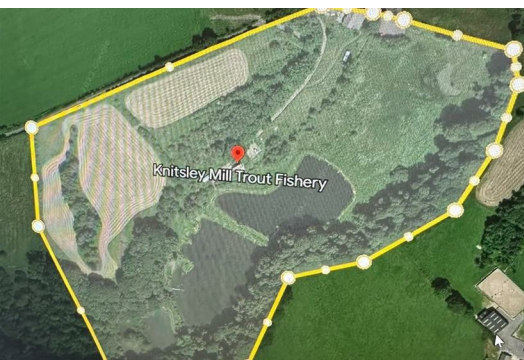
Detailed planning current and commenced for 10 luxury cottages and managers flat designed as hotel block 40 beds all separate access and all en-suite facilities

Stunning setting overlooking water meadow with adjacent country pub and fishing lakes.

Only 2 mile from Consett town centre.

50 weeks occupancy, building regulations done.

FREEHOLD.



Area Map



Floor Plans



Energy Efficiency Graph



These particulars are intended to give a fair and reliable description of the property but no responsibility for any inaccuracy or error can be accepted and do not constitute an offer or contract. We have not tested any services or appliances (including central heating if fitted) referred to in these particulars and the purchasers are advised to satisfy themselves as to the working order and condition. If a property is unoccupied at any time there may be reconnection charges for any switched off/disconnected or drained services or appliances - All measurements are approximate. **THINKING OF SELLING?** If you are thinking of selling your home or just curious to discover the value of your property, Hunters would be pleased to provide free, no obligation sales and marketing advice. Even if your home is outside the area covered by our local offices we can arrange a Market Appraisal through our national network of Hunters estate agents.