

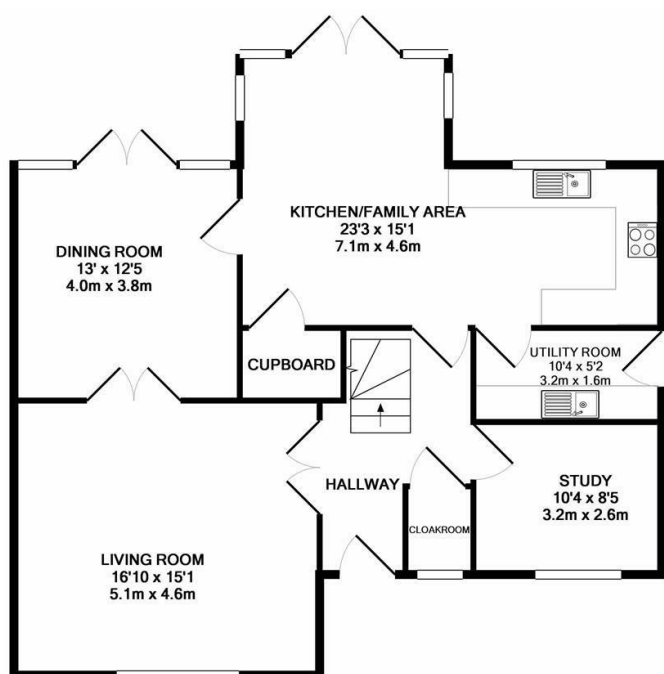


## The Durrington, High Penn Park Calne

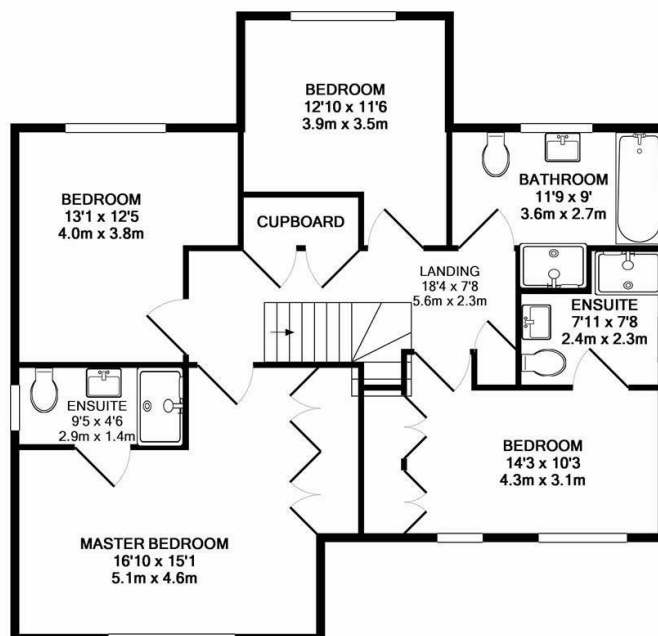
PLOT 154 THE DURRINGTON - A detached family home offering over 2,000 sq ft of flexible and versatile accommodation situated on an attractive development by the

- Detached Family Home offering over 2,000 sq ft of living accommodation.
- Southerly Facing Enclosed Rear Garden
- Bespoke Kitchen with built in Appliances including Microwave and Range Style Cooker.
- Generous Study
- Two En Suites
- Double Garage
- Kitchen/Dining Room with Patio doors leading to Garden
- Family Room with Patio doors leading to Garden
- Four Double Bedrooms
- Family Bathroom with Separate Shower Cubicle

**PLOT 154 THE DURRINGTON** - A detached family home offering over 2,000 sq ft of flexible and versatile accommodation situated on a attractive development by the award winning local developer Hills Homes, located on the outskirts of the Wiltshire market town of Calne. The homes are all being built to Hills exacting standards with traditional methods and are constructed from a mix of brick, stone and render under slate or tiled roofs to reflect the vernacular of Calne.



GROUND FLOOR  
APPROX. FLOOR  
AREA 968 SQ.FT.  
(90.0 SQ.M.)



1ST FLOOR  
APPROX. FLOOR  
AREA 969 SQ.FT.  
(90.0 SQ.M.)

TOTAL APPROX. FLOOR AREA 1938 SQ.FT. (180.0 SQ.M.)

Whilst every attempt has been made to ensure the accuracy of the floor plan contained here, measurements of doors, windows, rooms and any other items are approximate and no responsibility is taken for any error, omission, or mis-statement. This plan is for illustrative purposes only and should be used as such by any prospective purchaser. The services, systems and appliances shown have not been tested and no guarantee as to their operability or efficiency can be given.

Made with Metropix ©2016