

1 Crown Barton | Glastonbury | BA6 9QP

FREEHOLD

£210,000

PROPERTY SUMMARY



A spacious two double bedroom end of terrace house in a central location with allocated parking has come to the market with NO ONWARD CHAIN. The property comprises ; Entrance hall, lounge/diner with doors leading to rear courtyard garden, fitted kitchen, down stairs WC, two double bedrooms and bathroom. An early viewing is highly recommended.



Entrance Hall

Stairs to first floor. Doors leading to kitchen, downstairs WC and lounge/diner.

Lounge/Diner

17'11 x 10'3 (5.46m x 3.12m)

Two radiators. Double glazed French doors leading to patio. Double glazed windows to the side.

Kitchen

9 x 8 (2.74m x 2.44m)

A range of wall, drawer and base units with work surfaces over. Stainless steel sink with drainer and mixer tap over. Tiling to splash prone areas. Integrated electric oven, gas hob and cooker hood over. Room for fridge/freezer. Radiator. Wall mounted boiler. Double glazed window to rear. Door leading to rear patio.

Downstairs WC

Low level WC, wash hand basin.

Stairs To First Floor

Landing

Radiator. Doors leading to bedroom one, two and bathroom. Airing cupboard. Loft access. Double glazed window to front.

Bedroom One

12'5 x 10'4 (3.78m x 3.15m)

Radiator. Double glazed window to side.

End Of Terrace House
Kitchen
Lounge/Diner
Downstairs WC
Two Double Bedrooms
Bathroom
Courtyard Garden
Close To Town Centre
No Onward Chain



**INTERESTED IN THIS
PROPERTY**

Need to sell first?

Please call us on
01458 888 020

to arrange

A FREE

MARKET APPRAISAL

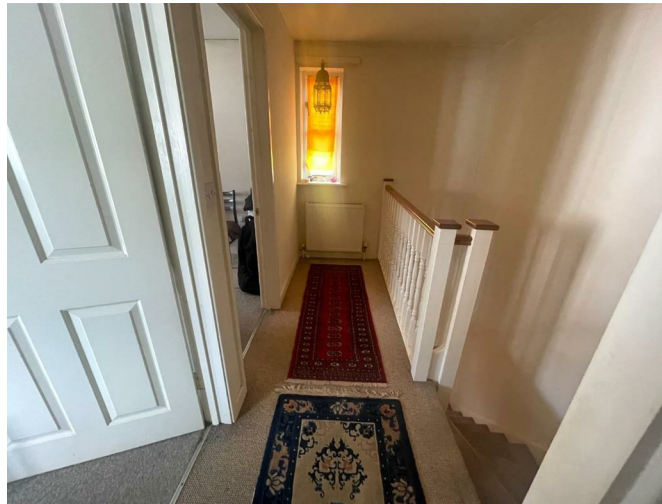
MORTGAGE ADVICE

Would you like to have advice
from a fully qualified Mortgage
Consultant with access to the
mortgage market?

**Tor Finance will assess your
needs and recommend the
most suitable mortgage
product available to you.**

**Please call us on
01458 888 020 ext 3
to arrange
A FREE INITIAL
CONSULTATION**

Your property may be repossessed if
you do not keep up repayments on
your mortgage



Bedroom Two

12'4 x 7'1 (3.76m x 2.16m)

Radiator. Double glazed window to side.

Bathroom

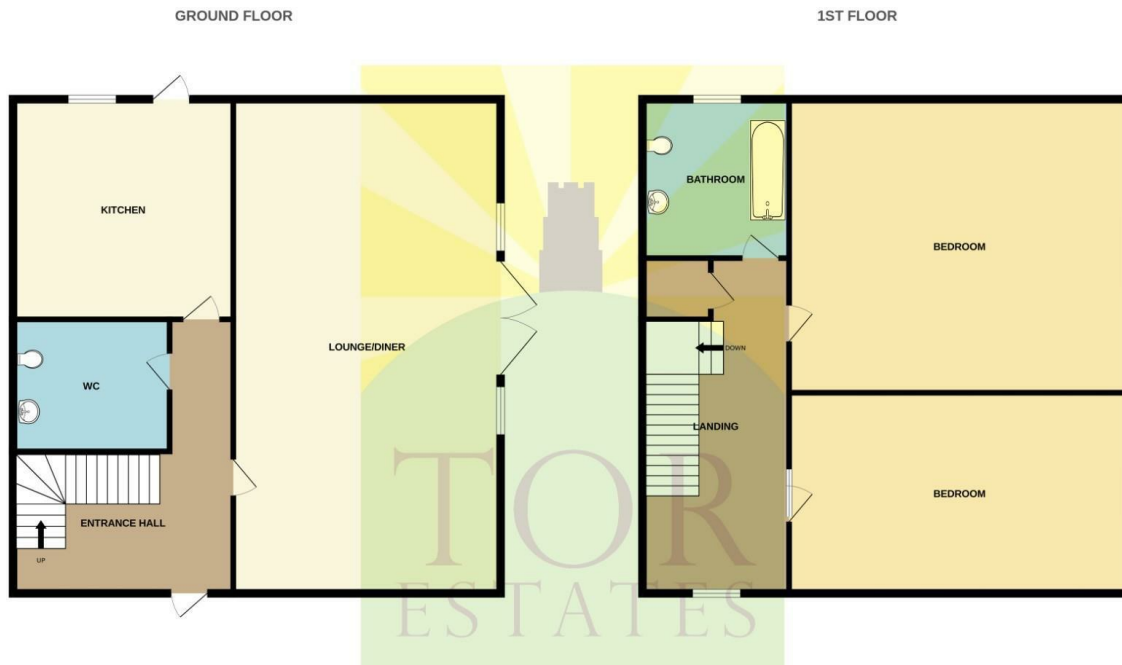
Three piece white suite with low level WC, wash hand basin and panelled bath. Shaving point. Radiator. Double glazed obscure window to side.

Courtyard Garden

Patio to the side and rear of the property, perfect for entertaining. Shed. Wooden gate providing side access.

Disclaimer

Important Notice: Tor Estates, its clients and any joint agents give notice that 1: They are not authorised to make or give any representations or warranties in relation to the property either here or elsewhere, either on their own behalf or on behalf of their client or otherwise. They assume no responsibility for any statement that may be made in these particulars. These particulars do not form part of any offer or contract and must not be relied upon as statements or representations of fact. 2: Any areas, measurements or distances are approximate. The text, photographs and plans are for guidance only and are not necessarily comprehensive. It should not be assumed that the property has all necessary planning, building regulation or other consents and Tor Estates have not tested any services, equipment or facilities. Purchasers must satisfy themselves by inspection or otherwise.



Whilst every attempt has been made to ensure the accuracy of the floorplan contained here, measurements of doors, windows, rooms and any other items are approximate and no responsibility is taken for any error, omission or mis-statement. This plan is for illustrative purposes only and should be used as such by any prospective purchaser. The services, systems and appliances shown have not been tested and no guarantee as to their operability or efficiency can be given.
Made with Metropix ©2024

LETTINGS

Call us today for more information

- Vacant Management
- Tenant Find
- Full Management
- Refurbishment Management
- Block Management
- Commercial Lets

01458 888020

20 High Street
Glastonbury
BA6 9DU

73 High Street
Street
BA16 0EG

www.torestates.co.uk

info@torestates.co.uk
lettings@torestates.co.uk
mortgages@torestates.co.uk

