

1 Edgarley Close | Glastonbury | BA6 9GE

FREEHOLD

£330,000

## PROPERTY SUMMARY



This extremely well presented detached four bedroom house situated on the popular Dunstan Park development, on the outskirts of Glastonbury has come to the market. The property offers a kitchen/diner, living room, downstairs cloakroom, four bedrooms and a family bathroom. Outside, at the rear is an off road parking space and a neatly maintained back garden. An internal viewing is highly recommended.

### ENTRANCE HALL

Door into a double storage cupboard. Radiator. Doors leading to kitchen, lounge/diner and WC. Understairs storage cupboard.

### LOUNGE/DINER

16'5" x 17'11" (5 x 5.46)

Radiator. UPVC double glazed dual aspect window to front. UPVC double glazed windows to rear. UPVC double glazed French doors leading on to rear garden.

### KITCHEN/DINER

11'3" x 11'2" (3.43 x 3.4)

A range of wall, drawer and base units with laminate work surfaces over. Integrated electric oven with gas hob with cooker hood over. Space and plumbing for a washing machine. Space and plumbing for a dishwasher. Stainless steel sink with taps over. Tiling to splash. Breakfast bar. Space for upright fridge/freezer. UPVC double glazed window to rear.

### CLOAKROOM

Low level WC. Pedestal hand basin. Radiator. UPVC obscure window to rear.

### STAIRS TO FIRST FLOOR

### LANDING

Doors leading to bedroom one, two, three, four and family bathroom. Radiator. Door to airing cupboard. Loft access. UPVC double glazed window to front.

### BEDROOM ONE

13'1" x 9'4" (3.99 x 2.84)

Radiator. UPVC double glazed window to rear.



Detached House  
Kitchen/Diner  
Living Room  
Cloakroom  
Four Bedrooms  
Bathroom  
Rear Garden  
Off Road Parking  
Gas Central Heating



**INTERESTED IN THIS  
PROPERTY**

**Need to sell first?**

Please call us on  
**01458 888 020**

to arrange

**A FREE**

**MARKET APPRAISAL**

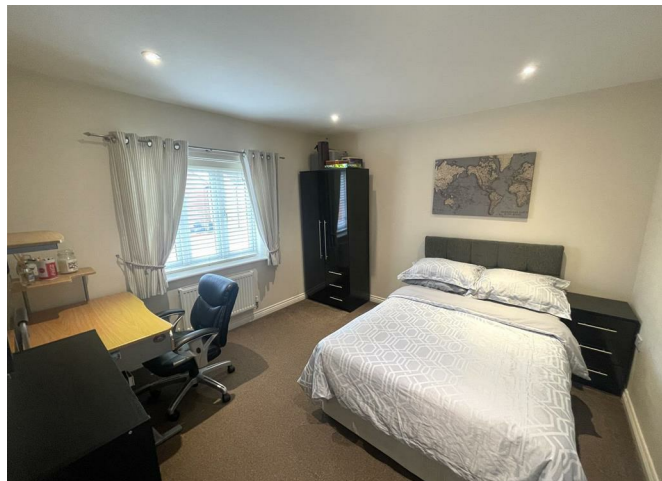
**MORTGAGE ADVICE**

Would you like to have advice  
from a fully qualified Mortgage  
Consultant with access to the  
mortgage market?

**Tor Finance will assess your  
needs and recommend the  
most suitable mortgage  
product available to you.**

**Please call us on  
01458 888 020 ext 3  
to arrange  
A FREE INITIAL  
CONSULTATION**

Your property may be repossessed if  
you do not keep up repayments on  
your mortgage



**BEDROOM TWO**

10'9" x 10'9" (3.28 x 3.28)

Radiator. UPVC double glazed window to rear.

**BEDROOM THREE**

11'9" x 7'0" (3.58 x 2.13)

Radiator. UPVC double glazed window to front.

**BEDROOM FOUR**

9'4" x 8'4" (2.84 x 2.54)

Radiator. UPVC double glazed window to front.

**BATHROOM**

Three piece white suite comprises of low level WC, pedestal wash hand basin and panelled bath with electric shower over. Tiling to splash prone areas. Radiator. Extractor fan. Spotlight's.

**OUTSIDE**

**REAR GARDEN**

Enclosed with a mixture of wooden fencing and brick wall. Laid to lawn with a patio area for entertaining. Shed. Off road parking at the rear side of the property.

**Disclaimer**

Important Notice: Tor Estates, its clients and any joint agents give notice that 1: They are not authorised to make or give any representations or warranties in relation to the property either here or elsewhere, either on their own behalf or on behalf of their client or otherwise. They assume no responsibility for any statement that may be made in these particulars. These particulars do not form part of any offer or contract and must not be relied upon as statements or representations of fact. 2: Any areas, measurements or distances are approximate. The text, photographs and plans are for guidance only and are not necessarily comprehensive. It should not be assumed that the property has all necessary planning, building regulation or other consents and Tor Estates have not tested any services, equipment or facilities. Purchasers must satisfy themselves by inspection or otherwise.



**LETTINGS**

**Call us today for more information**

- Vacant Management
- Tenant Find
- Full Management
- Refurbishment Management
- Block Management
- Commercial Lets

**01458 888020**

20 High Street  
Glastonbury  
BA6 9DU

73 High Street  
Street  
BA16 0EG

[www.torestates.co.uk](http://www.torestates.co.uk)

[info@torestates.co.uk](mailto:info@torestates.co.uk)  
[lettings@torestates.co.uk](mailto:lettings@torestates.co.uk)  
[mortgages@torestates.co.uk](mailto:mortgages@torestates.co.uk)



Whilst every attempt has been made to ensure the accuracy of the floorplan contained here, measurements of doors, windows, rooms and any other items are approximate and no responsibility is taken for any error, omission or mis-statement. This plan is for illustrative purposes only and should be used as such by any prospective purchaser. The services, systems and appliances shown have not been tested and no guarantee as to their operability or efficiency can be given.  
Made with Metropix ©2023

Energy Efficiency Rating		
	Current	Potential
Very energy efficient - lower running costs		
(92 plus) <b>A</b>		
(81-91) <b>B</b>		
(69-80) <b>C</b>		
(55-68) <b>D</b>		
(39-54) <b>E</b>		
(21-38) <b>F</b>		
(1-20) <b>G</b>		
Not energy efficient - higher running costs		
	<b>77</b>	<b>88</b>
<b>England &amp; Wales</b>	EU Directive 2002/91/EC	

