

7 Three Hill View | Glastonbury | BA6 8AU

FREEHOLD

£480,000

PROPERTY SUMMARY



Offering generous well maintained gardens with incredible views across Glastonbury, is this four bedroom detached house. The property comprises an entrance porch, master bedroom with en-suite, three further bedrooms, a kitchen/diner, two family bathrooms and a integral garage. Outside has a driveway offering off road parking for several vehicles. An internal viewing is highly recommended in order to fully appreciate this property.

Entrance Hall

Doors leading to master bedroom, currently used as a second living room, bedroom two and family bathroom. Door leading to garage.

Garage

19'10 x 9'1 (6.05m x 2.77m)
Up and over door. Power and light.

Master Bedroom

16'5 12'7 (5.00m 3.84m)
Currently used as a living room. Underfloor heating. UPVC double glazed window to front. Built in triple wardrobe. Door to en suite.

En Suite

Low level WC. Walk in double shower. Wash hand basin with storage under. Extractor fan. Underfloor heating. UPVC double glazed obscure window to front.

Bedroom Two

11'8 x 12 (3.56m x 3.66m)
Underfloor heating. UPVC double glazed window to side.

Family Bathroom

Three piece suite, low level WC, wash hand basin and panelled bath. Extractor fan. Underfloor heating.

Landing

Opening to kitchen/ diner. Doors leading to lounge, bedrooms three and four and airing cupboard. Door leading to shower room.



Detached House

Kitchen/Diner

Living Room

Two Family Bathrooms

Master Bedroom With En Suite

Three Further Bedrooms

Rear Garden

Fantastic Far Reaching Views

Off Road Parking



**INTERESTED IN THIS
PROPERTY**

Need to sell first?

Please call us on

01458 888 020

to arrange

A FREE

MARKET APPRAISAL

MORTGAGE ADVICE

Would you like to have advice from a fully qualified Mortgage Consultant with access to the mortgage market?

Tor Finance will assess your needs and recommend the most suitable mortgage product available to you.

**Please call us on
01458 888 020 ext 3
to arrange
A FREE INITIAL
CONSULTATION**

Your property may be repossessed if you do not keep up repayments on your mortgage



Kitchen/Diner

19;10 x 12'6 (5.79m;3.05m x 3.81m)

A range of wall, drawer and base units with work surface over. Butler sink with mixer tap over. Tiling to splash. Space and plumbing for washing machine. Space for tumble dryer. Integrated electric oven. Gas hob with cooker hood over. Space for an under counter fridge. Space for a dishwasher. Space for upright fridge/freezer. Radiator. Tiled floor. UPVC double glazed dual aspect windows to side. UPVC double glazed window to rear. UPVC double glazed door leading to rear garden. Door leading to living room.

Living Room

16'5 x 14'8 (5.00m x 4.47m)

Feature fire place. Radiator. Wooden flooring. UPVC double glazed window to front.

Bedroom Three

10'3 x 9'6 (3.12m x 2.90m)

Radiator. Wooden floor. UPVC double glazed window to rear.

Bedroom Four

10'8 x 8'6 (3.25m x 2.59m)

Radiator. Wooden flooring. UPVC double glazed window to front.

Bathroom

Low level WC. Wash handbasin and storage unit. Tiling to splash. Double shower. UPVC double glazed window to front.

Rear Garden

Multi - tiered garden. Patio area perfect for entertaining. Various plants, trees and shrubs. Greenhouse. Far reaching views across Glastonbury and beyond.

Front Of Property

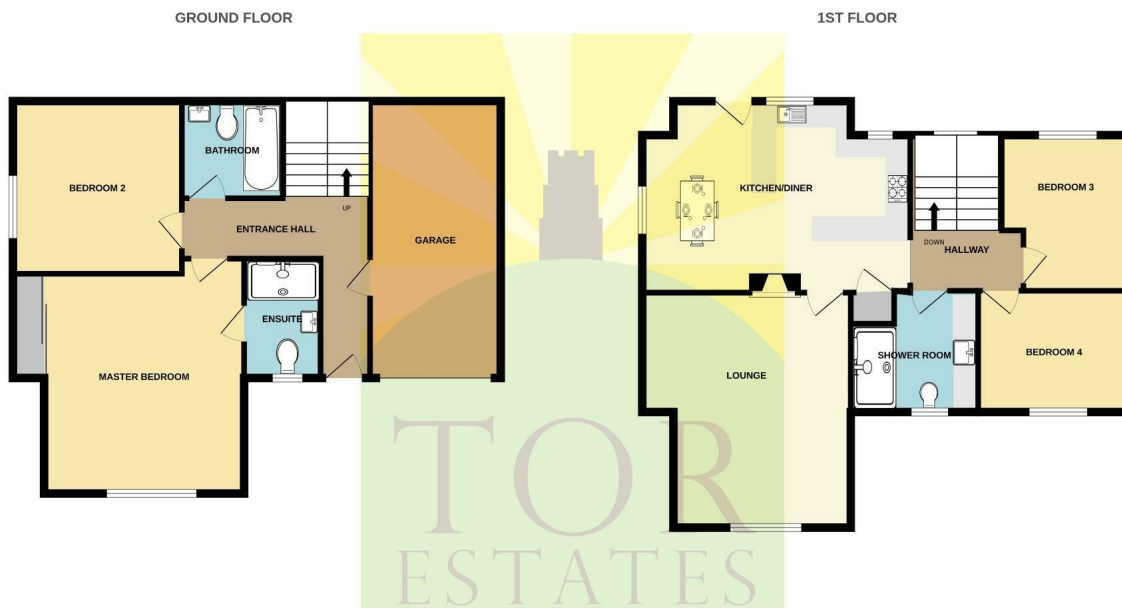
A driveway providing off road parking. Various plants, shrubs and bushes. Steps leading to the rear garden.

Purchasers Note

The property has solar panels that are leased until 2035, benefiting from reduced electric costs. There is a charge of approximately £50.00 per annum for the maintenance of a communal area.

Disclaimer

Important Notice: Tor Estates, its clients and any joint agents give notice that 1: They are not authorised to make or give any representations or warranties in relation to the property either here or elsewhere, either on their own behalf or on behalf of their client or otherwise. They assume no responsibility for any statement that may be made in these particulars. These particulars do not form part of any offer or contract and must not be relied upon as statements or representations of fact. 2: Any areas, measurements or distances are approximate. The text, photographs and plans are for guidance only and are not necessarily comprehensive. It should not be assumed that the property has all necessary planning, building regulation or other consents and Tor Estates have not tested any services, equipment or facilities. Purchasers must satisfy themselves by inspection or otherwise.



Whilst every attempt has been made to ensure the accuracy of the floorplan contained here, measurements of doors, windows, rooms and any other items are approximate and no responsibility is taken for any error, omission or mis-statement. This plan is for illustrative purposes only and should be used as such by any prospective purchaser. The services, systems and appliances shown have not been tested and no guarantee as to their operability or efficiency can be given.
 Made with Metropix ©2024

LETTINGS

Call us today for more information

- Vacant Management
- Tenant Find
- Full Management
- Refurbishment Management
- Block Management
- Commercial Lets

01458 888020

20 High Street
 Glastonbury
 BA6 9DU

73 High Street
 Street
 BA16 0EG

www.torestates.co.uk

info@torestates.co.uk
lettings@torestates.co.uk
mortgages@torestates.co.uk

Energy Efficiency Rating		Current	Potential
Very energy efficient - lower running costs			
(92 plus) A			
(81-91) B			
(69-80) C		77	75
(55-68) D			
(39-54) E			
(21-38) F			
(1-20) G			
Not energy efficient - higher running costs			
England & Wales	EU Directive 2002/91/EC		

