

Gills Hill, Radlett
£925,000 (Leasehold)



Set in a prestigious gated development is this beautiful two-bedroom, two bathroom penthouse apartment.

Spanning nearly 1,400 square feet, this high-quality penthouse apartment features a well-appointed kitchen, a 28-foot dual-aspect living room that opens onto a generous roof terrace, a principal bedroom complete with a contemporary en-suite shower room and a walk-in wardrobe, a second double bedroom equipped with fitted wardrobes, and a spacious family bathroom.

Further benefits with this apartment include; a garage with an electric door, an allocated parking space, air-conditioning, insect nets over all windows & doors, so fresh air can be enjoyed anytime and boarded loft space. There is also ample storage throughout, including a large airing cupboard and two additional storage cupboards, one of which is outside off the roof terrace.

The development is surrounded by beautifully landscaped gardens and benefits from secure electric gates.

01923 852434
www.village-estates.co.uk



Village Estates
70d Watling Street, Radlett
Herts WD7 7NP

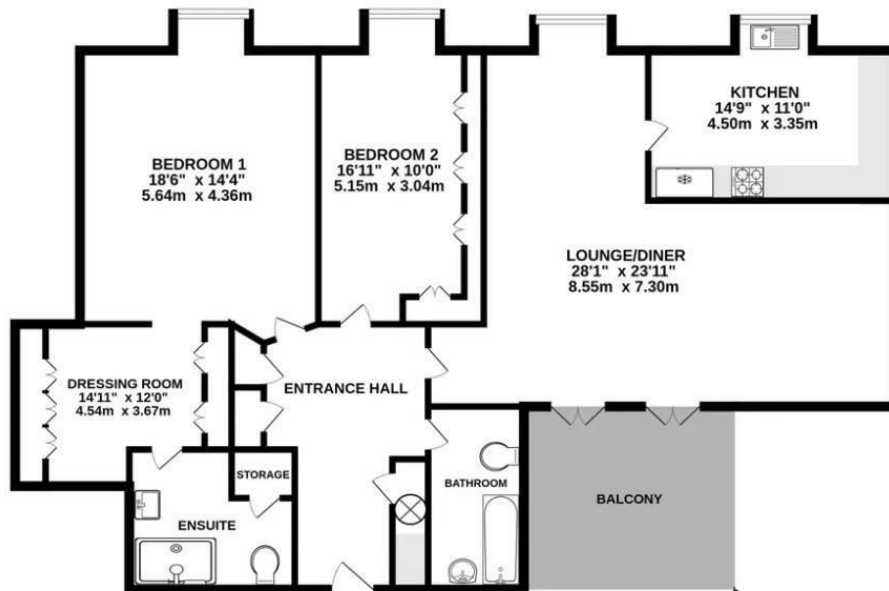
Important Note: These particulars do not form part of any contract. All measurements are approximate and should not be relied upon. All prices quoted are strictly subject to contract.







1399 sq.ft. (130.0 sq.m.) approx.



TOTAL FLOOR AREA : 1399 sq.ft. (130.0 sq.m.) approx.



Available on the
App Store



ANDROID APP ON
Google play

Energy Efficiency Rating		
	Current	Potential
Very energy efficient - lower running costs		
(92 plus) A		
(81-91) B	81	
(69-80) C		
(55-68) D		
(39-54) E		
(21-38) F		
(1-20) G		
Not energy efficient - higher running costs		
England & Wales		EU Directive 2002/91/EC