

Links Drive, Radlett
£895,000 (Freehold)



A 4 bedroom detached chalet bungalow located in this popular private road which is in need of complete modernisation.

The property consists of a large double reception room, a separate kitchen leading onto a stunning south facing garden. There is another front reception room, a study, a shower room, a large storage room and a garage. Further benefits include cavity wall insulation and double glazing throughout.

On the first floor there are four bedrooms, one with a dressing room a separate WC and a storage cupboard.

To the rear is an approx 100' mainly laid to lawn garden with a patio area with stunning trees, side access and bushes that give it a very private feel.

To the fronts is a driveway providing off street parking and access to a single garage.

01923 852434
www.village-estates.co.uk

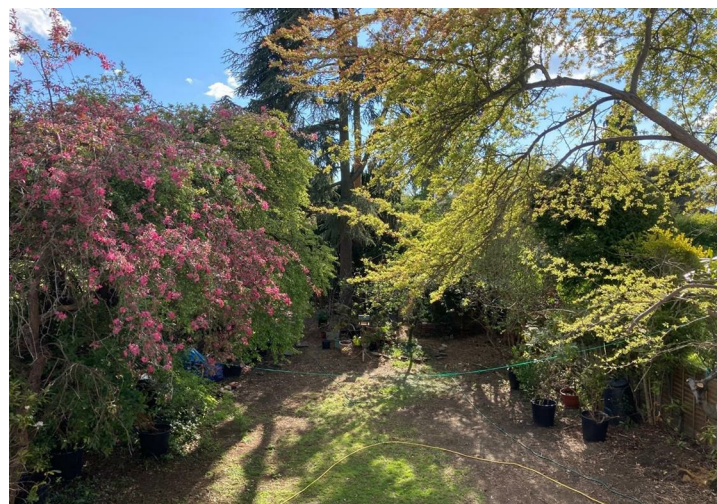


Village Estates
70d Watling Street, Radlett
Herts WD7 7NP

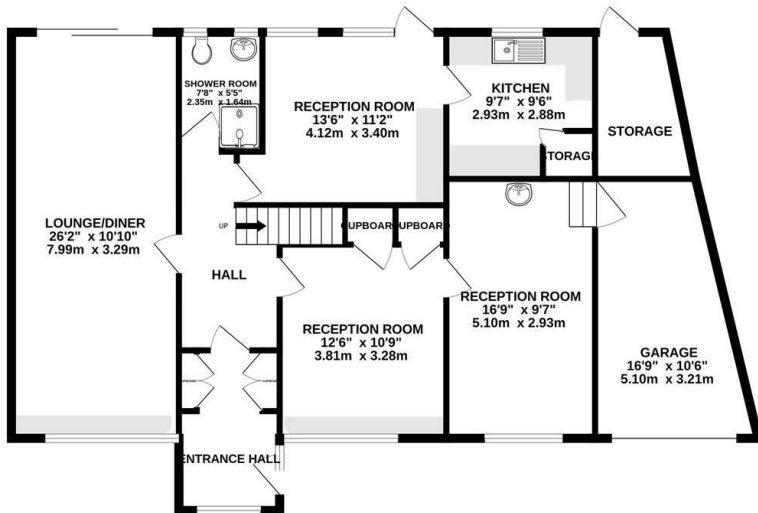
Important Note: These particulars do not form part of any contract. All measurements are approximate and should not be relied upon. All prices quoted are strictly subject to contract.



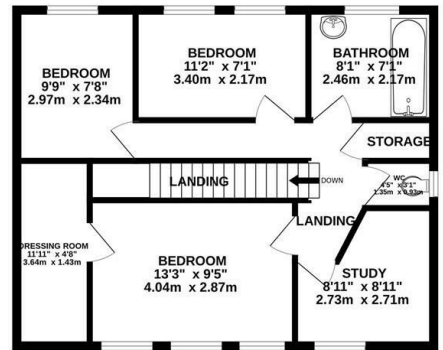




GROUND FLOOR
1211 sq.ft. (112.5 sq.m.) approx.



1ST FLOOR
583 sq.ft. (54.2 sq.m.) approx.



TOTAL FLOOR AREA: 1794 sq.ft. (166.7 sq.m.) approx.

Whilst every attempt has been made to ensure the accuracy of the floorplan contained here, measurements of doors, windows, rooms and any other items are approximate and no responsibility is taken for any error, omission or mis-statement. This plan is for illustrative purposes only and should be used as such by any prospective purchaser. The services, systems and appliances shown have not been tested and no guarantee as to their operability or efficiency can be given.
Made with Metropix ©2024



Energy Efficiency Rating		Current	Potential
Very energy efficient - lower running costs			
(92 plus)	A		
(81-91)	B		85
(69-80)	C		
(55-68)	D	54	
(39-54)	E		
(21-38)	F		
(1-20)	G		
Not energy efficient - higher running costs			
England & Wales		EU Directive 2002/91/EC	