

# The Crescent, Aldenham

£1,125,000 (Freehold)

**VILLAGE**  
E S T A T E S



A unique and charming character 4 bedroom extended semi detached house located in an idyllic setting in the heart of Aldenham village which overlooks the green. The property is light, airy and is offered for sale in excellent order throughout.

To the ground floor is a modern high specification spacious kitchen/diner, lounge, family room, utility room and cloakroom. To the first floor is the master bedroom with en suite shower, 3 further bedrooms and a family bathroom.

The property sits in the middle of the plot which benefits from a triple aspect garden. There is also a driveway which provides off road parking for numerous vehicles.

**01923 852434**  
[www.village-estates.co.uk](http://www.village-estates.co.uk)



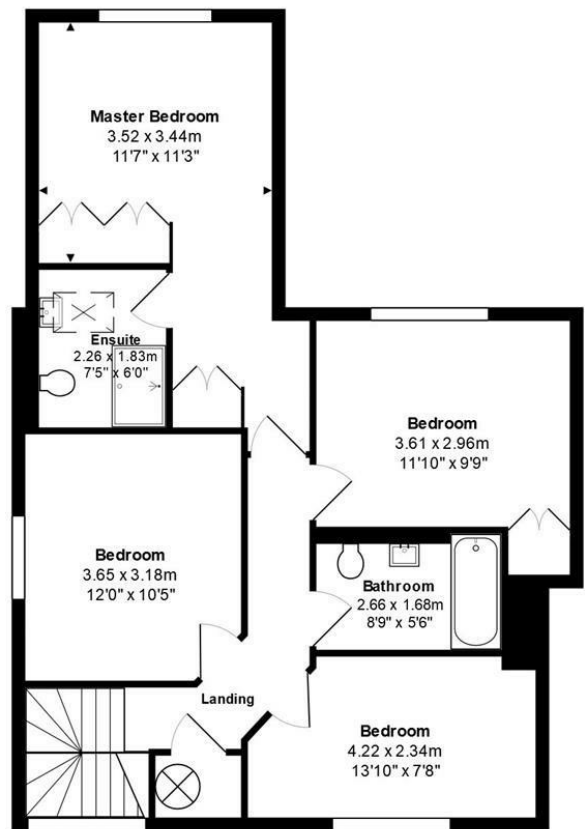
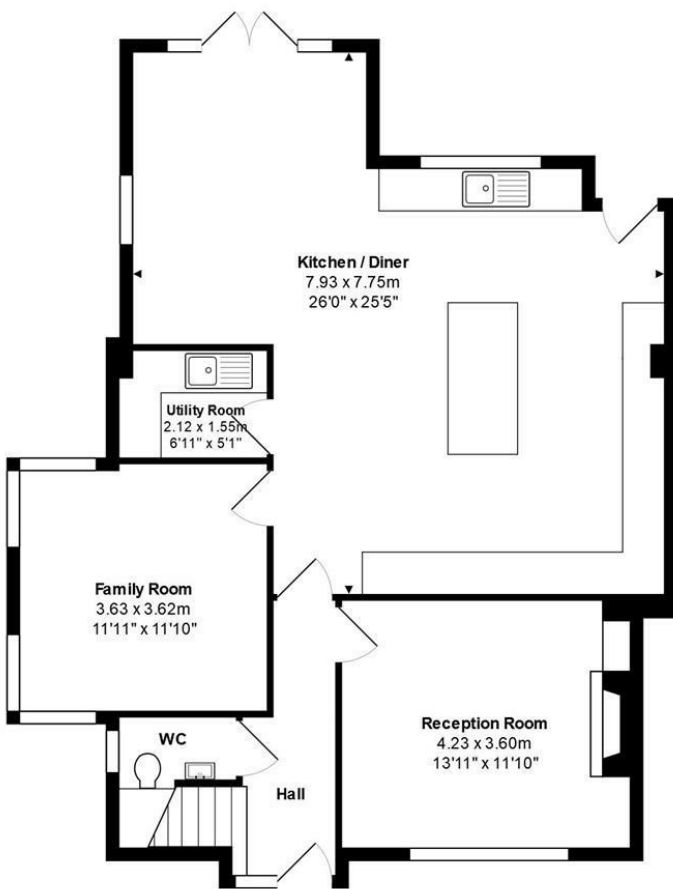
Village Estates  
70d Watling Street, Radlett  
Herts WD7 7NP

Important Note: These particulars do not form part of any contract. All measurements are approximate and should not be relied upon. All prices quoted are strictly subject to contract.









**Garden**  
26.70 x 15.40m  
87'7" x 50'6"

**Ground Floor**

**First Floor**

Total Area: 156.5 m<sup>2</sup> ... 1684 ft<sup>2</sup>

All measurements are approximate and for display purposes only



Available on the  
**App Store**



ANDROID APP ON  
**Google play**

Energy Efficiency Rating		Current	Potential
Very energy efficient - lower running costs			
(92 plus)	A		
(81-91)	B		81
(69-80)	C		
(55-68)	D		
(39-54)	E	39	
(21-38)	F		
(1-20)	G		
Not energy efficient - higher running costs			
<b>England &amp; Wales</b>		EU Directive 2002/91/EC	