



Gilda Crescent, Polegate, East Sussex **Guide £170,000**







Gilda Crescent, Polegate,
East Sussex

Guide £170,000

Property Description

A neatly presented purpose built first floor flat which also has the benefit of a private area of garden to the rear and allocated parking to the front. These popular style of flats are perfect for investment to let or equally as a first or retirement home as it is so close to the High Street and main line station. This one is available immediately and with no onward chain and internal viewing is highly recommended. EPC Rating - awaited

Our View

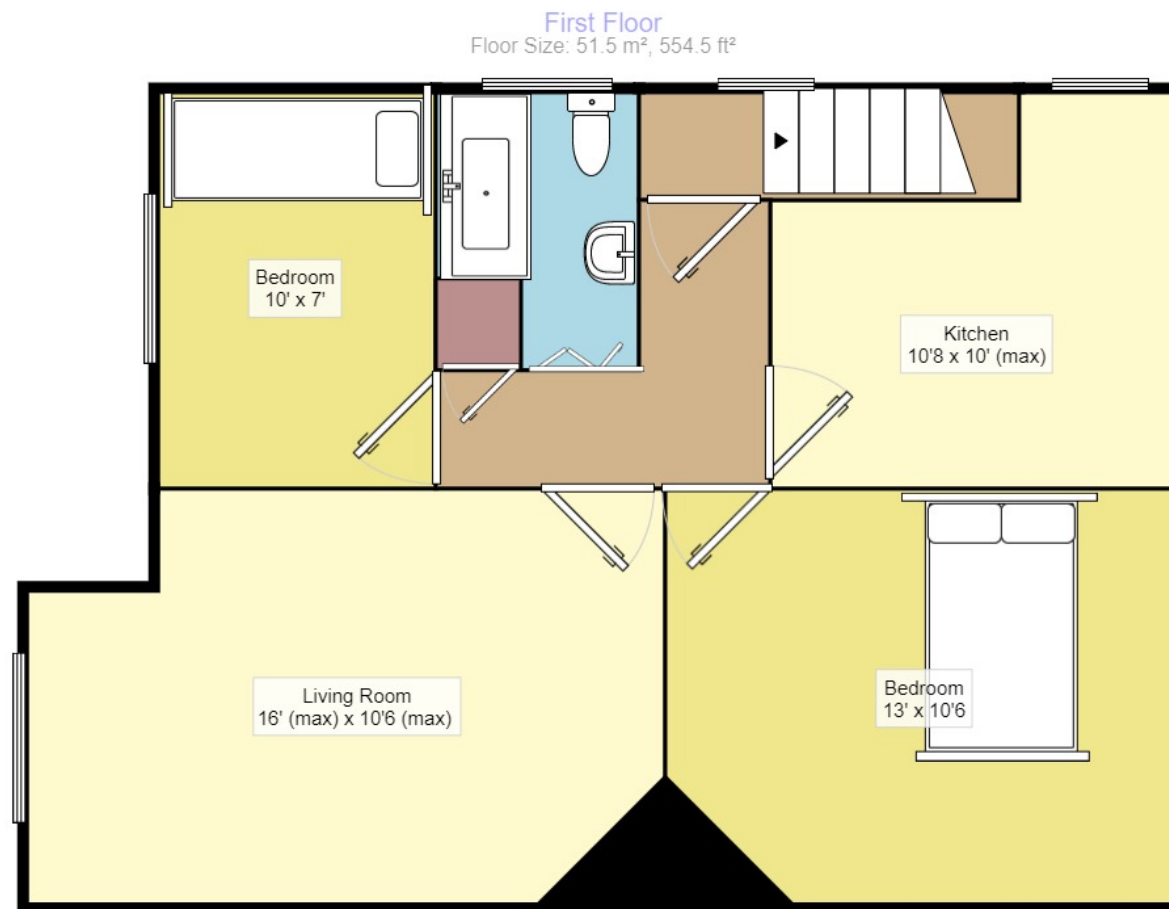
A lovely flat in a great location with added benefit of a private garden. This one is available with NO CHAIN.

Location

Located literally just off the High Street in Polegate within a couple of minutes walk of the local shops and services which include doctors and dentist surgeries as well as the main line rail station with regular services to both the coast at Eastbourne as well as to London (Victoria).



Spacious First Floor Flat
For full EPC please contact the branch



Measurements are approximate. Not to scale. For illustrative purposes only.

IMPORTANT NOTE TO PURCHASERS: We endeavour to make our sales particulars accurate and reliable, however, they do not constitute or form part of an offer or any contract and none is to be relied upon as statements of representation or fact. The services, systems and appliances listed in this specification have not been tested by us and no guarantee as to their operating ability or efficiency is given. All measurements have been taken as guide to prospective buyers only, and are not precise. Floor plans where included are not to scale and accuracy is not guaranteed. If you require clarification or further information on any points, please contact us, especially if you are travelling some distance to view. Fixtures and fittings other than those mentioned are to be agreed with the seller.

The Your Move branch is operated by National Home Move Limited which is independently owned and operated under a licence from your-move.co.uk Limited. National Home Move Limited is registered in England and Wales with company number 11805074, registered office: 5 Brooklands Place, Brookland Road, Sale, United Kingdom, M33 3SD. VAT Reg No: 315255523.

91 High Street, Polegate, East Sussex, BN26 6AE
01323 482321 * Polegate@your-move.co.uk

*Calls may be recorded and/or monitored for training and/or security purposes.

