

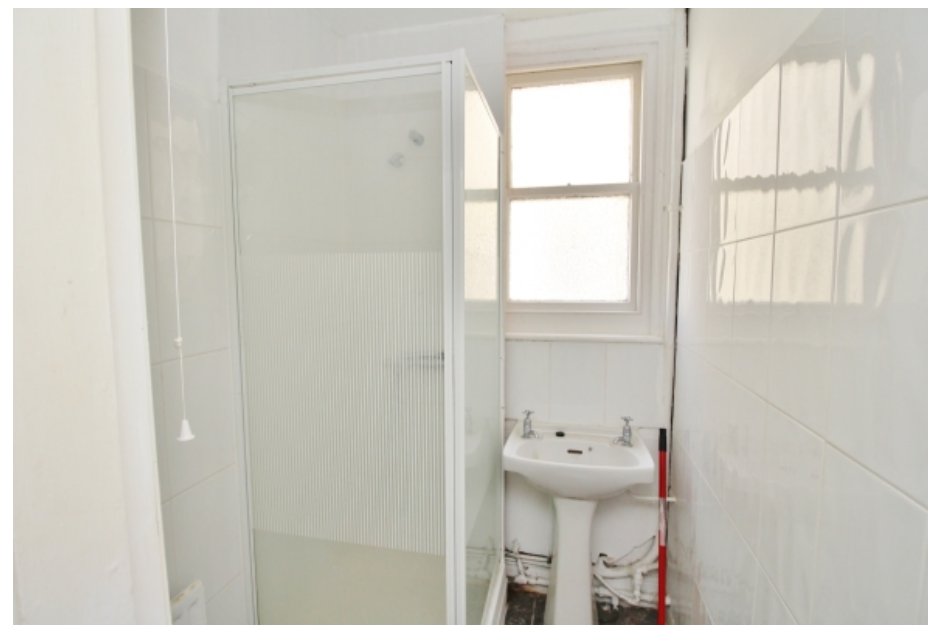


Ceylon Place, Eastbourne, East Sussex    **£400,000**









## Ceylon Place, Eastbourne, East Sussex

**£400,000**

### Property Description

SALE AGREED ---- BUY AN INCOME! Looking for the best investment in town? Check out this 9 Bedroom HMO generating a rental income of over £45,000. Situated in Eastbourne's town centre perfect place for working single people as well as students looking for rental accommodation. Non-Domestic EPC Grade D

### Our View

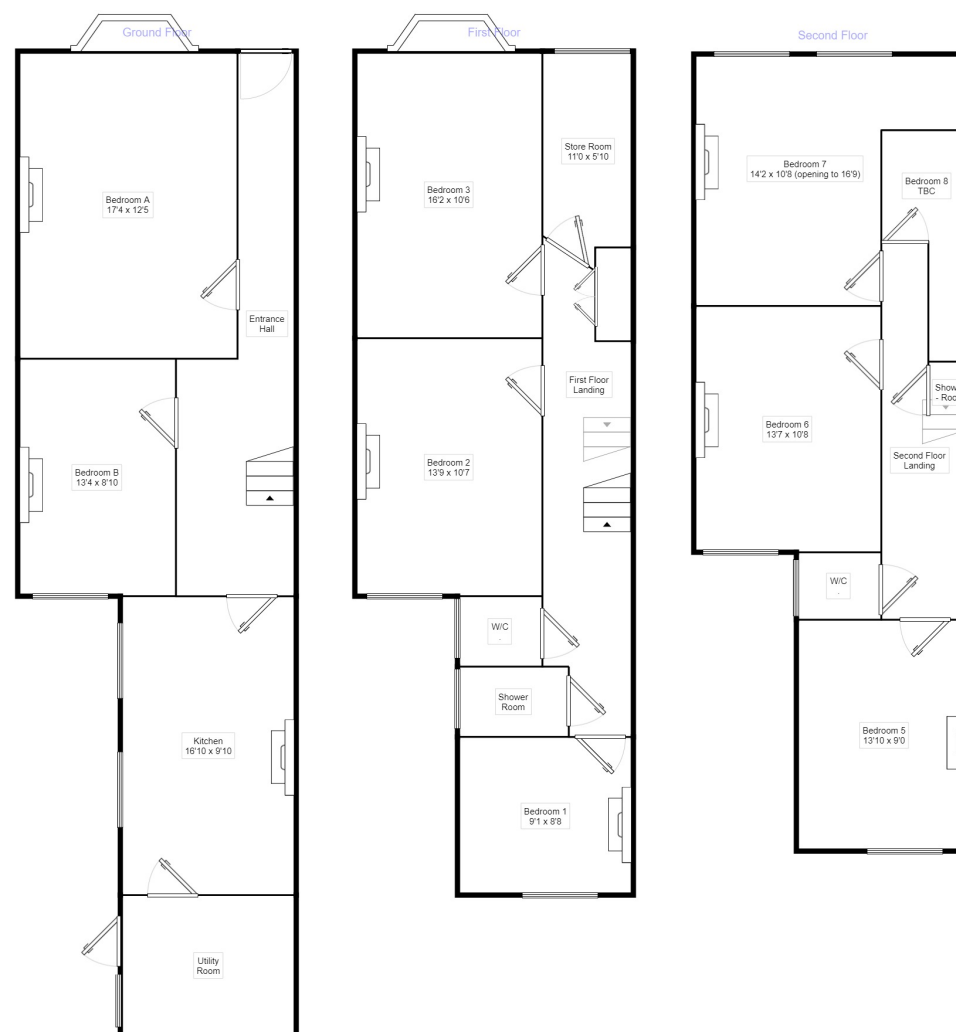
Don't delay with this opportunity, as they don't happen everyday.

### Location

Situated in Eastbourne's town centre, with it's mainline railway station and it's connection to London Victoria, Brighton and Hastings. The seafront is a stone's throw from the property which proves popular with tourists particularly in the summer months. The town centre is currently in the final stages of a major regeneration and is starting to look like quite the modern, British tourist attraction.



**9 Bedroom HMO**  
**For full EPC please contact the branch**



Measurements are approximate. Not to scale. For illustrative purposes only.

IMPORTANT NOTE TO PURCHASERS: We endeavour to make our sales particulars accurate and reliable, however, they do not constitute or form part of an offer or any contract and none is to be relied upon as statements of representation or fact. The services, systems and appliances listed in this specification have not been tested by us and no guarantee as to their operating ability or efficiency is given. All measurements have been taken as guide to prospective buyers only, and are not precise. Floor plans where included are not to scale and accuracy is not guaranteed. If you require clarification or further information on any points, please contact us, especially if you are travelling some distance to view. Fixtures and fittings other than those mentioned are to be agreed with the seller.

The Your Move branch is operated by National Home Move Limited which is independently owned and operated under a licence from your-move.co.uk Limited. National Home Move Limited is registered in England and Wales with company number 11805074, registered office: 5 Brooklands Place, Brookland Road, Sale, United Kingdom, M33 3SD. VAT Reg No: 315255523.

\*Calls may be recorded and/or monitored for training and/or security purposes.

40 Beatty Road, Eastbourne, East Sussex, BN23  
6DG

01323 727778 \* [eastbourne@your-move.co.uk](mailto:eastbourne@your-move.co.uk)

