



Oaklands, Westham, Pevensey, East Sussex **Offers in the region of £390,000**







Oaklands, Westham,
Pevensey, East Sussex

**Offers in the region of
£390,000**



3/4 Bedrooms

For full EPC please contact the branch

Property Description

Set in a gorgeous Village location on the outskirts of Westham, Pevensey this fantastic detached family home is available for sale with no onward chain! This brilliantly presented house features some incredible views over the countryside and benefits from a modern kitchen, modern shower room and ground floor cloakroom. The accommodation briefly comprises; entrance hall, spacious living/dining room, conservatory, modern fitted kitchen, ground floor bedroom currently arranged as well appointed office, and a ground floor cloakroom. Upstairs are three well proportioned bedrooms and a modern shower room. Outside you will find off street parking and a garden to the front, the rear garden features a decked area with complete privacy to the rear. EPC Grade - D

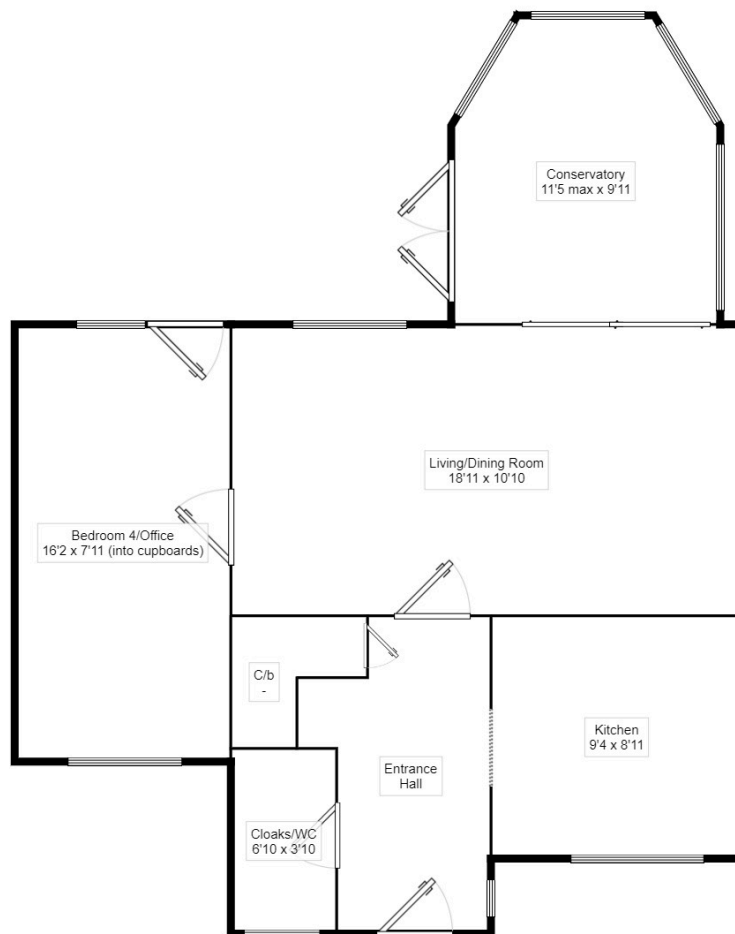
Our View

The views from this awesome house are something to be appreciated in person, and enjoyed by its next owner for years to come.

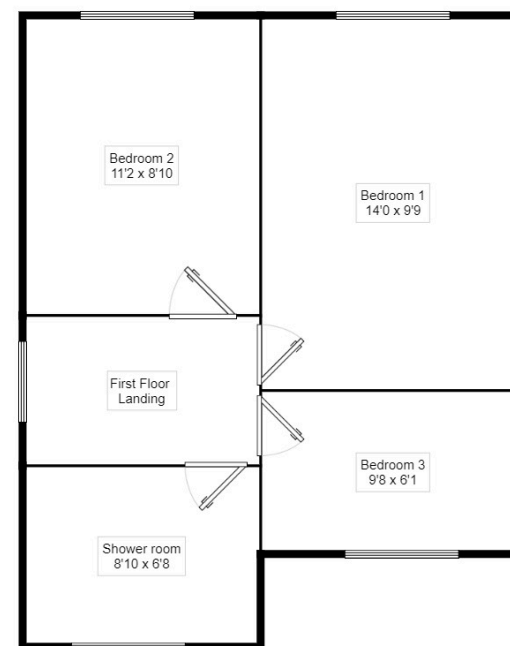
Location

Located close to the in the historical village of Pevensey, Oaklands is conveniently located within walking distance of Westham High Street with its local village store/Post office, while there are more shopping facilities/restaurants at the village of Pevensey Bay. Eastbourne town centre with the Beacon Shopping Centre, theatres and seafront is approx five miles distant. The mainline rail station at Westham is approx of a mile distant with links to London Victoria.

Ground Floor
Floor Size: 59.5 m², 640.0 ft²



First Floor
Floor Size: 37.6 m², 404.8 ft²



Measurements are approximate. Not to scale. For illustrative purposes only.

IMPORTANT NOTE TO PURCHASERS: We endeavour to make our sales particulars accurate and reliable, however, they do not constitute or form part of an offer or any contract and none is to be relied upon as statements of representation or fact. The services, systems and appliances listed in this specification have not been tested by us and no guarantee as to their operating ability or efficiency is given. All measurements have been taken as guide to prospective buyers only, and are not precise. Floor plans where included are not to scale and accuracy is not guaranteed. If you require clarification or further information on any points, please contact us, especially if you are travelling some distance to view. Fixtures and fittings other than those mentioned are to be agreed with the seller.

The Your Move branch is operated by National Home Move Limited which is independently owned and operated under a licence from your-move.co.uk Limited. National Home Move Limited is registered in England and Wales with company number 11805074, registered office: 5 Brooklands Place, Brookland Road, Sale, United Kingdom, M33 3SD. VAT Reg No: 31525523.

*Calls may be recorded and/or monitored for training and/or security purposes.

40 Beatty Road, Eastbourne, East Sussex, BN23
6DG

01323 727778 * eastbourne@your-move.co.uk

